



Proudly Manufactured in the USA

This feeder can either be mounted to a standard "T" type steel fence post or tree.

WARNING! Contacting buried utilities may result in serious injury or death! Before digging always contact your local One-Call system to prevent personal injury, interruption of services, environmental accidents or job delays. Electrical lines can shock or electrocute. Gas lines can rupture causing explosion or fire. Laser light in fiber optic cable can cause blindness. One-Call will notify participating utility companies of your proposed project. If you do not know the number for the local One-Call, call the National One-Call at 1-888-258-0808 for this information.

T-Post Mounting:

Mounting to a T-Post far enough away from a tree where squirrels cannot jump on it will result in less problems with varmints.

- We recommend mounting to a 7' heavy duty T-Post.
- Drive the T-Post with Stubs or nubs pointing away from the direction you would like the feeding tube to point.
- Drive the post until the top of post is at the desired height
 - Feeding Tube 42" ground = 5'4" to top of post from ground (will feed mature bucks and does)
 - Feeding Tube 38" ground = 5' to top of post from ground
 - Feeding Tube 34" ground = 4'8" to top of post from ground
- Next review Varmint Deterrent options on attached pages.
- Slide feeder over t-post until it seats on top of t-post then tighten bolts. (**do not overtighten**)

Tree Mounting:

- (2) Ratcheting straps are required for installation (not included). Length of required ratchet straps will depend on diameter of selected tree.
- (2) People will make mounting to tree easier.
- Hold empty feeder at desired height and attach ratchet strap around tree and feeder.
- Tighten ratchet strap. CAUTION: Do Not Over-Tighten the Strap. Over tightening of the ratchet strap can distort the feeder.

Baffle Installation:

- There is a flow control baffle that can be adjusted for flow of feed. Loosen wing nut to adjust height of baffle then re-tighten when done.

Installation is now complete and ready for use.

For installation help or questions, please call 877-523-9986. Thank you for purchasing a Redneck Outdoor Products, LLC – Made in the USA – product.

VARMINT DETERRENT



T-POST
FEEDER

Mounting the Feeder on a t-post has typically less varmint problems than mounting to a tree.



5 GALLON
BUCKET

Remove bucket handle and cut-off the top of the bucket, making sure to remove anything a raccoon might grab and use to hold-on to. Next, drill a hole in the bottom of the bucket just large enough for it to slide over the fence t-post. Place the 5 Gallon Bucket on top of the PVC Pipe.



PVC
PIPE

Cut a piece of PVC Pipe to approximately 40 inches in length, and place over the fence t-post. You want the PVC Pipe to be loose fitting and have the ability to spin when a raccoon grabs it.



FENCE
T-POST

We suggest using a 7 foot heavy duty t-post and drive it into the ground so that the bottom of the feeding tube on your feeder will be about 42 inches off the ground.

While no feeder is 100% Varmint Proof, we have found this solution works best for any nuisance varmint you may have. It prevents a majority of raccoons from reaching the feed, while still allowing deer access.

This is not a guaranteed solution to any varmint problems you may be having, and there are other alternatives that can be researched on the internet.

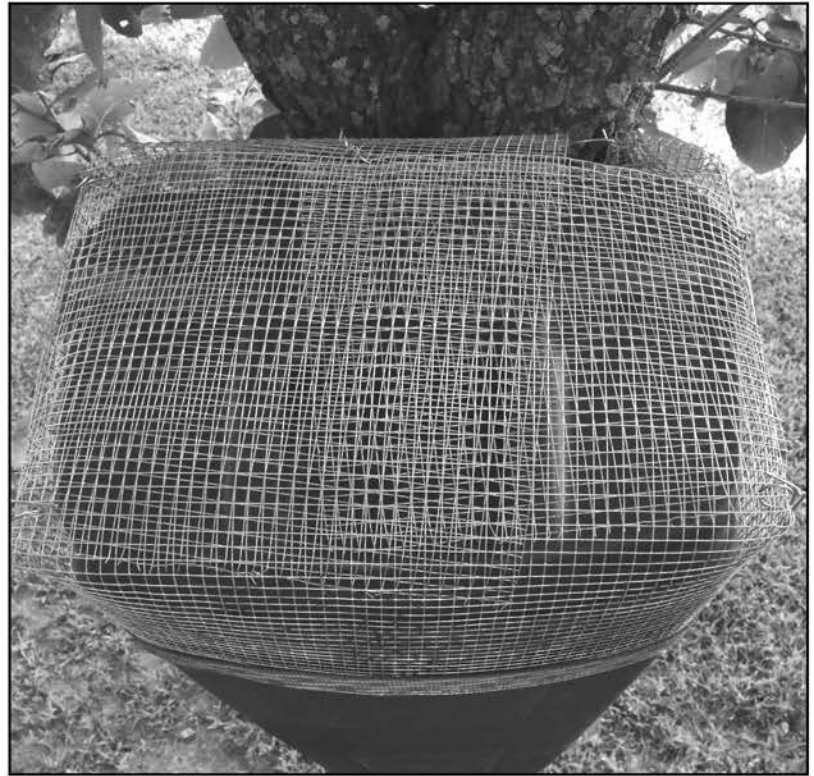


877. 523. 9986

www.RedneckBlinds.com

SQUIRREL WIRE CAGE DETERRENT

To prevent nuisance squirrels from chewing through the lid of your Redneck T-Post feeder, we suggest placing a wire cage over the top of your feeder. During the “off-season” when your feeder is not in use and void of feed, squirrels may begin chewing at the top of your feeder in order to get at the feed that they believe is still inside. We feel that removing your feeder and storing it in a secure location is the best option when not in use, but we realize this is not always possible. In these cases, we have found this wire cage to be the best option. This is not a guaranteed solution to any squirrel problems you may be having and there are other alternatives which can be researched on the internet.



The Squirrel Wire Cage can be constructed with a small gauge wire mesh cut into the shape of your T-Post Feeder and tied together with wire.

