

# VARMINT DETERRENT



T-POST  
FEEDER



5 GALLON  
BUCKET



PVC  
PIPE



FENCE  
T-POST

Mounting the Feeder on a t-post has typically less varmint problems than mounting to a tree.

Remove bucket handle and cut-off the top of the bucket, making sure to remove anything a raccoon might grab and use to hold-on to. Next, drill a hole in the bottom of the bucket just large enough for it to slide over the fence t-post. Place the 5 Gallon Bucket on top of the PVC Pipe.

Cut a piece of PVC Pipe to approximately 40 inches in length, and place over the fence t-post. You want the PVC Pipe to be loose fitting and have the ability to spin when a raccoon grabs it.

We suggest using a 7 foot heavy duty t-post and drive it into the ground so that the bottom of the feeding tube on your feeder will be about 42 inches off the ground.

While no feeder is 100% Varmint Proof, we have found this solution works best for any nuisance varmint you may have. It prevents a majority of raccoons from reaching the feed, while still allowing deer access.

This is not a guaranteed solution to any varmint problems you may be having, and there are other alternatives that can be researched on the internet.

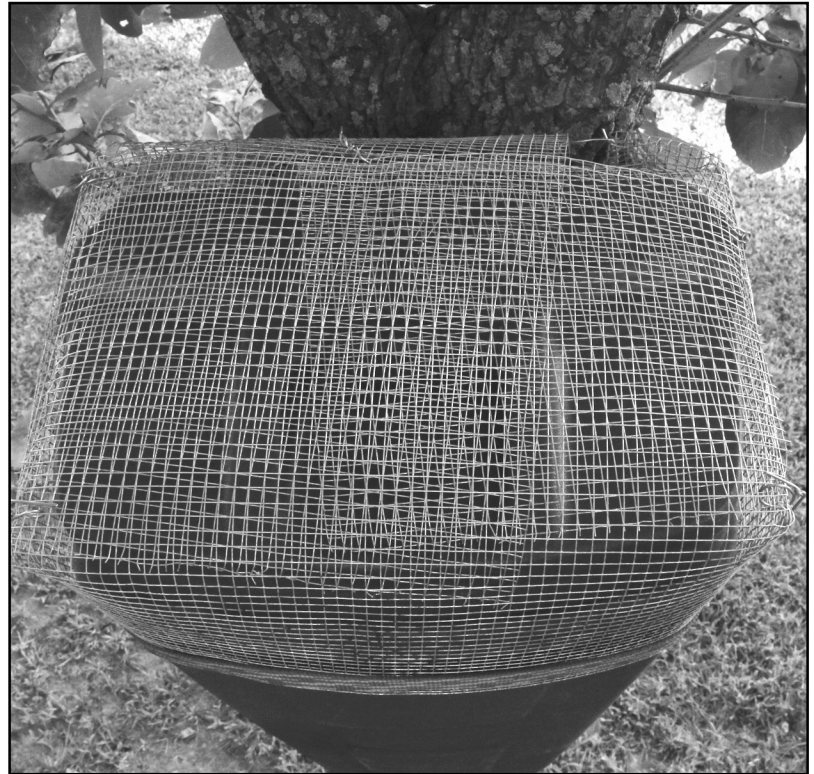


877. 523. 9986

[www.RedneckBlinds.com](http://www.RedneckBlinds.com)

# SQUIRREL WIRE CAGE DETERRENT

To prevent nuisance squirrels from chewing through the lid of your Redneck T-Post feeder, we suggest placing a wire cage over the top of your feeder. During the "off-season" when your feeder is not in use and void of feed, squirrels may begin chewing at the top of your feeder in order to get at the feed that they believe is still inside. We feel that removing your feeder and storing it in a secure location is the best option when not in use, but we realize this is not always possible. In these cases, we have found this wire cage to be the best option. This is not a guaranteed solution to any squirrel problems you may be having and there are other alternatives which can be researched on the internet.



The Squirrel Wire Cage can be constructed with a small gauge wire mesh cut into the shape of your T-Post Feeder and tied together with wire.



877. 523. 9986  
[www.RedneckBlinds.com](http://www.RedneckBlinds.com)