



REPLACEMENT 15FT LADDER INSTRUCTIONS

STEP 1: Remove all parts from the packaging and familiarize yourself with all the parts and tools required. Find the Bill of Materials on the back of this page and verify that all parts and hardware are present. You will need (2) wrenches that are 9/16" in size for assembly of this product.

NOTE: The typical hardware connection will use (1) 3/8" X 1-1/4" hex bolt, (2) flat washers, (1) lock washer, and (1) 3/8" hex nut. Refer to Figure 11.1 for proper assembly.

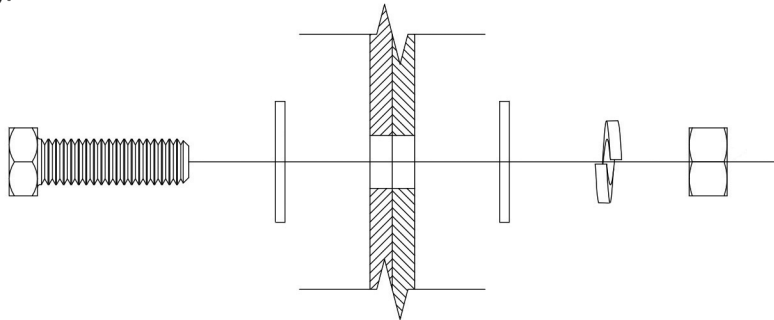


Figure 11.1

STEP 2: Assemble ladder as shown in Figure 12.1. Use (13) 3/8" x 1" Ribbed Neck Bolts to attach the Ladder Sections to the Ladder Splices and secure them with (13) flat washers, (13) lock washers, and (13) 3/8" hex nuts. Install 3/8" x 1" Ribbed Neck Bolts with the head on the outside of the ladder. Attach both Ladder Hand Rails to the Ladder Sections as shown using (4) 3/8" x 2" hex bolts, (8) flat washers, (4) lock washers, and (4) 3/8" hex nuts. Install the Ladder Feet and the Ladder Connectors using the typical hardware connection in (5) places.

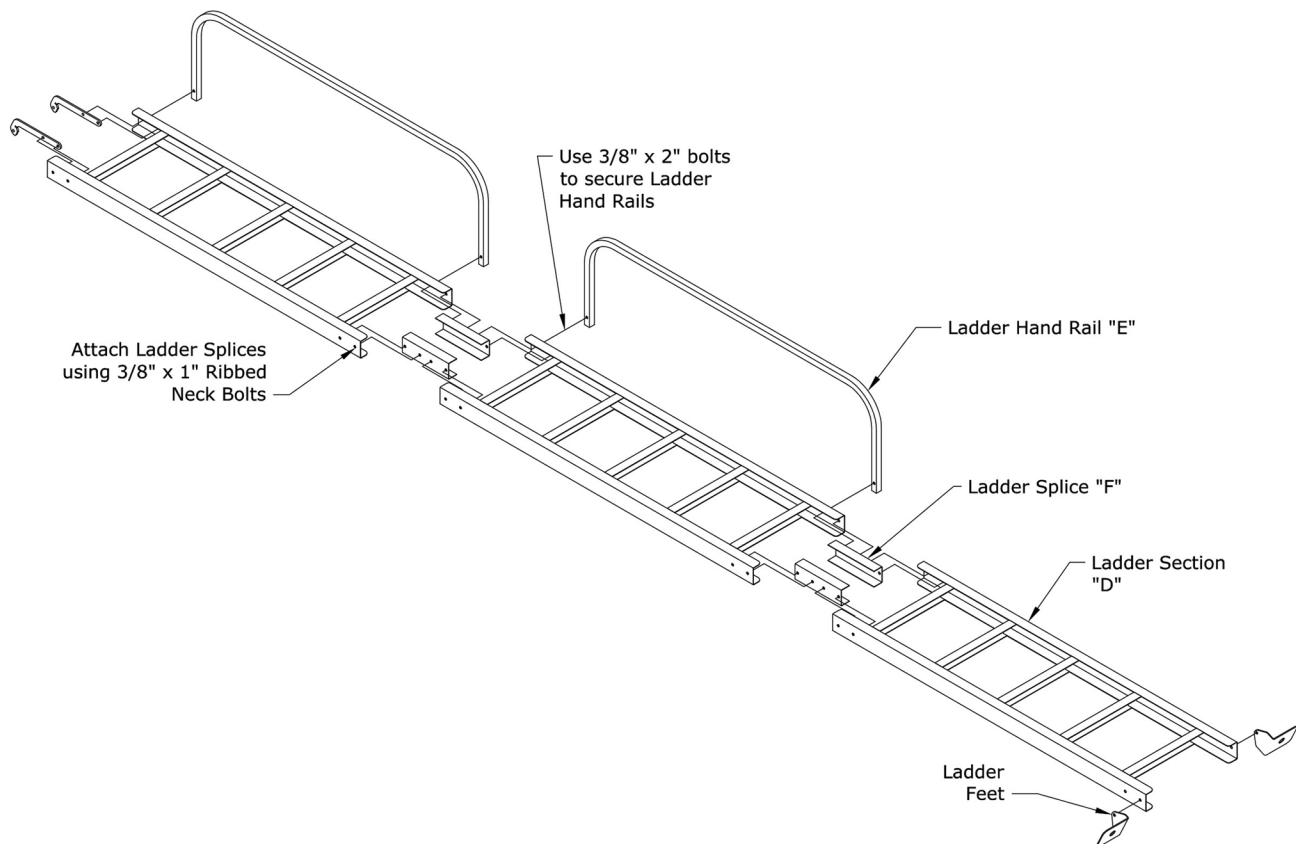
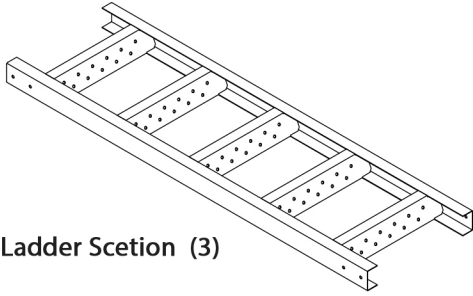
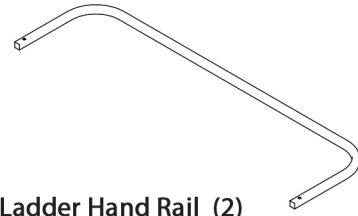


Figure 12.1

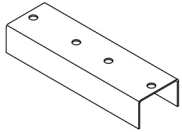
BILL OF MATERIALS



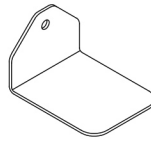
"D" Ladder Section (3)



"E" Ladder Hand Rail (2)



"F" Ladder Splice (4)



"J" Ladder Foot (2)



"K" Ladder Connector (2)

Quantity

Description

15	* 3/8" X 1" Ribbed Neck Bolt
6	* 3/8" X 1-1/4" Hex Bolt
4	* 3/8" X 2" Hex Bolt
26	* 3/8" Hex Nut
52	* 3/8" Flat Washer
26	* 3/8" Lock Washer

Tools Required

9/16" Ratchet & Socket
9/16" Wrench