



REPLACEMENT 10FT LADDER INSTRUCTIONS

STEP 1: Remove all parts from the packaging and familiarize yourself with all the parts and tools required. Find the Bill of Materials on the back of this page and verify that all parts and hardware are present. You will need (2) wrenches that are 9/16" in size for assembly of this product.

NOTE: The typical hardware connection will use (1) 3/8" X 1-1/4" hex bolt, (2) flat washers, (1) lock washer, and (1) 3/8" hex nut. Refer to Figure 11.1 for proper assembly.

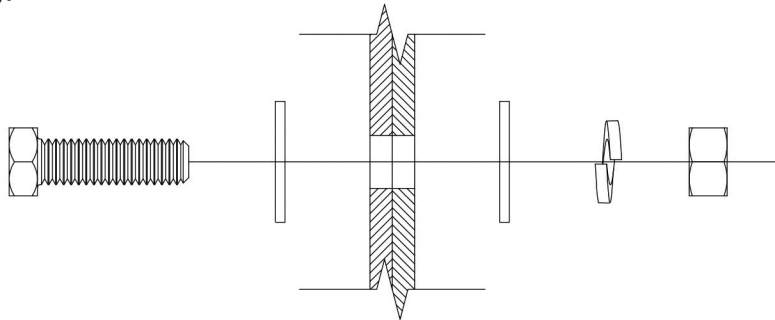


Figure 11.1

STEP 2: Assemble ladder parts G,I,J,K, and L using the typical hardware connection in (12) places. Use (2) 3/8" X 2" hex bolts, (4) flat washers, (2) lock washers, and (2) 3/8" hex nuts to attach the ladder hand rail "L" to the ladder. Refer to Figure 12.1 for proper assembly.

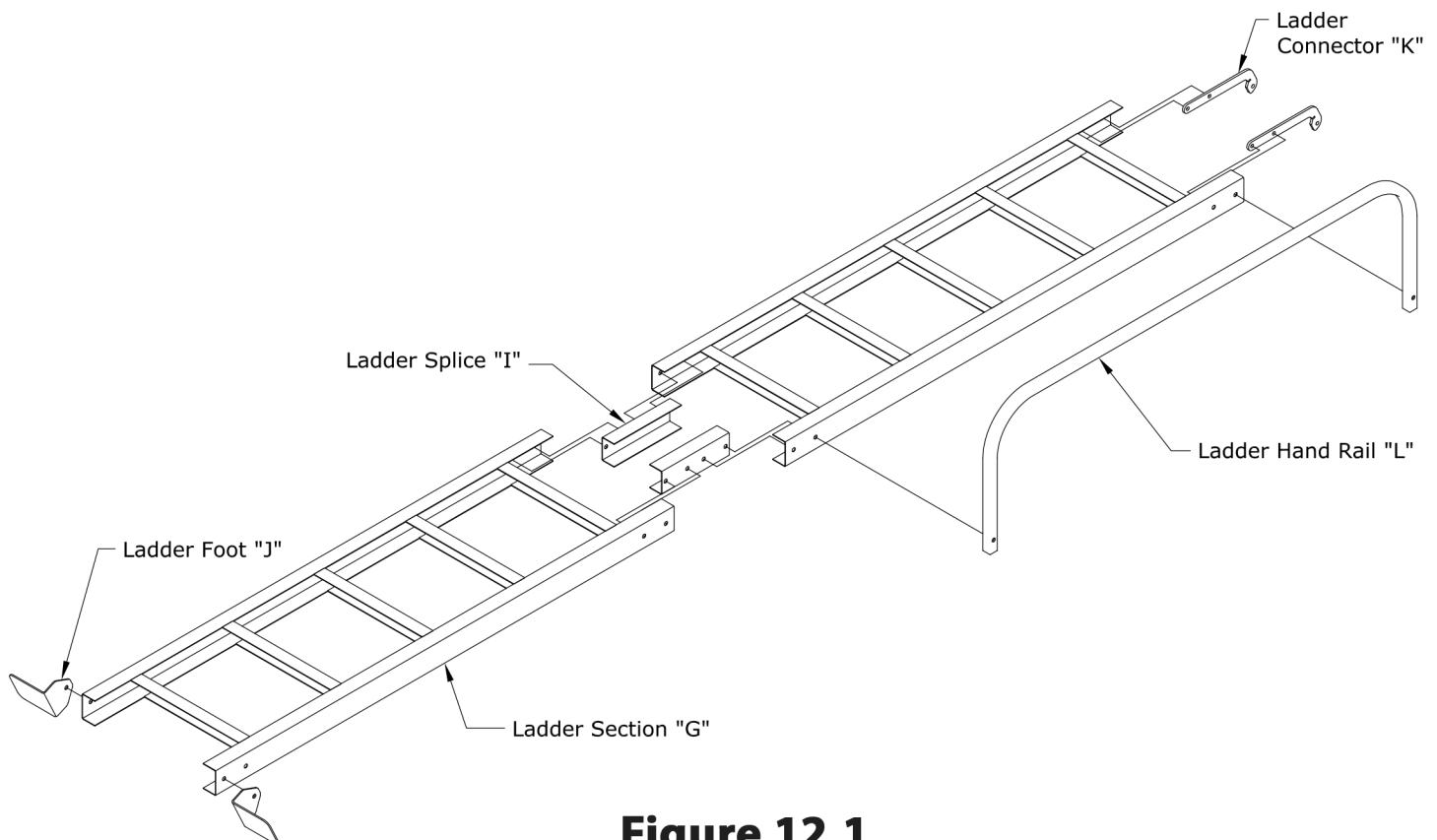
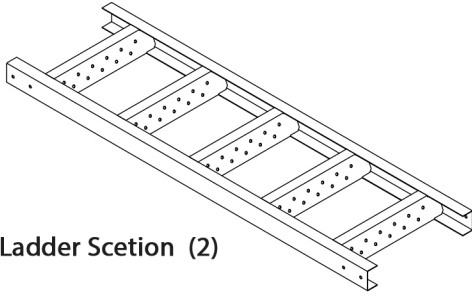
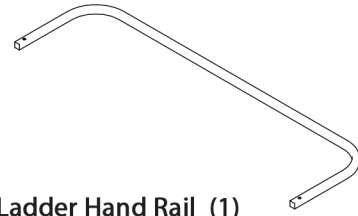


Figure 12.1

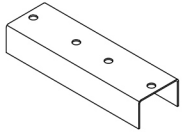
BILL OF MATERIALS



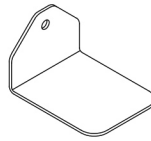
"G" Ladder Section (2)



"L" Ladder Hand Rail (1)



"I" Ladder Splice (2)



"J" Ladder Foot (2)



"K" Ladder Connector (2)

Quantity

Description

14	* 3/8" X 1-1/4" Hex Bolt
2	* 3/8" X 2" Hex Bolt
18	* 3/8" Hex Nut
32	* 3/8" Flat Washer
18	* 3/8" Lock Washer

Tools Required

9/16" Ratchet & Socket
9/16" Wrench