



# **RD-PLSTAIR-10**

## **REDNECK DELUXE 10FT STAIRWAY ASSEMBLY INSTRUCTIONS**

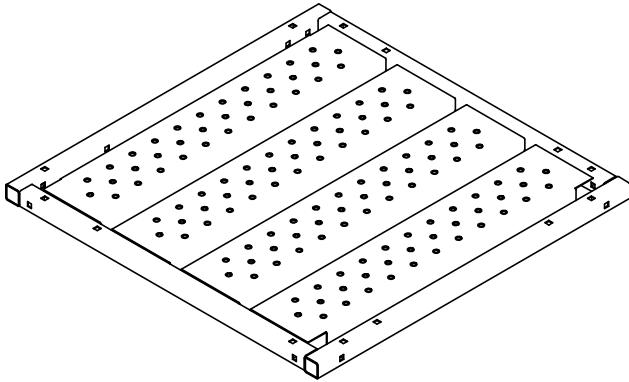
READ THESE INSTRUCTIONS IN THEIR ENTIRETY PRIOR TO ASSEMBLING THIS PRODUCT

**WARNING!** Do not remove, modify and/or omit any portion or otherwise mechanically modify this product(s) or its assemblies in any manner. Modification, misuse and/or part substitution shall immediately void your factory warranty. If you suspect that a part(s) is missing and/or defective, immediately discontinue all use of the product and contact Redneck Outdoor Products at 877-523-9986 for replacement of missing or defective parts.

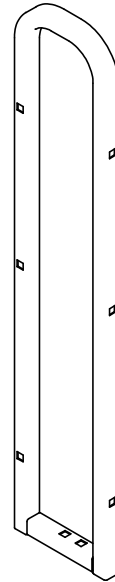
**NOTE:** Some parts of this product are manufactured to be universal in use, so there may be some parts containing holes that will not be used in the assembly of this particular model. To minimize confusion in the assembly process, please read these instructions in their entirety before beginning.

Should you have any questions about the assembly, installation or use of this product, or any other Redneck Outdoor Products, please call one of our customer service representatives toll free at 877-523-9986.

**FIGURE 1.1**  
**TURN STAND PARTS INVENTORY**



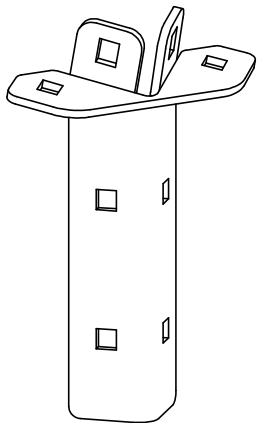
WELDED PLATFORM ASSEMBLY  
QTY 1



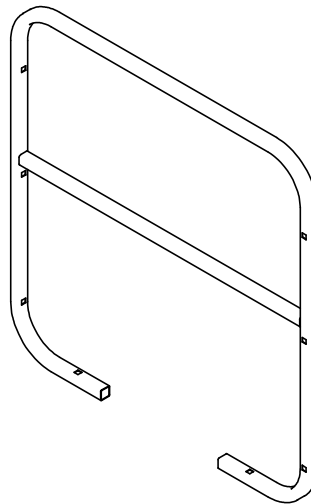
RIGHT CORNER HANDRAIL  
QTY 2



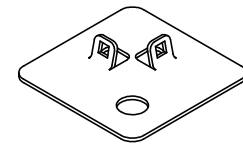
LEG  
QTY 4



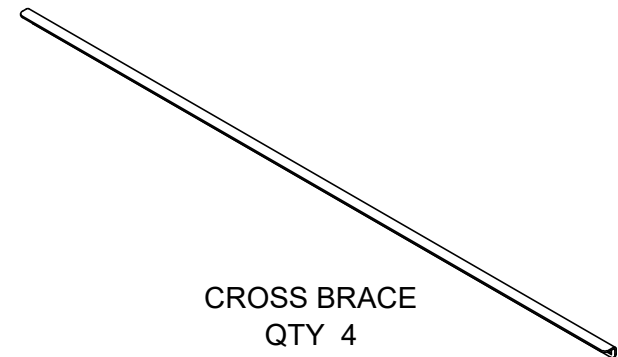
SMALL LEG STEM  
QTY 4



LEFT CORNER HANDRAIL  
QTY 2



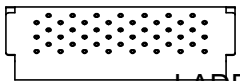
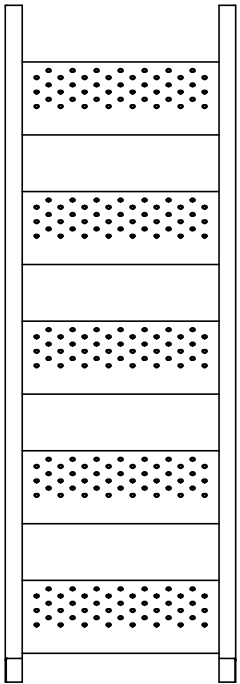
LEG FOOT  
QTY 4



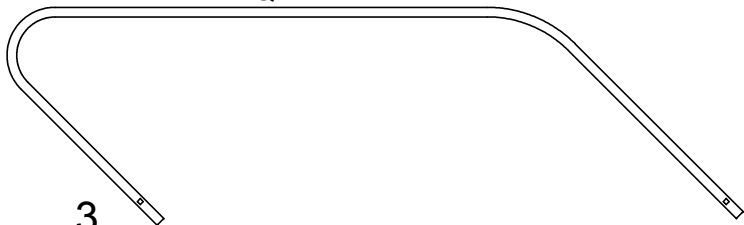
CROSS BRACE  
QTY 4

**FIGURE 1.2**  
LADDER PARTS INVENTORY

UPPER LADDER  
TREAD ASSY.  
QTY 1

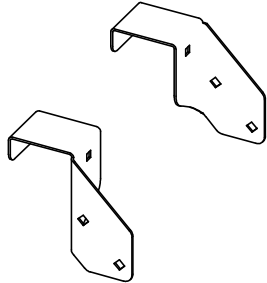


LADDER HAND RAIL  
QTY 2



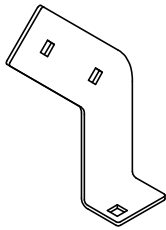
3

UPPER LADDER  
RIGHT ADAPTOR PLATE  
QTY 1

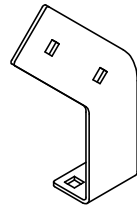


UPPER LADDER  
LEFT ADAPTOR PLATE  
QTY 1

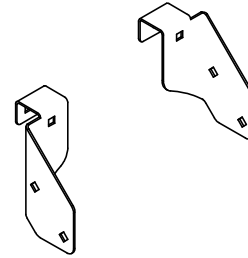
LANDING RIGHT  
CONNECTOR PLATE  
QTY 1



LANDING LEFT  
CONNECTOR PLATE  
QTY 1

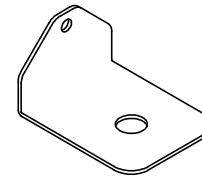


LOWER LADDER  
RIGHT ADAPTOR PLATE  
QTY 1



LOWER LADDER  
LEFT ADAPTOR PLATE  
QTY 1

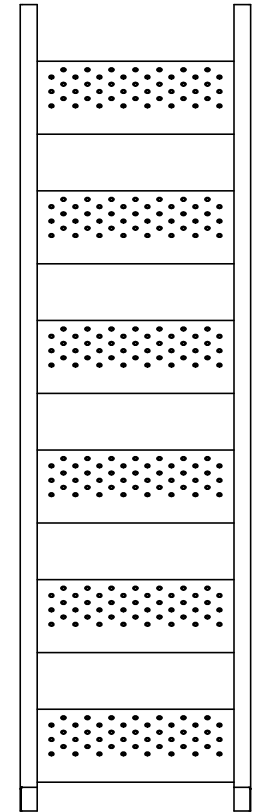
LADDER FOOT  
QTY 2



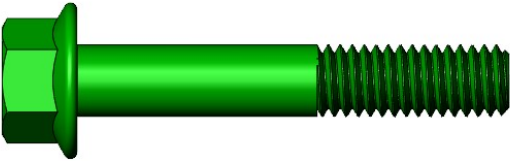
LADDER HAND RAIL  
QTY 2



LOWER LADDER  
TREAD ASSY  
QTY 1



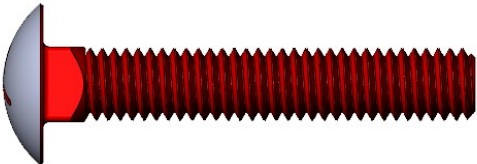
**FIGURE 1.3**  
HARDWARE INVENTORY  
ACTUAL SIZE



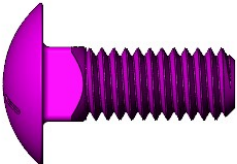
3/8" x 2 1/4" FLANGE BOLT  
QTY 2



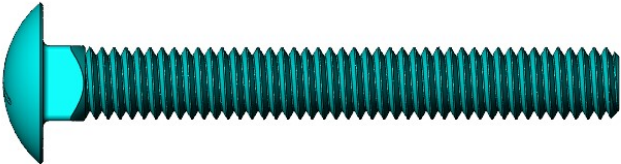
3/8" FLANGE NUT  
QTY 75



3/8" x 2 1/4" CARRIAGE BOLT  
QTY 19



3/8" x 1.00" CARRIAGE BOLT  
QTY 42



3/8" x 3.00" CARRIAGE BOLT  
QTY 12

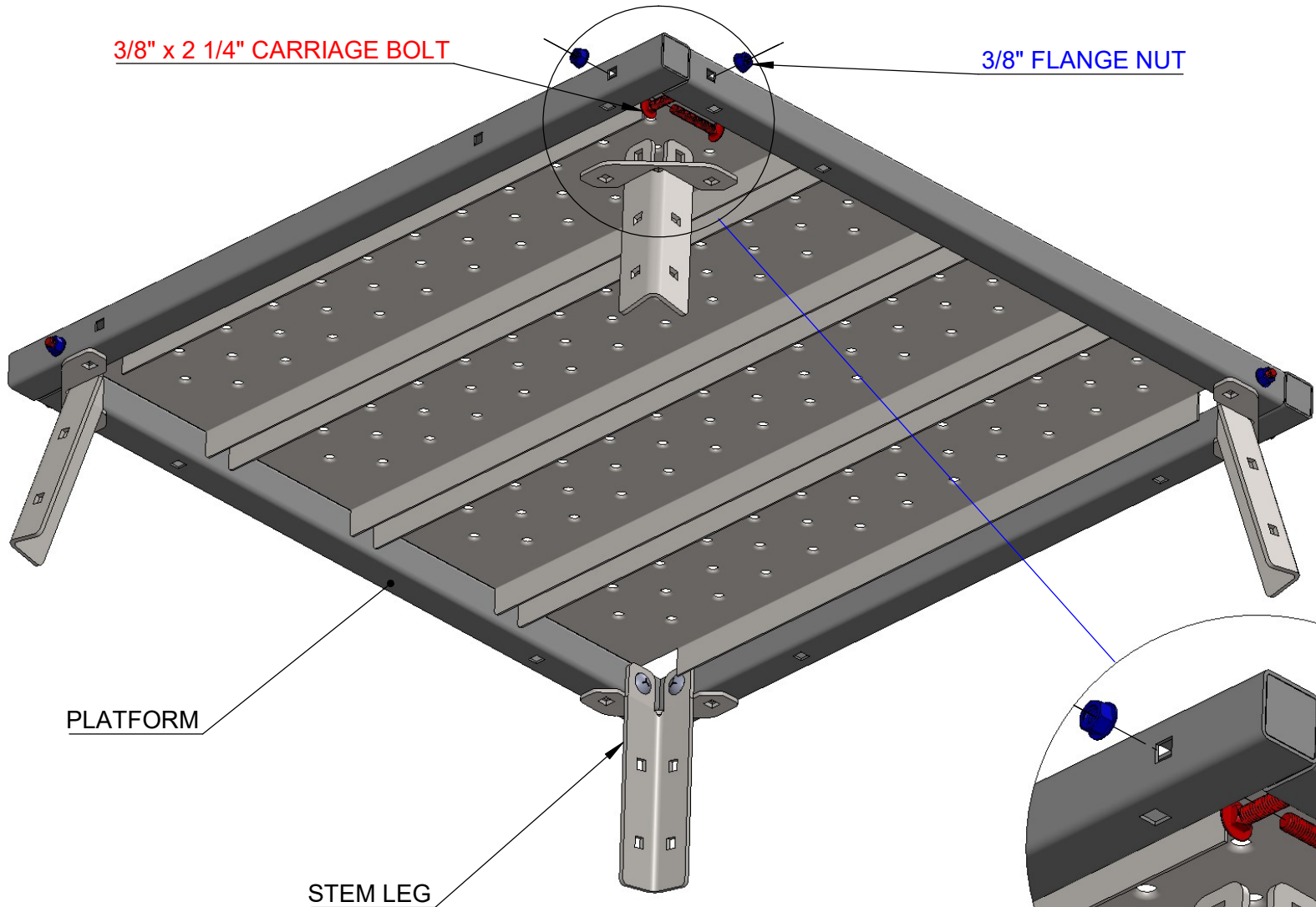


**PARTS & HARDWARE:**

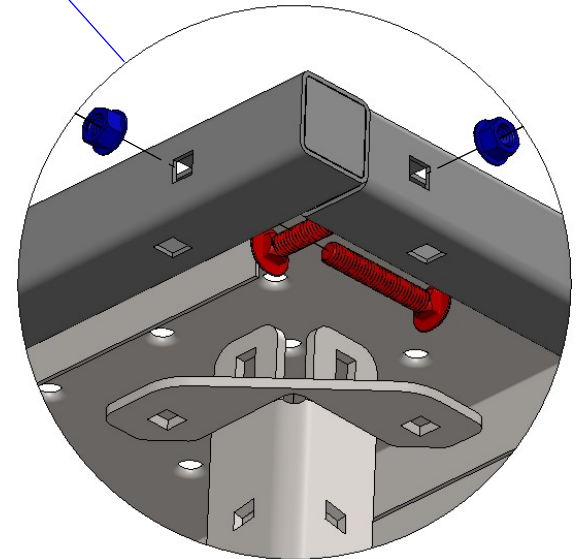
- 1 - PLATFORM
- 4 - STEM LEGS
- 8 - 3/8" x 2 1/4" CARRIAGE BOLTS
- 8 - 3/8" FLANGE NUT

**STEP 2: STEM LEGS AND PLATFORM**

ASSEMBLE STEM LEG AS SHOWN IN (FIGURE 2.2) REPEAT PROCESS FOR OTHER 3 STEM LEGS.



**FIGURE 2.1**



**FIGURE 2.2**

- PARTS & HARDWARE:**  
 2 - RIGHT CORNER HANDRAIL  
 5 - 3/8" x 3" CARRIAGE BOLTS  
 5 - 3/8" x 2 1/4" CARRIAGE BOLTS  
 10 - FLANGE NUTS

**STEP 3:**

ASSEMBLE RIGHT FRONT CORNER HANDRAILS + TOP BOLTS FOR STEM LEGS

RIGHT CORNER HANDRAIL

3/8" x 3.00" CARRIAGE BOLT

3/8" x 2 1/4" CARRIAGE BOLT

ORIENT PLATFORM AS SHOWN.

**NOTE:** THIS IS ONLY SIDE WITH 4 HOLES IN THE SIDE

3/8" FLANGE NUT

**NOTE:** DO NOT INSTALL THIS BOLT AS IT WILL BE DONE IN A LATER STEP

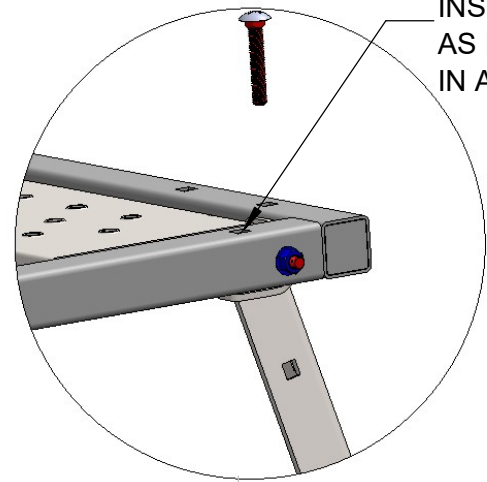


FIGURE 3.2

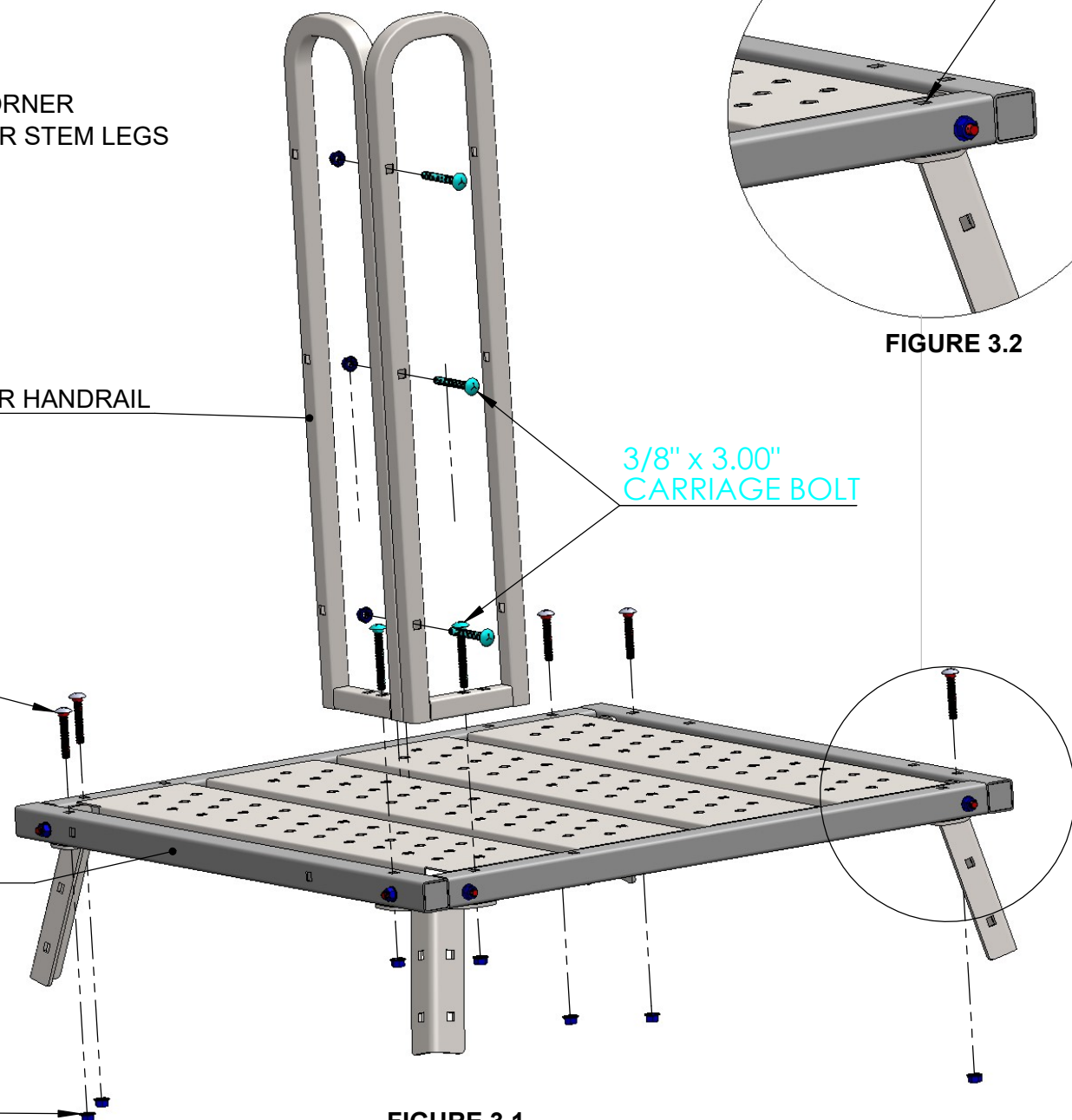


FIGURE 3.1

- PARTS & HARDWARE:**  
7 - 3/8" x 3" CARRIAGE BOLTS  
7 - 3/8" FLANGE NUTS  
2 - LEFT CORNER HANRAIL

**STEP 4:**  
ASSEMBLE LEFT CORNER  
HANDRAILS AS SHOWN

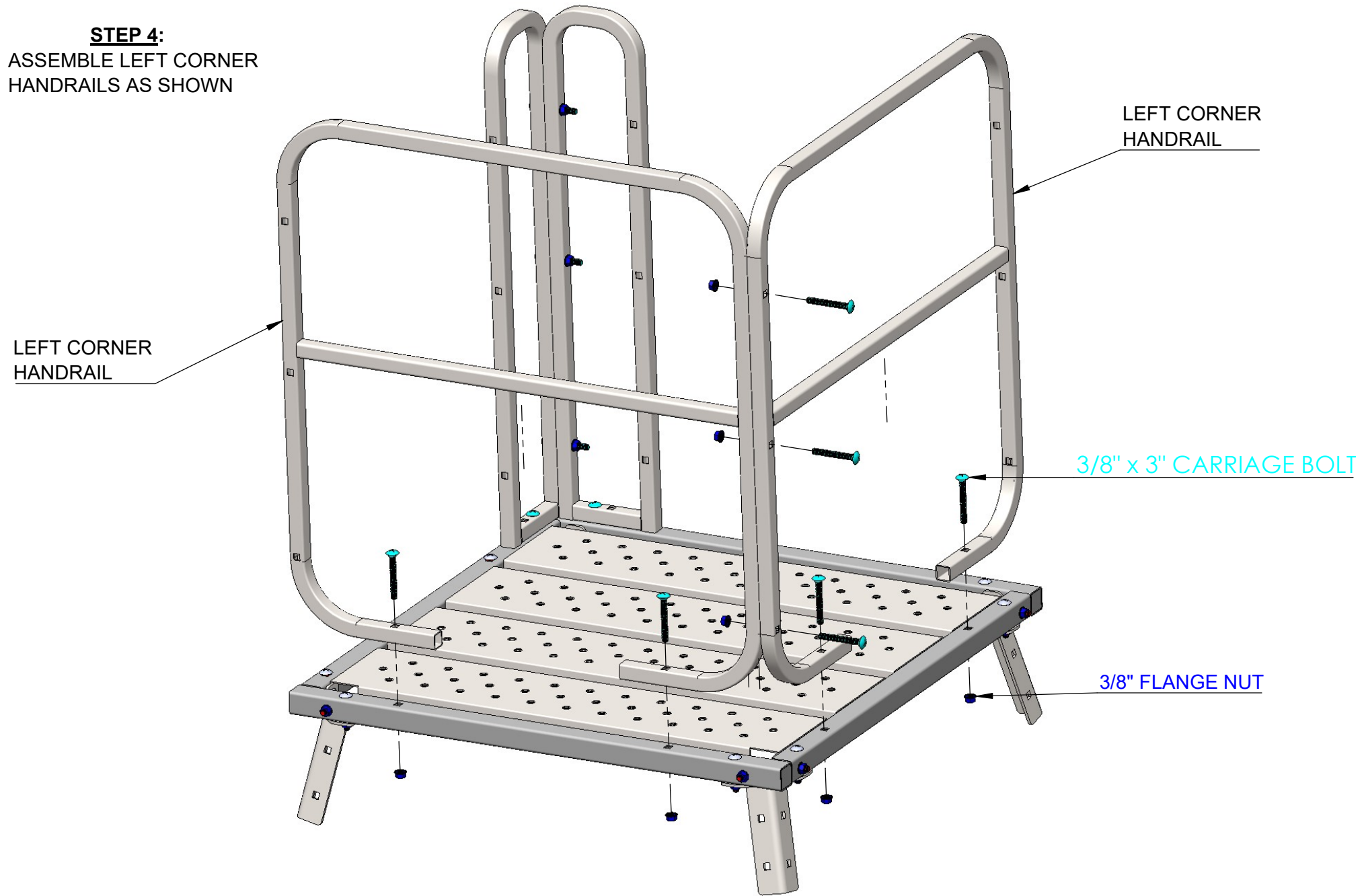


FIGURE 4.1

**PARTS & HARDWARE:**

24 - 3/8" x 1" CARRIAGE

24 - 3/8" FLANGE NUT

4 - LEGS

4 - FEET

**STEP 5: LEGS & FEET**

ASSEMBLE LEGS (FIGURE 5.2) AND FEET (FIGURE 5.3) AS SHOWN. REPEAT PROCESS FOR THE OTHER 3 LEGS AND FEET

**NOTE:** IN THIS STEP ALL CARRIAGE BOLTS ARE INSTALLED FROM THE INSIDE WITH THE THREADS FACING OUTWARD. THEREFORE THE FLANGE NUT IS ON THE OUTSIDE MAKING IT EASIER TO TIGHTEN WITH EITHER A DRIVE SOCKET OR A WRENCH.

3/8" x 1.00" CARRIAGE BOLT

3/8" FLANGE NUT

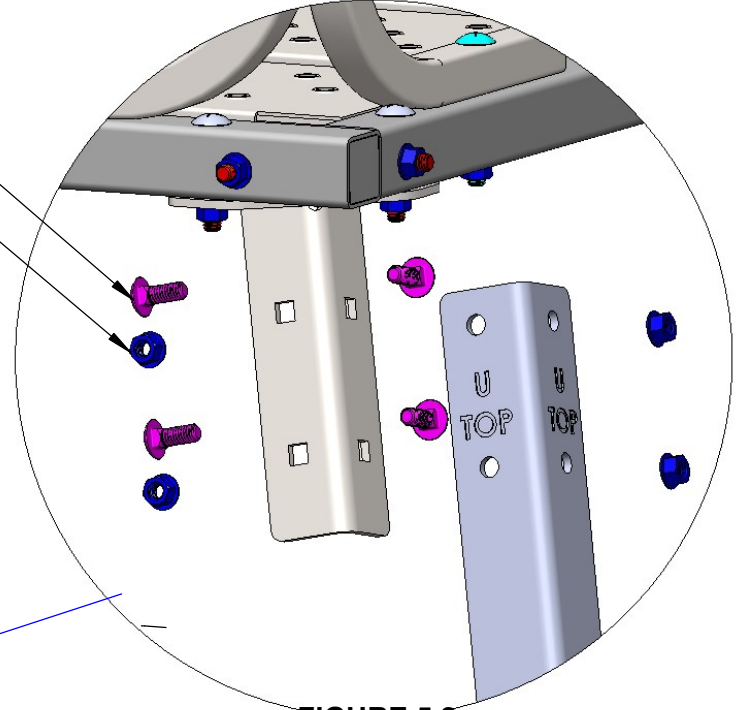
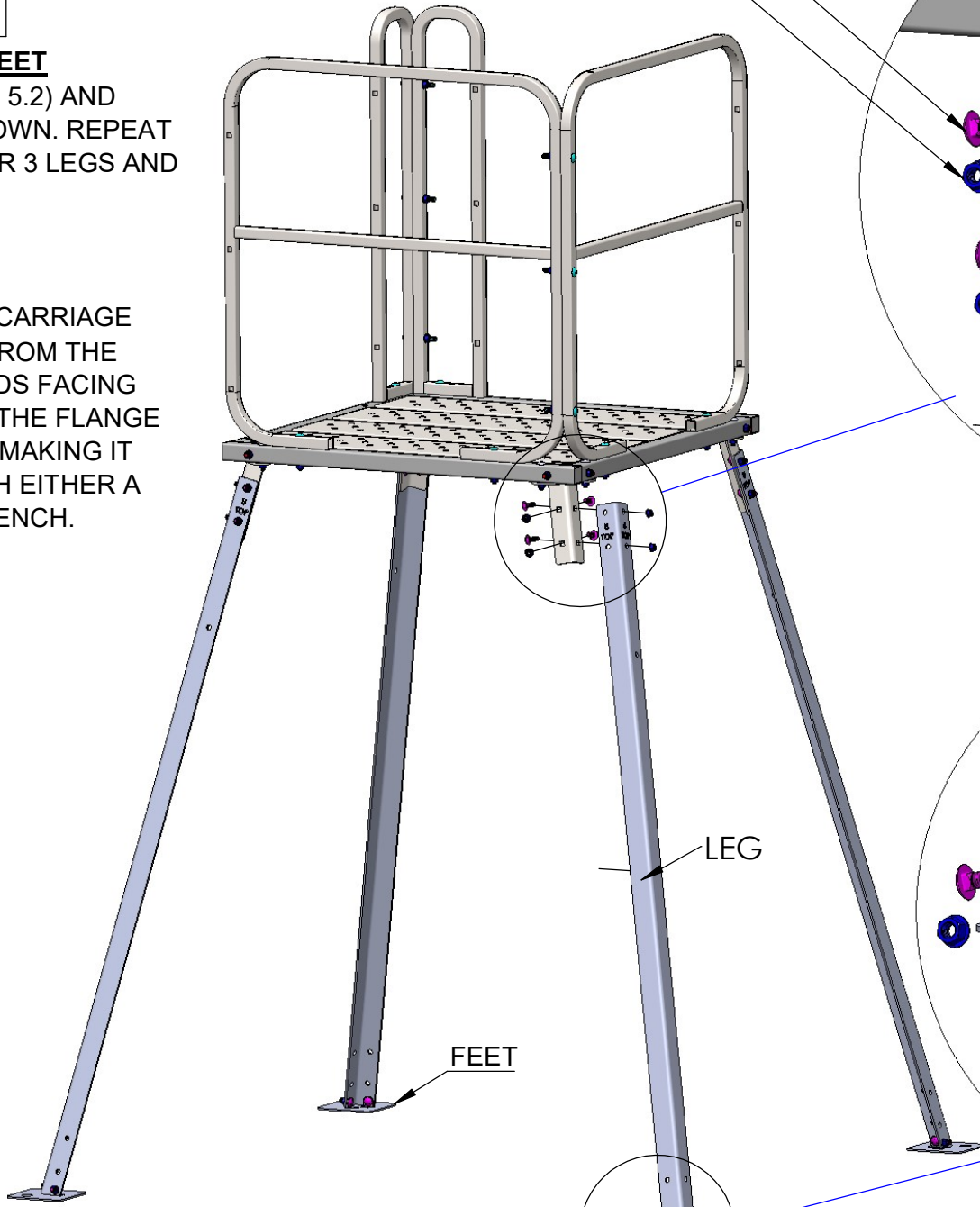


FIGURE 5.2

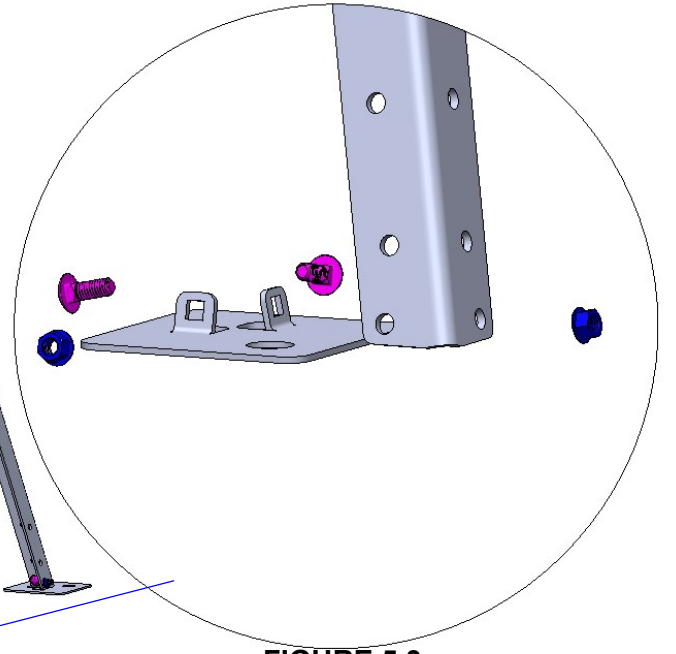


FIGURE 5.3

FIGURE 5.1

**PARTS & HARDWARE:**

8 **3/8" x 1.00" CARRIAGE BOLTS**

8 **3/8" FLANGE NUTS**

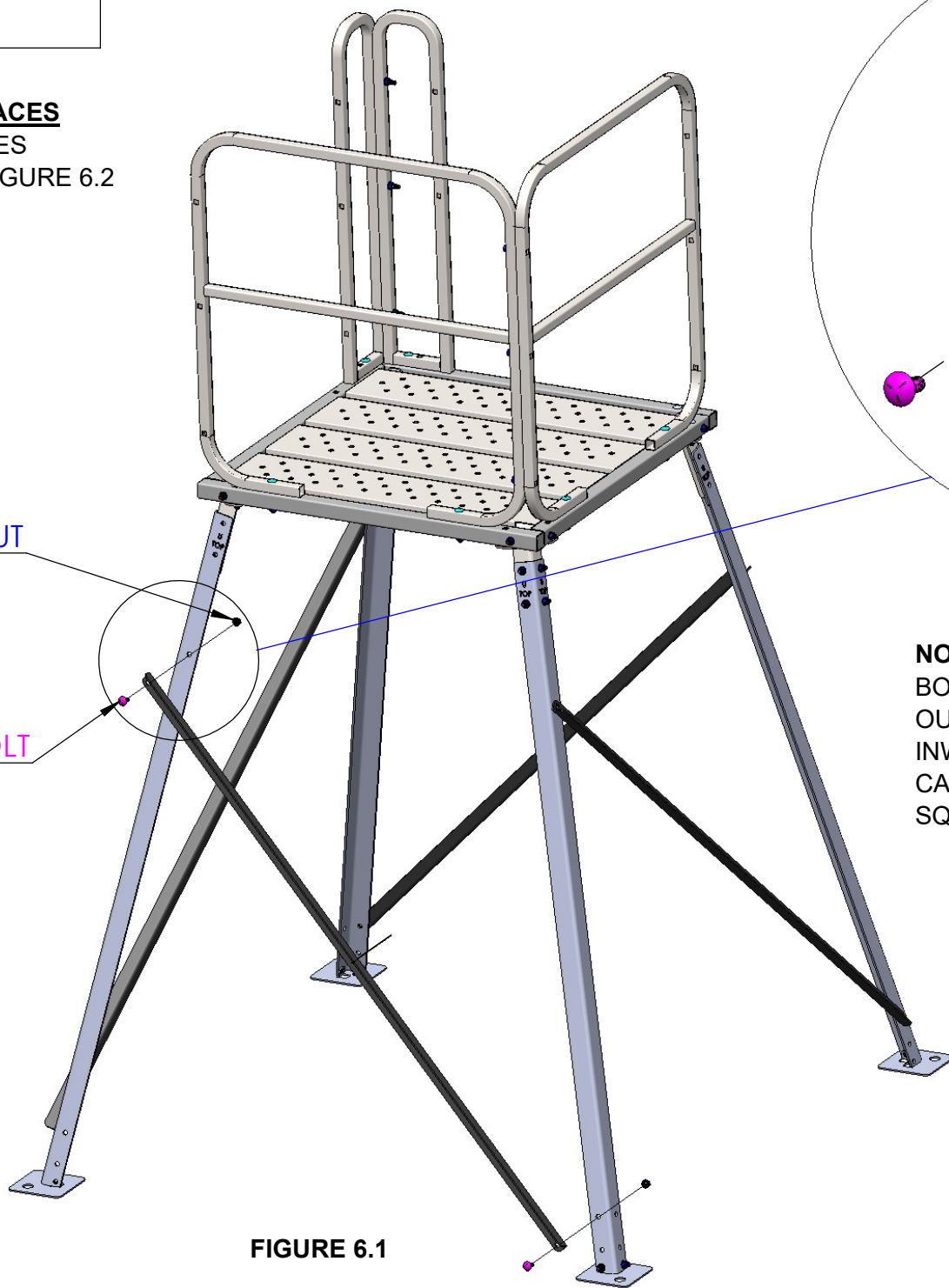
4 **CROSS BRACES**

**STEP 6: CROSS BRACES**

ASSEMBLE CROSS BRACES  
TO LEGS AS SHOWN IN FIGURE 6.2

3/8" FLANGE NUT

3/8" x 1.00" CARRIAGE BOLT



**FIGURE 6.2**

**NOTE:** IN THIS STEP ALL CARRIAGE BOLTS ARE INSTALLED FROM THE OUTSIDE WITH THE THREADS FACING INWARD. THIS IS TO INSURE THE CARRIAGE BOLT IS SEATED IN THE SQUARE HOLE IN THE CROSSBRACE.

**FIGURE 6.1**

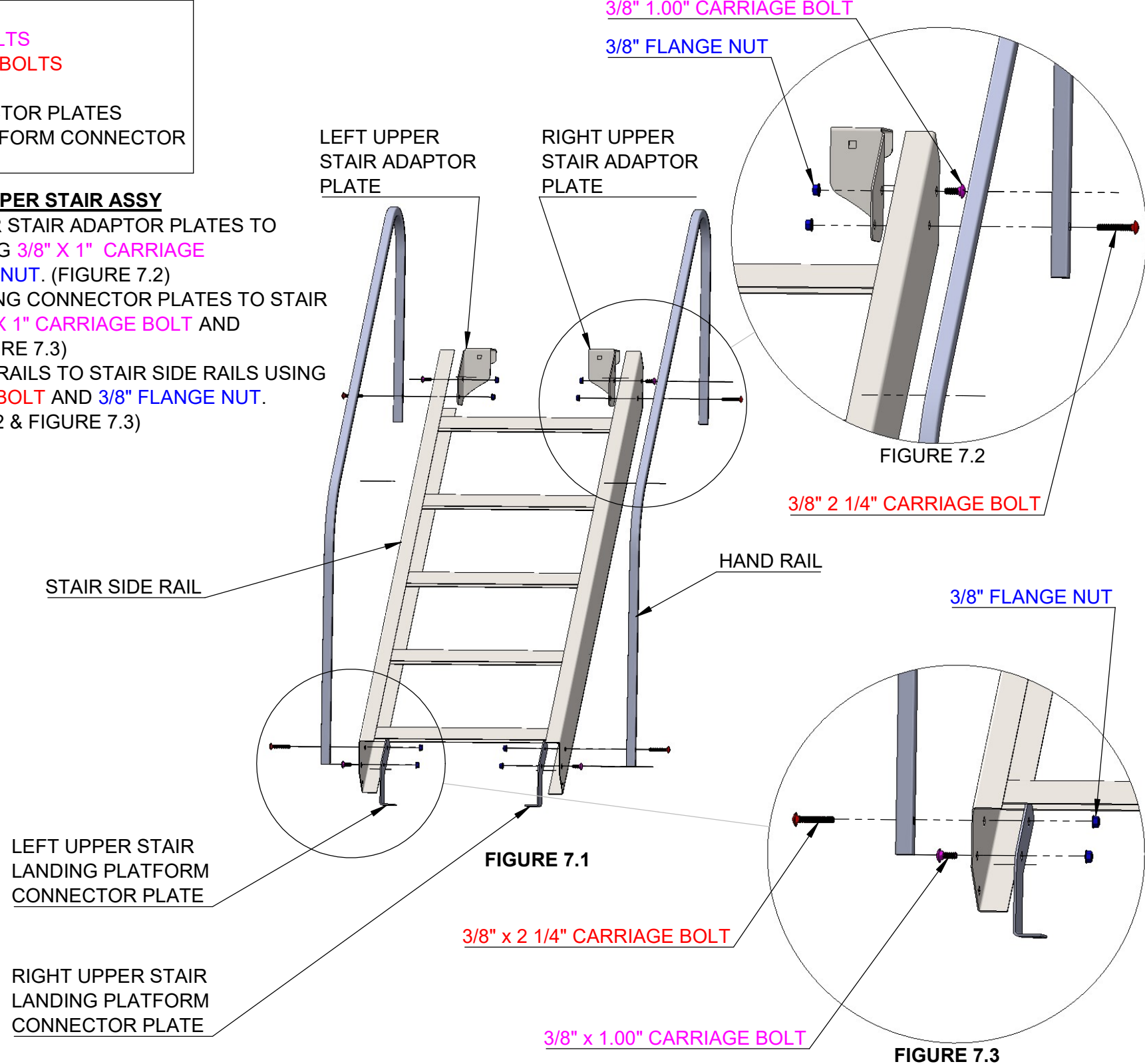


**PARTS & HARDWARE**

- 4 **3/8" x 1" CARRIAGE BOLTS**
- 4 **3/8" x 2 1/4" CARRIAGE BOLTS**
- 8 **3/8" FLANGE NUTS**
- 2 UPPER STAIR CONNECTOR PLATES
- 2 UPPER STAIR TO PLATFORM CONNECTOR
- 2 STAIR HAND RAILS

**STEP 7: UPPER STAIR ASSY**

- ASSEMBLE UPPER STAIR ADAPTOR PLATES TO STAIR SIDE RAILS USING **3/8" X 1" CARRIAGE BOLT** AND **3/8" FLANGE NUT**. (FIGURE 7.2)
- ASSEMBLE LANDING CONNECTOR PLATES TO STAIR SIDE RAILS USING **3/8" X 1" CARRIAGE BOLT** AND **3/8" FLANGE NUT**. (FIGURE 7.3)
- ASSEMBLE HAND RAILS TO STAIR SIDE RAILS USING **3/8" X 2 1/4" CARRIAGE BOLT** AND **3/8" FLANGE NUT**. SEE DETAIL (FIGURE 7.2 & FIGURE 7.3)



**PARTS**

- 1 10' STAND
- 1 TURN PLATFORM
- 1 UPPER STAIR

**STEP 8.1:**

- CONNECT 10ft STAND TO TURN PLATFORM WITH UPPER STAIR. YOU WILL NEED 3 PEOPLE AND TWO 10ft A-FRAME STYLE LADDERS. START BY PLACING THE TURN STAND APPROXIMATELY 54" TO NO MORE THAN 58" APART.

**NOTE:** ONCE CONNECTED THEY SHOULD END UP APPROXIMATELY 59" APART AS SHOWN IN FIGURE 8.1

- PROCEED TO FIGURE 8.2

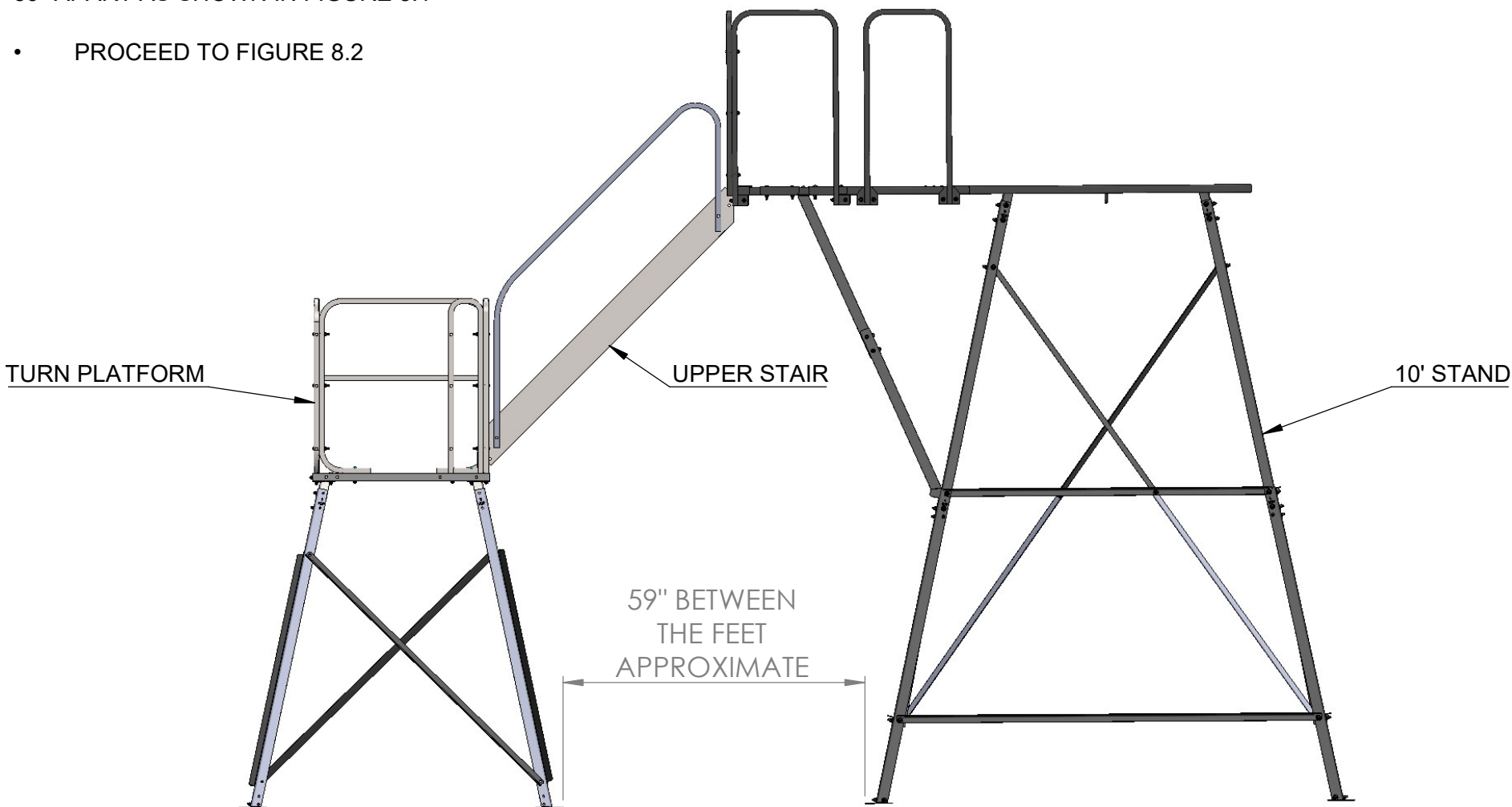


FIGURE 8.1

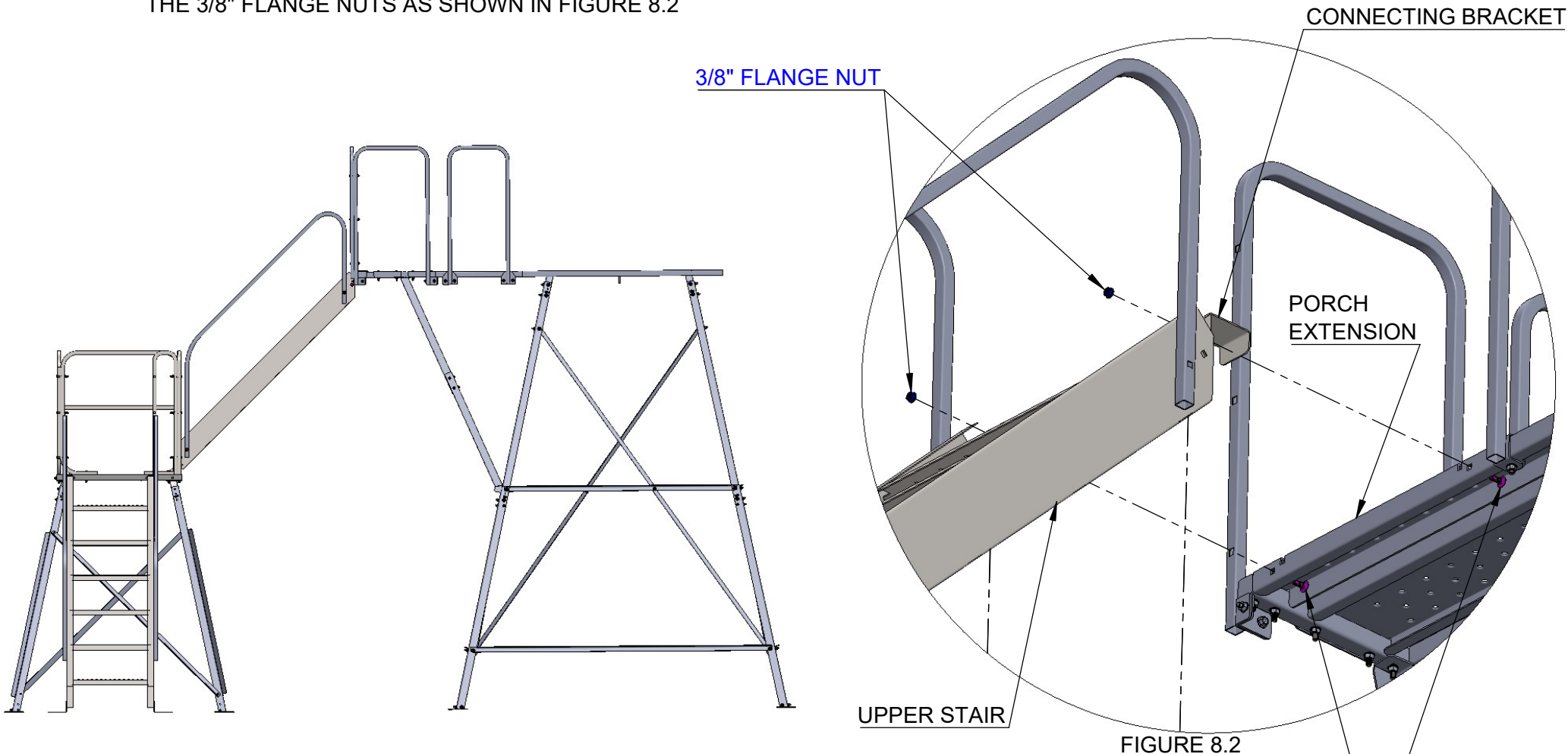
## HARDWARE

2 3/8" x 1.00" CARRIAGE BOLTS

2 3/8" FLANGE NUTS

### STEP 8.2

- POSITION THE UPPER STAIR BETWEEN THE 10' STAND AND THE TURN PLATFORM ON THE GROUND.
- WITH TWO PEOPLE USING THE TWO 10' A-FRAME LADDERS ON EACH SIDE OF THE UPPER STAIR, GRAB THE UPPER STAIR ON EACH SIDE AND WALK IT UP THE LADDERS AND HOOK THE CONNECTING BRACKETS OVER THE PORCH EXTENSION.
- THE THIRD PERSON WILL NEED TO GUIDE THE BOTTOM PORTION OF THE STAIR UP AND ONTO THE TURN PLATFORM (RESTING THE LANDING BRACKETS, THAT ARE CONNECTED TO THE BOTTOM OF THE UPPER STAIR, ONTO THE TURN PLATFORM LANDING.)
- **IMPORTANT!** THIRD PERSON SHOULD NOT STAND UNDERNEATH THE STAIR AS IT IS BEING LIFTED.
- NEXT ASSEMBLE UPPER STAIR TO 10' STAND USING THE 3/8" x 1.00" CARRIAGE BOLTS AND THE 3/8" FLANGE NUTS AS SHOWN IN FIGURE 8.2



3/8" x 1.00" CARRIAGE BOLT

**NOTE:** INSERT BOLTS FROM BACKSIDE, THREADS TOWARD STAIR



**HARDWARE**

2 3/8" FLANGE NUTS

2 3/8" x 2 1/4" CARRIAGE BOLTS

**STEP 8.3**

- ADJUST POSITION OF TURN PLATFORM TO ALIGN HOLES ON TURN PLATFORM WITH THE HOLES IN LANDING CONNECTING BRACKETS ON UPPER STAIR.
- ASSEMBLE THE UPPER STAIR TO TURN PLATFORM USING 3/8" x 2 1/4" CARRIAGE BOLTS AND 3/8" FLANGE NUTS AS SHOWN IN FIGURE 8.3

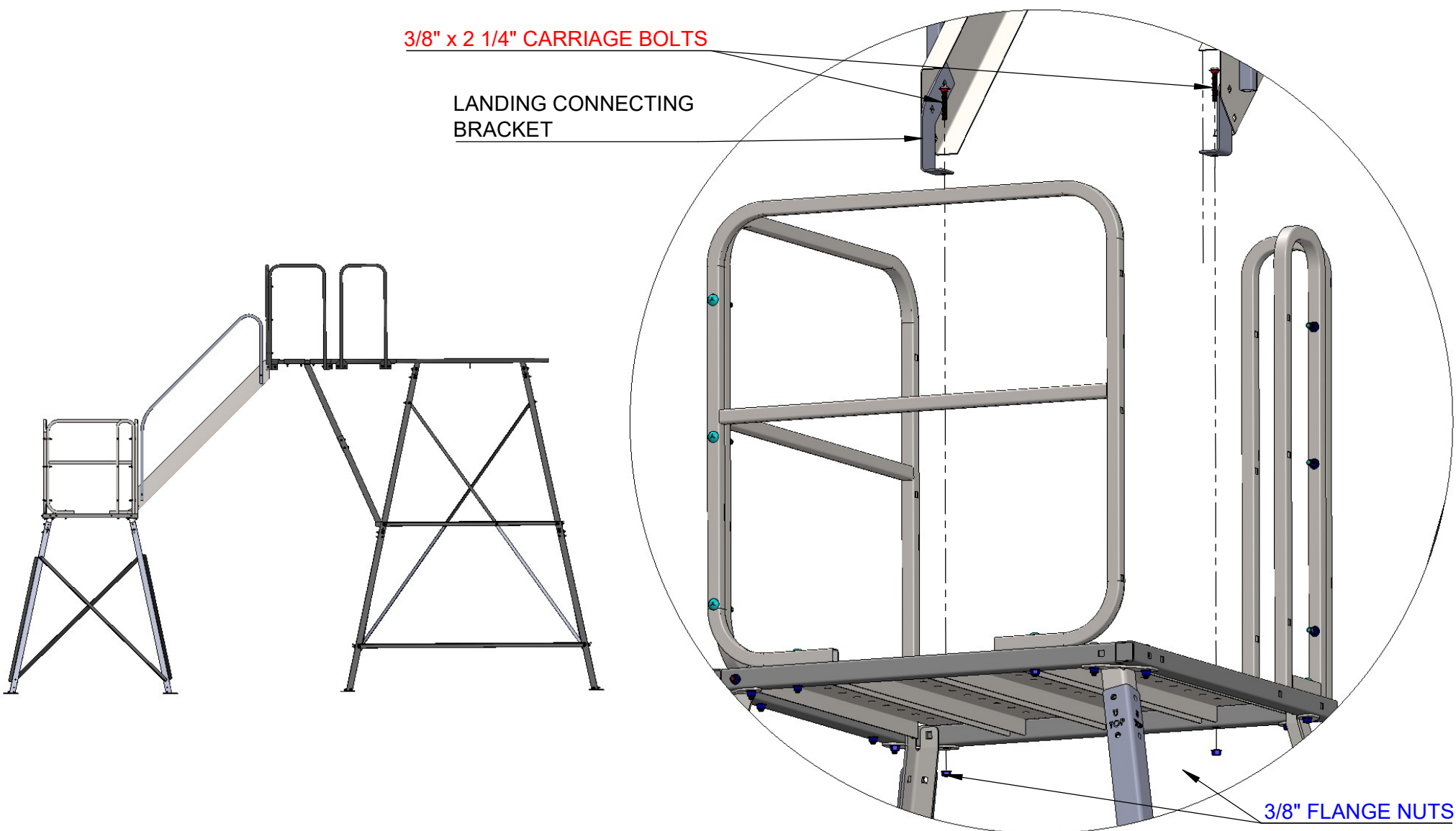


FIGURE 8.3

**PARTS & HARDWARE**

- 8 **FLANGE NUTS**
- 4 **3/8" X 2 1/4" CARRIAGE BOLTS**
- 4 **3/8" X 1" CARRIAGE BOLTS**
- 2 LOWER PLATFORM CONNECTOR BRACKET
- 2 STAIR HAND RAILS
- 2 FEET

**STEP 9: LOWER STAIR ASSY**

- ASSEMBLE LOWER STAIR ADAPTOR PLATES TO STAIR SIDE RAILS USING **3/8" X 1" CARRIAGE BOLT** AND **3/8" FLANGE NUT**.
- ASSEMBLE FEET TO STAIR SIDE RAILS USING **3/8" X 1" CARRIAGE BOLT** AND **3/8" FLANGE NUT**. (SEE FIGURE 9.3)
- ASSEMBLE HAND RAILS TO STAIR SIDE RAILS USING **3/8" X 2 1/4" CARRIAGE BOLT** AND **3/8" FLANGE NUT**. (SEE FIGURE 9.2)

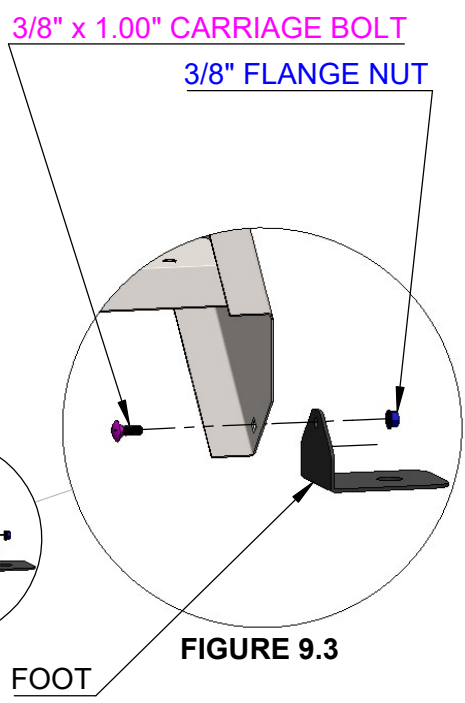
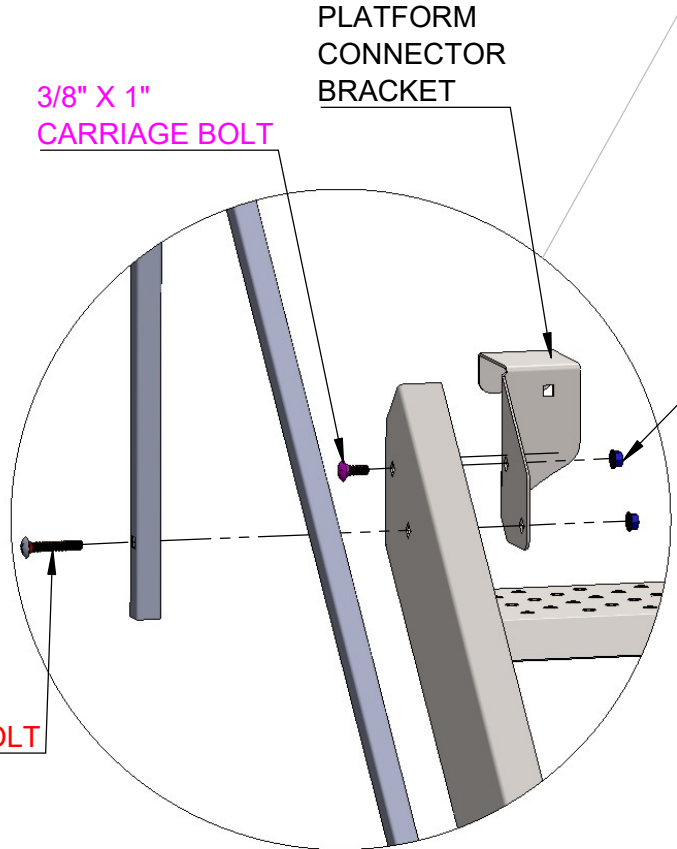
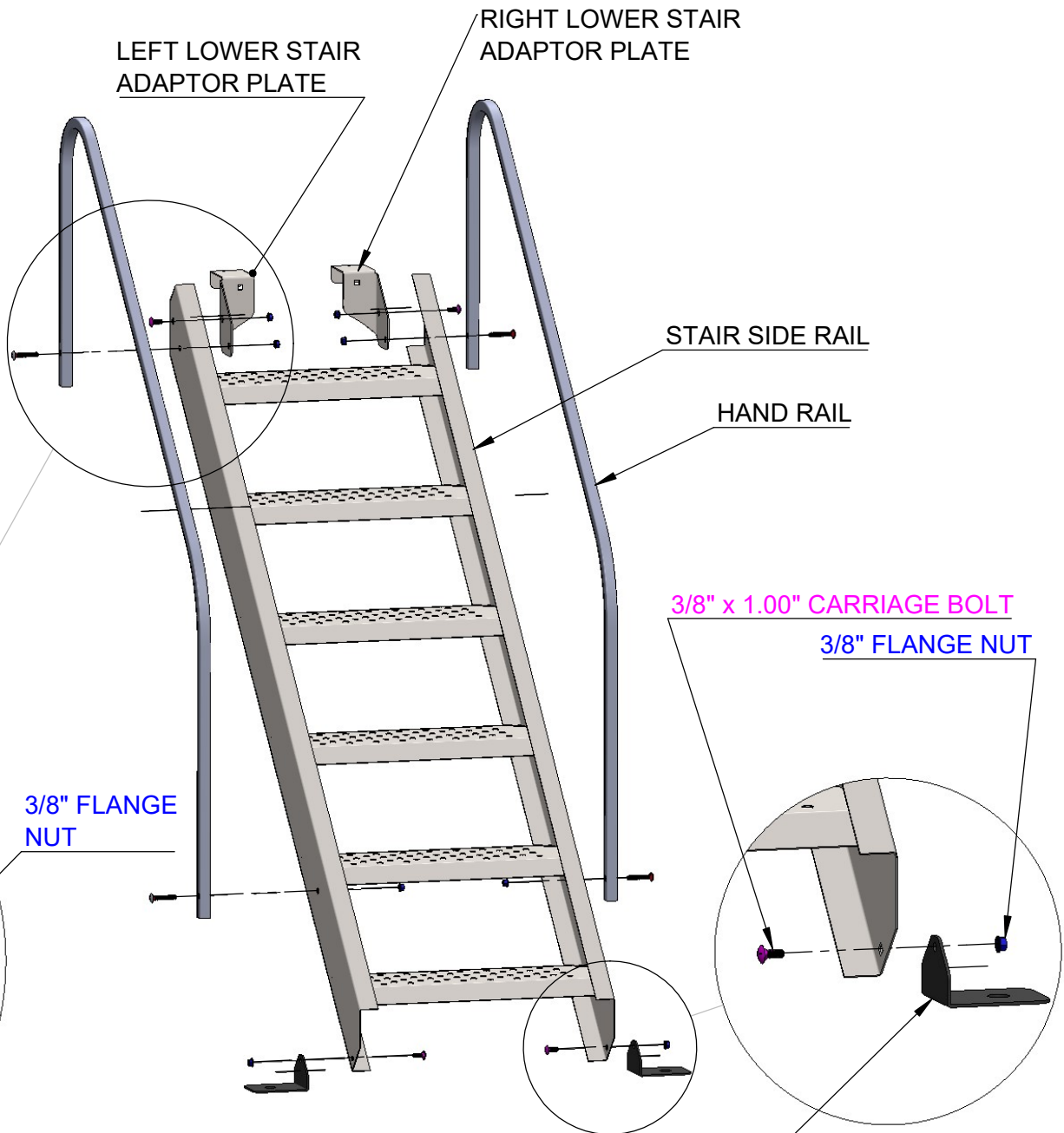


FIGURE 9.2

FIGURE 9.1

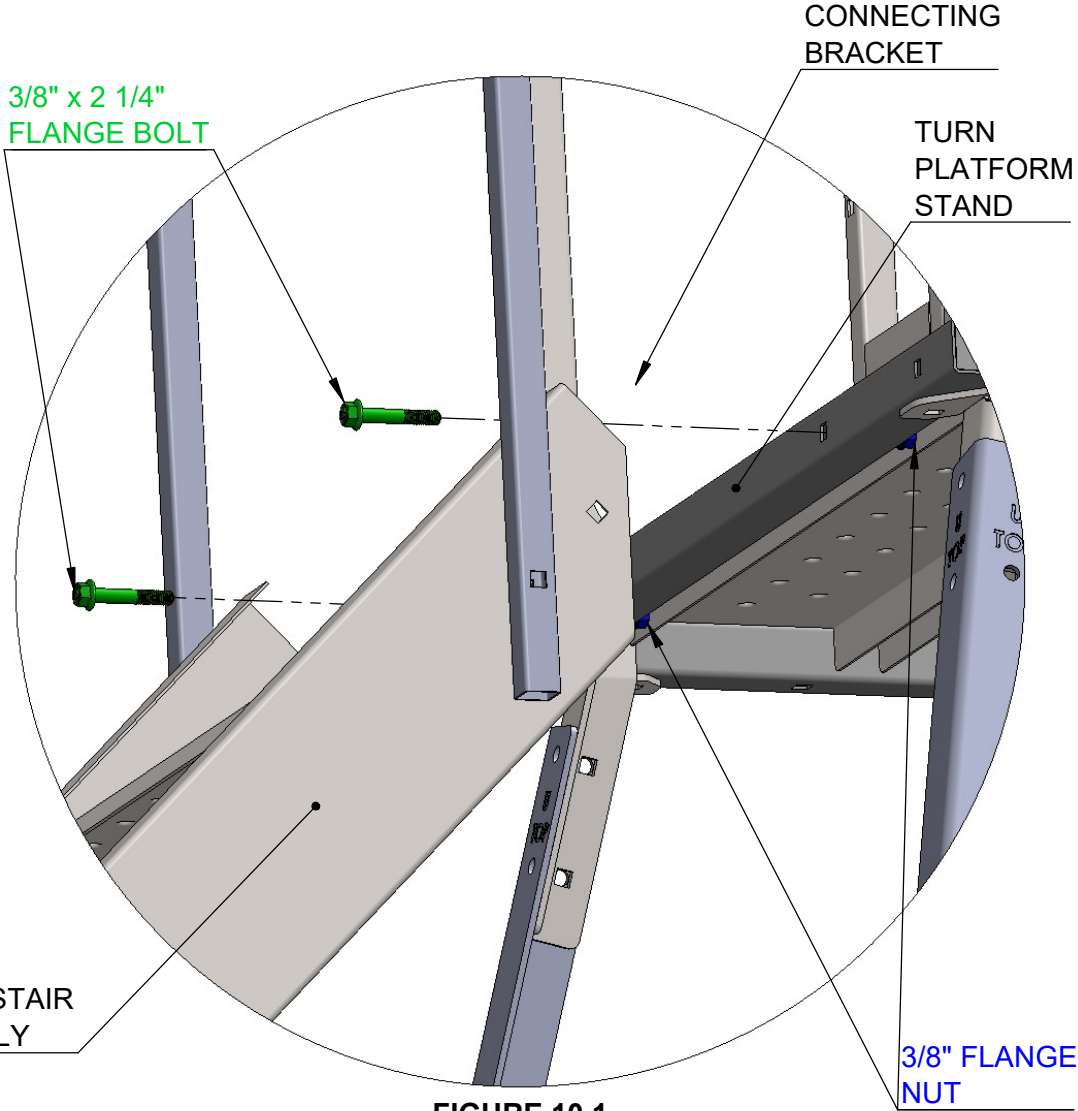
FIGURE 9.3

**PARTS & HARDWARE**

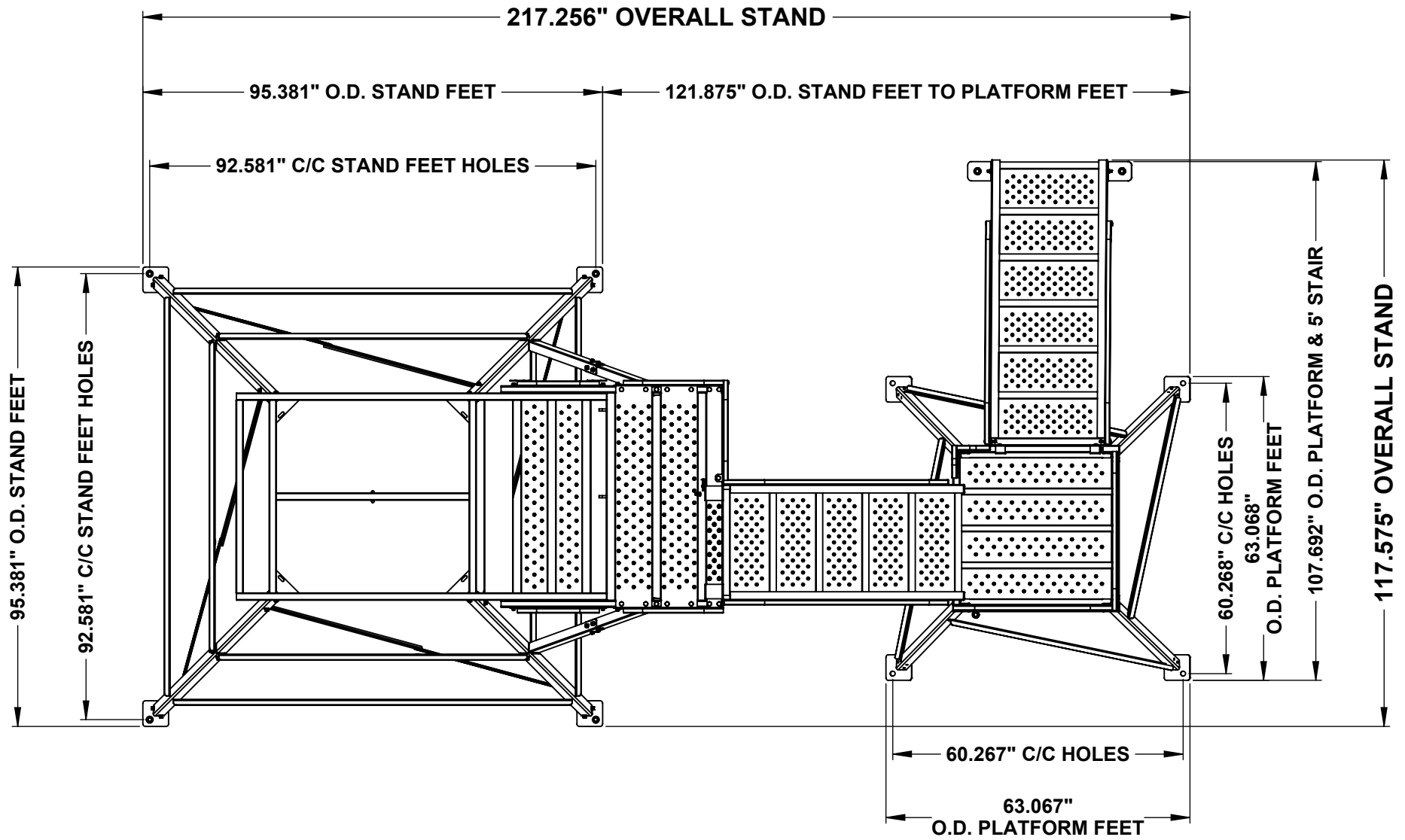
- 2 3/8" x 2 1/4" FLANGE BOLT
- 2 3/8" FLANGE NUT
- 1 LOWER STAIR ASSEMBLY
- 1 TURN PLATFORM STAND

**STEP 10**

WITH TWO PEOPLE (ONE ON EACH SIDE OF THE LOWER STAIR) LIFT THE LOWER STAIR AND HOOK THE CONNECTING BRACKETS OVER THE TURN PLATFORM ALIGNING HOLES AND ASSEMBLE USING 3/8" x 2 1/4" FLANGE BOLTS AND 3/8" FLANGE NUTS AS SHOWN IN FIGURE 10.1



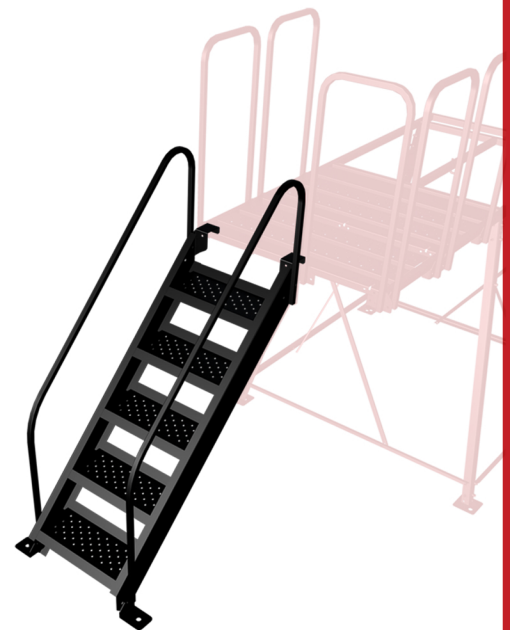
**FIGURE 10.1**



# RD-PLSTAIRS-5

## BOX 1: Ladder, Handrails, Brackets & Feet

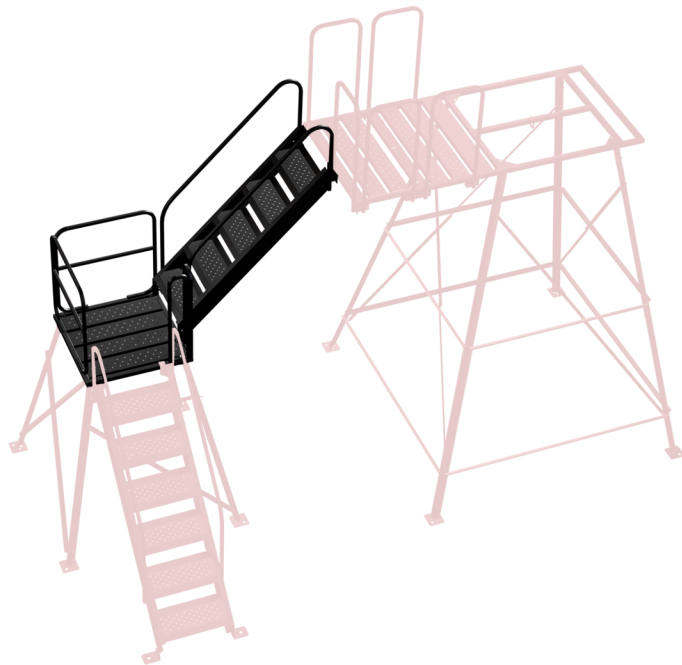
**NOTE:** Can be used as a 5' Stairway or Bottom Section of a 10' Stairway.



# RD-PLS-BOX 2

## BOX 2: Upper Stairway, Platform & Handrails

**NOTE:** To complete a 10ft Stairway, BOX 1 (RD-PLSTAIRS-5), BOX 2 (RD-PLS-BOX 2) & BOX 3 (RD-PLS-BOX 3) are required.



# RD-PLS-BOX 3

## BOX 3: Legs & Braces for 10' Stairway

**NOTE:** To complete a 10ft Stairway, BOX 1 (RD-PLSTAIRS-5), BOX 2 (RD-PLS-BOX 2) & BOX 3 (RD-PLS-BOX 3) are required.

