

# PALAVA

## Vivienne Dress

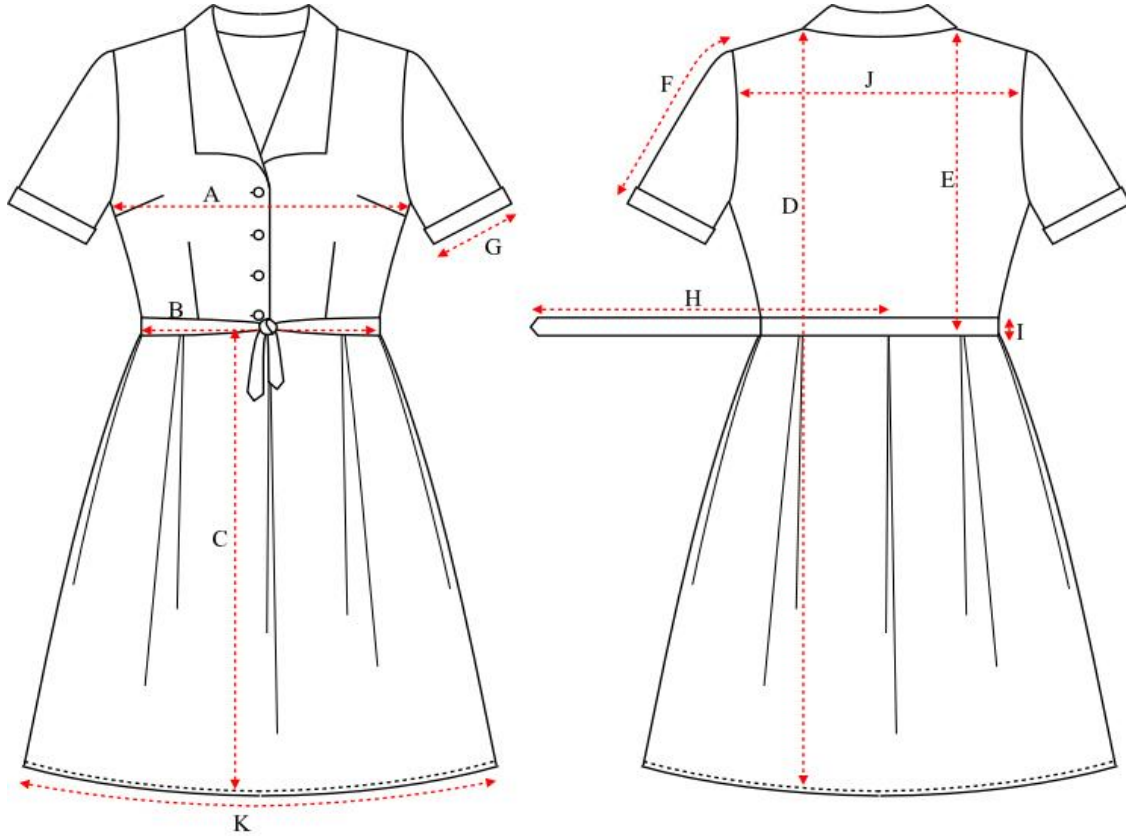
### How to use our size charts...

**These measurements are in centimetres, based on half the garment laid flat. The measurements are the size of the dress only, so please allow room for yourself!**

**Description :** Box pleat Dress with 3/4 sleeves and grown on collar

Pattern ID :

BD18VIVIENNE



MEASURING POINT	LOCATION	REF	6	8	10	12	14	16	18	20	22	24	26	TOL- /+
BUST	FROM ARMPIT TO ARMPIT	A	43	45.5	48	50.5	53	55.5	58	60.5	63	65.5	68	1
WAIST	FROM SIDE SEAM TO SIDE SEAM	B	35	37.5	40	42.5	45	47.5	50	52.5	55	57.5	60	1
SKIRT LENGTH	FROM WAIST TO HEM	C	66	66	66	66	66	66	66	66	66	66	66	1
OVER ALL LENGTH	HIGHEST SHOULDER POINT TO HEM	D	105.3	105.9	106.5	107.1	107.7	108.3	108.9	109.5	110.1	110.7	111	1
BODICE LENGTH	HIGHEST SHOULDER POINT TO WAIST	E	38.8	39.4	40	40.6	41.2	41.8	42.4	43	43.6	44.2	44.8	1
SLEEVE LENGTH	CROWN TO CUFF	F	25.3	25.9	26.5	27.1	27.7	28.3	28.9	29.5	30.1	30.7	31.3	1
SLEEVE OPENING		G	14.8	15.4	16	16.6	17.2	17.8	18.4	19	19.6	20.2	20.8	1
BELT LENGTH	1/2 length	H	90.5	93	95.5	98	100.5	103	105.5	108	110.5	113	115.5	1
BELT WIDTH	Width (folded)	I	3	3	3	3	3	3	3	3	3	3	3	1
ACROSS THE BACK	13CM DOWN FROM CENTER BACK OPENING	J	33.9	35.7	37.5	39.3	41.1	42.9	44.7	46.5	48.3	50.1	51.9	1
SKIRT HEM	SIDE SEAM TO SIDE SEAM	K	92.7	95.2	97.7	100.2	102.7	105.2	107.7	110.2	112.7	115.2	118	1