

PALAVA

Rita Dress

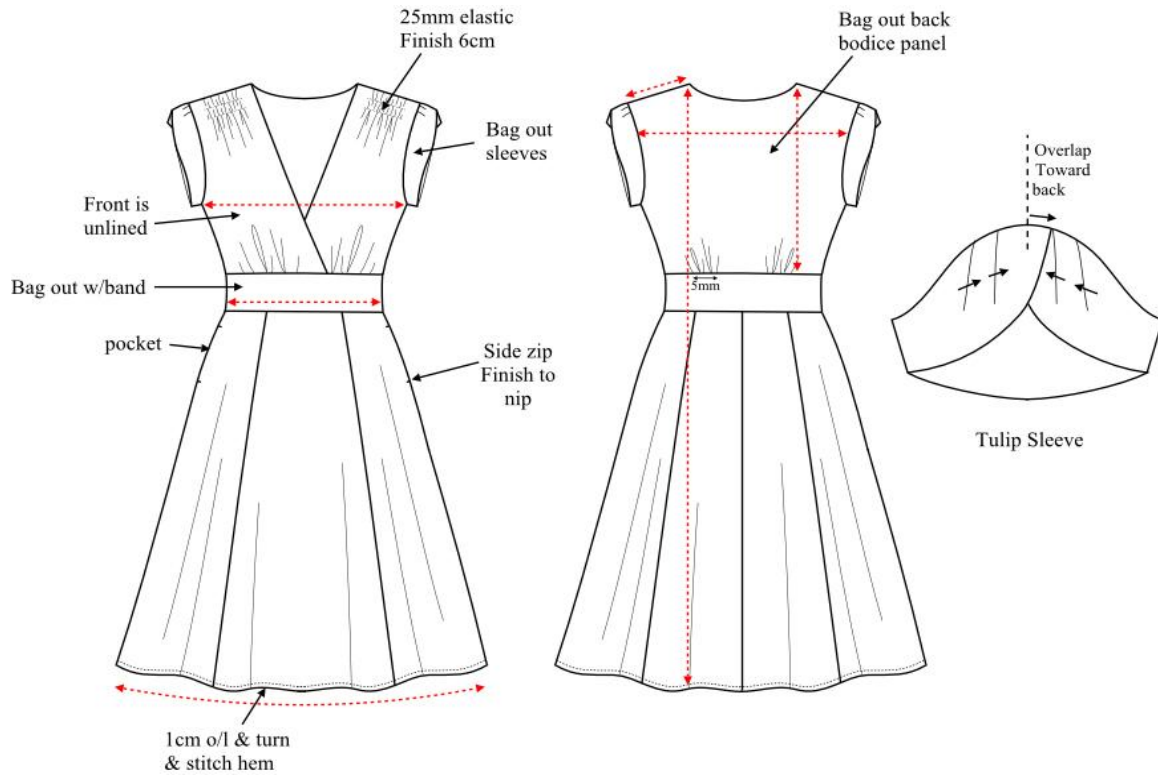
How to use our size charts...

These measurements are in centimetres, based on half the garment laid flat. The measurements are the size of the dress only, so please allow room for yourself!

Description : Dress with Tulip Sleeve

Pattern ID :

BD18RITA/BD18RITALRG



MEASURING POINT	LOCATION	REF	Standard sizes								Plus sizes				TOL -/+
			6	8	10	12	14	16	18	20	22	24	26		
BUST	2.5cm from underarm	A	42.3	44.8	47.3	49.8	52.3	54.8	57.3	60.5	63	65.5	68	1	
WAIST		B	32	34.5	37	39.5	42	44.5	47	51.3	53.8	56.3	58.8	1	
HEM		C	56	58.5	61	63.5	66	68.5	71	134.5	137	139.5	142	1	
SHOULDER		D	9.7	10	10.3	10.6	10.9	11.2	11.5	11	11.3	11.6	11.9	1	
ACROSS BACK	13cm down from neck	E	13.7	15.1	16.5	17.9	19.3	20.7	22.1	18.1	19.7	21.3	22.9	1	
LENGTH	From neck point to hem	F	103.6	104.3	105	105.7	106.4	107.1	107.8	103.7	104	104.3	105	1	
BODICE LENGTH	from neck point to waist excluding waistband	G	30.6	31.3	32	32.7	33.4	34.1	34.8	33.8	34.1	34.4	34.7	1	