

PALAVA

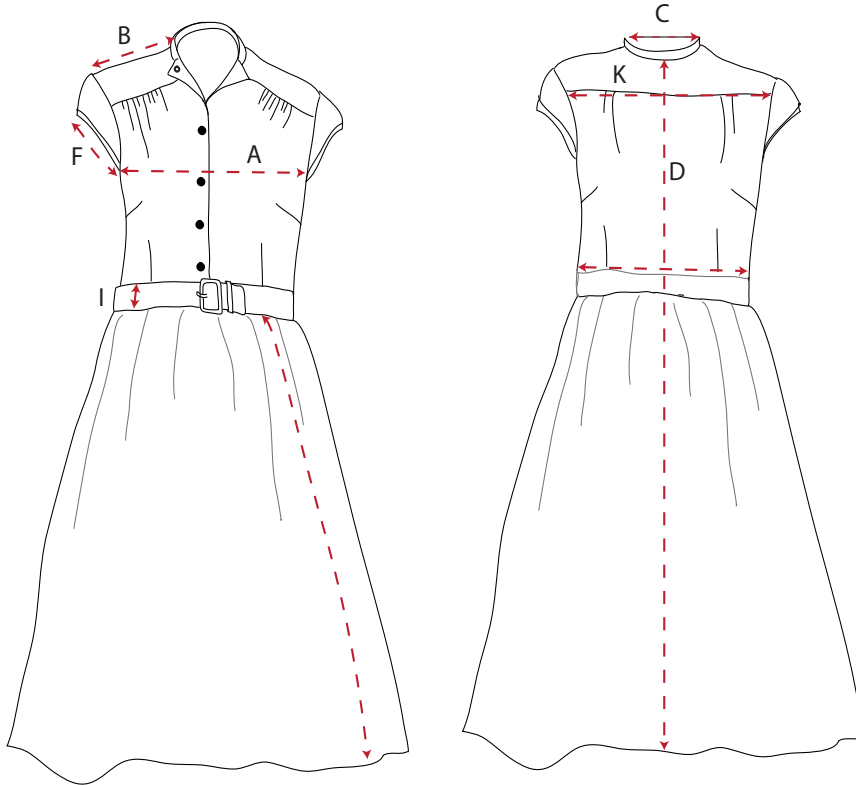
LOUISE

How to use our size charts...

These measurements are in centimetres, based on half the garment laid flat. The measurements are the size of the dress only, so please allow room for yourself!

Discription : Belted shirt dress

Pattern ID :



MEASURING POINT	LOCATION	REF	6	8	10	12	14	16	18	20	22	24	26	28	TOL -/+
BUST	FROM ARMPIT TO ARMPIT	A		49	52	55	58	61	64	68	71	74	77	80	1
SHOULDER	FROM NECK SEAM TO SHOULDER	B	11.5	12.5	13	13.5	14	14.5	15	15.5	16	16.5	17	17.5	0.5
NECK WIDTH	BOTTOM OF COLLAR SIDE TO SIDE	C	18.5	19	19.5	20	20.5	21	21.5	22	22.5	23	23.5	24	0.5
OVER ALL LENGTH	CENTER BACK WITHOUT COLLAR	D	106	106	107	107	108	108	109	109	200	200	201	201	1
WAIST	FROM SIDE SEAM TO SIDE SEAM	E	35	36	37	39.5	42	44.5	47	49.5	52	54.5	57	59.5	1
ARM WIDTH	ARMPIT TO OUTER SHOULDER	F	15	15.5	16.5	17.5	18.5	19.5	20.5	21.5	22.5	23.5	24.5	25.5	1
CUFF		G	13	13.5	14	15	16	17	18	19	20	21	22	23	1
SKIRT LENGTH	WAIST TO HEM	H	62	62	62	62	62	62	62	62	62	62	62	62	1
BELT LENGTH	1/2 length (folded)	I	34	36	38	40	42	43	45	47	49	51	53	55	0.5
BELT WIDTH	TOTAL WIDTH	J	4	4	4	4	4	4	4	4	4	4	4	4	0
ACROSS THE BACK		K	34.5	36	37.5	39	41.5	43	44.5	45.5	47	48.5	50	51.5	1