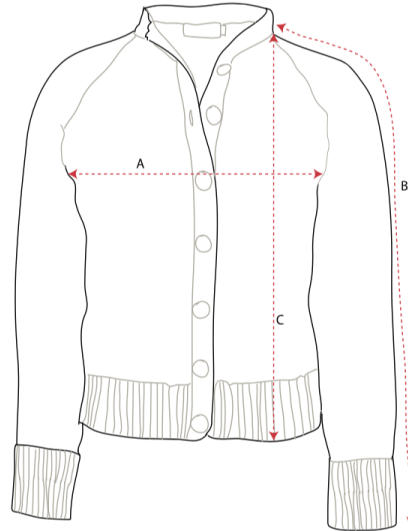


PALAVA

Molly Green - SIZE CHART



Molly is a chunky and roomy fitting cardigan. The measurements below are of the cardigan, taken when lying flat. Compare with your favourite fitting cardigan or double the measurements and compare with your own, remembering to allow plenty of 'breathing room'!

SIZE			CHEST (A)		SLEEVE (B)		LENGTH (C)	
UK	EURO	US	CM	INCHES	CM	INCHES	CM	INCHES
S (8-10)	36-38	4-6	50.5	19 7/8	63	24 4/5	51	20 1/9
M (12-14)	40-42	8-10	52	20 1/2	67.5	26 4/7	53.5	21
L (16-18)	44-46	12-14	55.5	21 6/7	67.5	26 4/7	55	21 2/3

Still not sure which size to go for? We're always happy to offer fitting advice. Drop us an email at hello@palava.co or give us a call on +44 (0)207 052 3888.