

# PALAVA

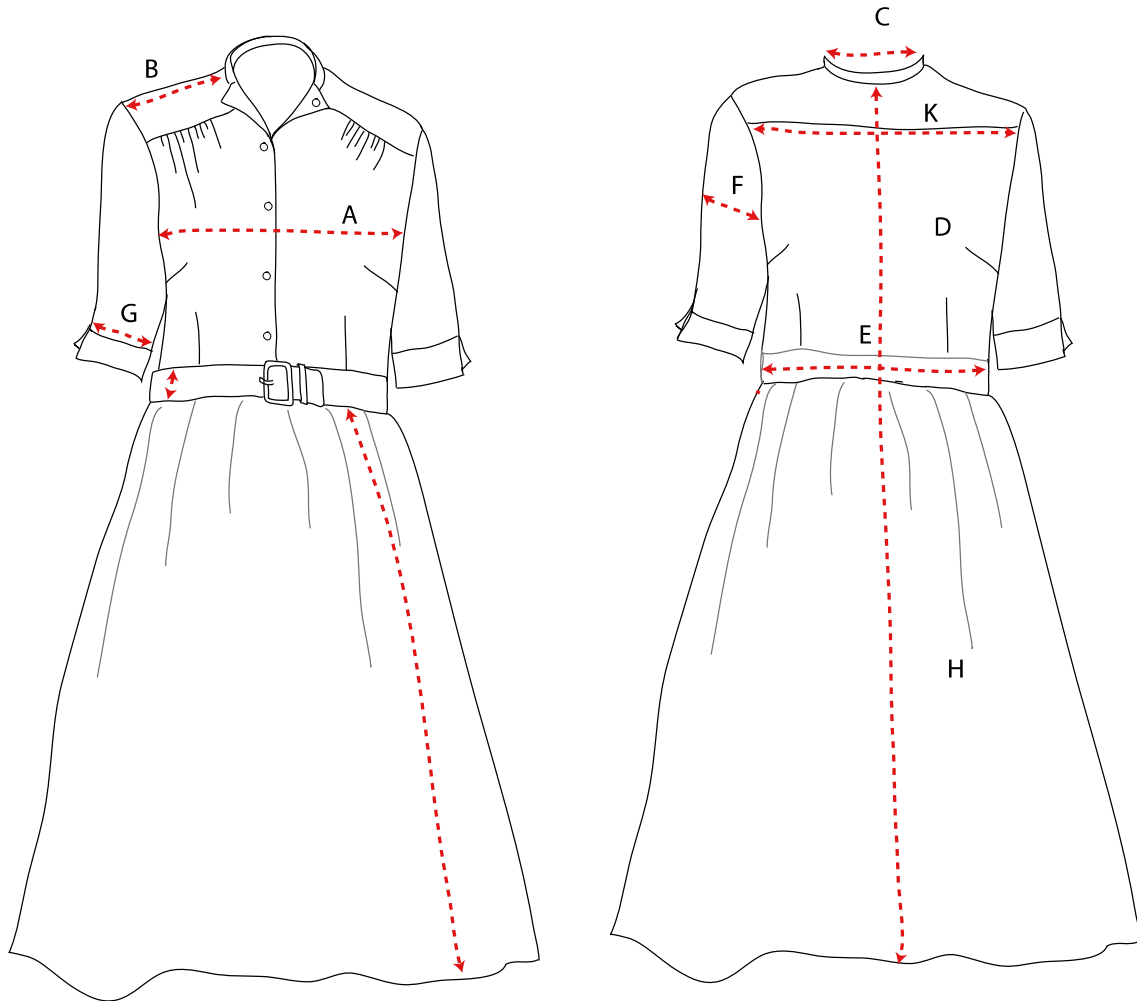
## Cynthia

How to use our size charts...

**These measurements are in centimetres, based on half the garment laid flat. The measurements are the size of the dress only, so please allow room for yourself!**

Description : Belted shirt dress

Pattern ID :



MEASURING POINT	LOCATION	REF		8	10	12	14	16	18	TOL -/+
BUST	FROM ARMPIT TO ARMPIT	A		49	52	55	58	62	65	1
OVER ALL LENGTH	CENTER BACK WITHOUT COLLAR	D		106	107	200	200	200	200	1
WAIST	FROM SIDE SEAM TO SIDE SEAM	E		36	37	40	43	46	49	1
ARM WIDTH	ARMPIT TO OUTER SHOULDER	F		15.5	16.5	18	19	19.5	20	1
BELT WIDTH	TOTAL WIDTH	J		4	4	4	4	4	4	0