

PALAVA

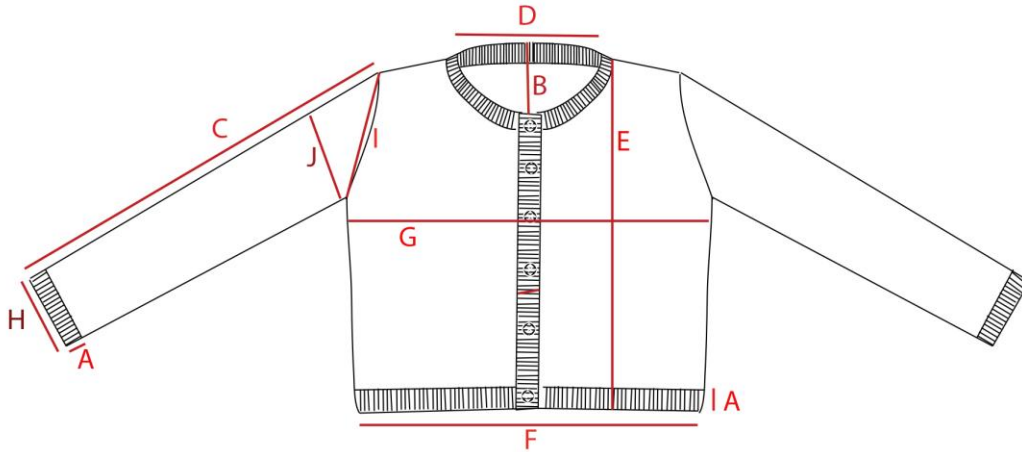
CLASSIC CARDIGAN - 3/4 LENGTH SLEEVE

How to use our size charts...

These measurements are in centimetres, based on half the garment laid flat. The measurements are the size of the dress only, so please allow room for yourself!

Discription : CARDIGAN WITH BUTTONS DOWN THE FRONT AND 3/4 LENGTH SLEEVE

Pattern ID :



MEASURING POINT	LOCATION	REF	S	M	L	1XL	2XL	3XL					TOL
UK APPROX SIZING			(8-10)	(12-14)	(16-18)	(20-22)	(24-26)	(27-28)					
RIBBING	CUFFS AND HEM	A	5	5	5	5	5	5					0
NECK DROP	CENTER BACK TO FRONT	B	6.5	7	7.5	8	8.5	6					0.5
ARM LENGTH 3/4	SHOULDER TO END OF CUFF	C	40	41.5	43.5	44.5	45.5	46.5					0.5
FULL LENGTH	CENTER BACK TO END OF CUFF	E	48	49.5	51.5	52.5	53.5	54.5					0.5/1
WIDTH ALONG HEM	ALONG THE HEM	F	35	39	44	48	52	56					0.5/1
WIDTH ACROSS BUST	UNDER ARM TO UNDER ARM	G	45	49	54	59	64	66					0.5/1
CUFF WIDTH	END OF SLEEVE	H	8.5	10	11.5	12.5	14.5	16.5					0.5
UNDER ARM		I	21	22.5	24	26	28	30					0.5
ARM WIDTH	ACROSS BICEP	J	15	16.5	18	20	22	24					0.5
BUTTON PLAQUET WIDTH		K	1.5	1.5	1.5	1.5	1.5	1.5					0
AMOUNT OF BUTTONS			6	6	6	7	7	7					