

PALAVA

Annie Dress

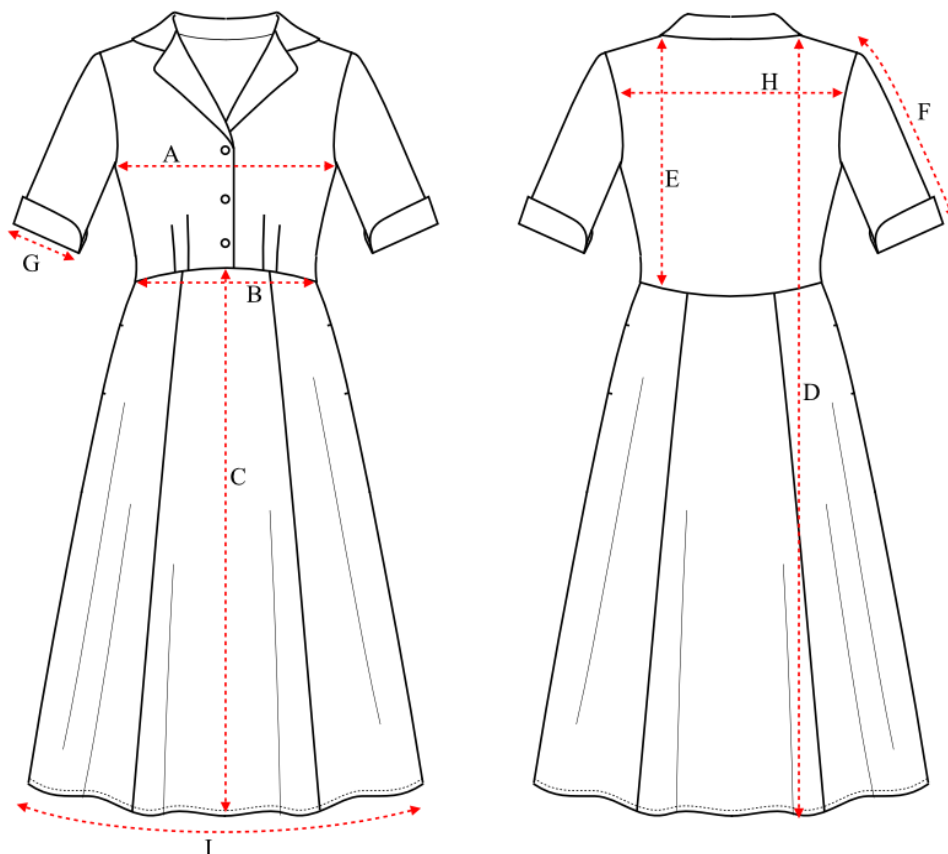
How to use our size charts...

These measurements are in centimetres, based on half the garment laid flat. The measurements are the size of the dress only, so please allow room for yourself!

Description :

Pattern ID :

BD19ANNIE



MEASURING POINT	LOCATION	REF	8	10	12	14	16	18	TOL - /+
BUST	FROM UNDER ARM TO UNDER ARM	A	48.5	51	53.5	56	58.5	61	1
WAIST	FROM SIDE SEAM TO SIDE SEAM	B	36.5	39	41.5	44	46.5	49	1
SKIRT LENGTH	FROM WAIST TO HEM	C	76.5	76.5	76.5	76.5	76.5	76.5	1
OVER ALL LENGTH	HIGHEST SHOULDER POINT TO HEM	D	110.1	110.7	111.3	111.9	112.5	113.1	1
BODICE LENGTH	HIGHEST SHOULDER POINT TO WAIST	E	33.4	34	34.6	35.2	35.8	36.4	1
SLEEVE LENGTH	CROWN TO CUFF	F	35.6	36.2	36.8	37.4	38	38.6	1
CUFF	HALF MEASURE	G	14	14.6	15.2	15.8	16.4	17	1
ACROSS BACK	13CM DOWN FROM CENTER BACK OPENING	H	41.8	43	44.2	45.4	46.6	47.8	1
SKIRT HEM	SIDE SEAM TO SIDE SEAM	I	79.5	82	84.5	87	89.5	92	1