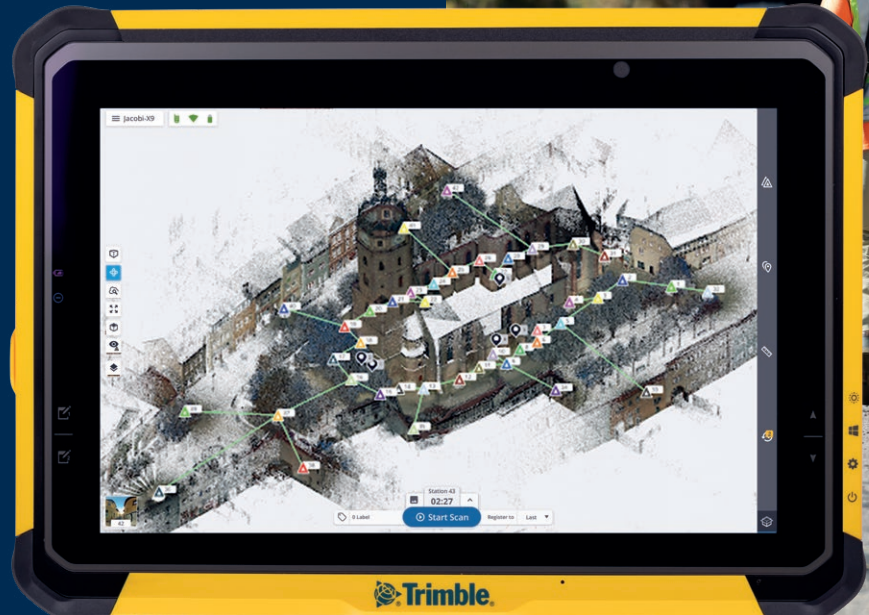


Trimble T10x

TABLET

Confidently tackle large scanning datasets and workflows.



Powerful tablet for processing intensive scanning projects

Powerful

High-performance, energy-efficient Intel® 13th Generation Core i7 series processor.

1 TB of storage, ideal for process-intensive scanning tasks.

32 GB internal memory.

Efficient

High capacity, field-swappable battery.

Sunlight readable 10.1 inch capacitive touch screen for indoor and outdoor use.

Slim, lightweight and durable form factor.

Productive

Optimized for use with Trimble® Perspective scanning software.

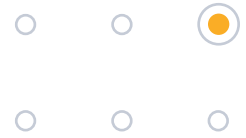
Handle large amounts of data, increasing overall scanning productivity.



Find out more at:
geospatial.trimble.com/t10x

Trimble T10x

Tablet



STANDARD FEATURES

SYSTEM	
Intel 13th Gen Core i7 Processor	
32 GB RAM	
Memory: 1 TB Storage ¹	
10.1 in (256 mm) LCD Screen	
8 MP rear camera	
OPERATING SYSTEM	
Microsoft® Windows® 11 IoT Enterprise	
COMMUNICATIONS	
Bluetooth® v5.3	
Wi-Fi 802.11ax	
USB 3.0 Type A, USB-C	
STANDARD ACCESSORIES	
Active stylus	
Hand strap	
AC-DC power adapter with cord	
Screen protector	
OPTIONAL ACCESSORIES	
Shoulder strap	
Carry case	
Single battery charger kit	
Active stylus	
Hot-swappable batteries	

TECHNICAL SPECIFICATIONS

ENVIRONMENTAL	
Temperature ²	
Operating	-10 °C to +60 °C (14 °F to 140 °F)
Storage	-55 °C to +70 °C (-67 °F to +158 °F)
Humidity	0%–90% non-condensing MIL-STD-810H, Method 507.6, Procedure II (aggravated cycle)
Water and dust proof	IP65 (with port access doors closed)
Shock, drop	MIL-STD-810H, Method 516.8, Procedure-I, IV

TECHNICAL SPECIFICATIONS

INPUT/OUTPUT	
User Interface	Power button, programmable function keys, battery status system LED, display brightness interface
Display	LED backlight, scratch-resistant
Size	256 mm (10.1 in) multi-touch
Resolution	1920 x 1200 px
Brightness	800 Nits
Audio	Built in microphone and speaker
I/O	USB-C with PD charging, USB 3.0 Type A
Digital camera	8 MP (rear-facing)
PHYSICAL	
Size	7.8 x 11 x 0.79 in (198 x 279 x 20 mm) HxWxD
Weight	1.4 kg (3.1 lbs)
Battery	8000 mAh hot-swappable ³
AC/DC ADAPTER	
Input	100–240 V AC
Output	20 V, 3.25 A, 65 W, Type-C
GNSS	
GPS, QZSS, GLONASS, Galileo, BeiDou	

- 1 Total useable memory will be less depending on actual system configuration.
- 2 For battery safety and optimal functionality and performance, the recommended usage temperature range is from -10 °C to +45 °C (14 °F to 113 °F).
- 3 Battery operation and recharge times will vary based on many factors including screen brightness, applications, features, power management, battery conditioning and other settings and preferences.

Specifications subject to change without notice.



Vectors Colorado - (303) 283-0343
10670 East Bethany Drive, Building 4
Aurora, CO 80014

Vectors New Mexico - (505) 821-0343
5640 Venice Avenue, Unit J
Albuquerque, NM 87113

Contact your local Trimble Authorized Distribution Partner for more information

NORTH AMERICA
Trimble Inc.
10368 Westmoor Dr
Westminster CO 80021
USA

EUROPE
Trimble Germany GmbH
Am Prime Parc 11
65479 Raunheim
GERMANY

ASIA-PACIFIC
Trimble Navigation
Singapore PTE Limited
3 HarbourFront Place
#13-02 HarbourFront Tower Two
Singapore 099254
SINGAPORE

