

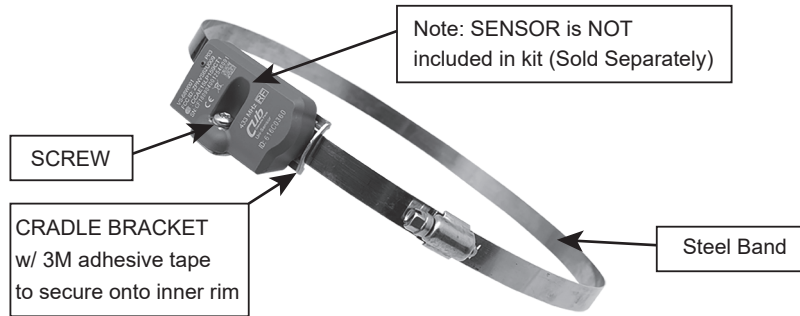
TPMS SENSOR STEEL BAND KIT

QUICK INSTALLATION GUIDE

Part Numbers

RV TPMS-STBAND12 : This TPMS Sensor steel band kit is to be used for wheels with rim diameters from 12" ~ 17.5".

RV TPMS-STBAND18 : This TPMS Sensor steel band kit is to be used for wheels with rim diameters from 18" ~ 24".



Component List

Item	Quantity
Steel Band	1
Cradle Bracket	1
Screw	1

IMPORTANT NOTE: RV TPMS-STBAND12 and RV TPMS-STBAND18 kits are compatible with Tuson and CUB sensors ONLY.

Secure TPMS Sensor onto the Cradle Bracket

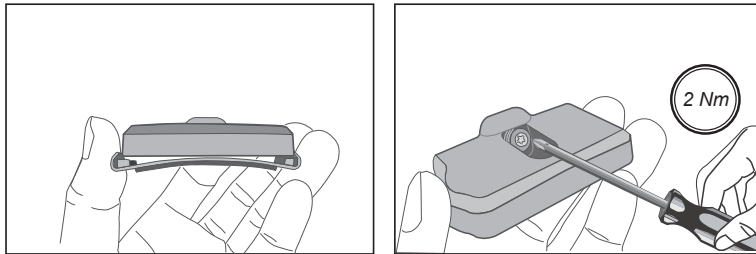


Fig1.

Fig2.

(Fig 1) Place the sensor horizontally on the cradle bracket, make sure there is the gap between sensor and bracket.

(Fig 2) Place the mounting screw through the sensor's mounting hole into the threaded hole on the cradle bracket. Use a Torx 20 screwdriver to tighten the screw to 18 in-lbs (2.0 Nm) of torque.

Secure TPMS Sensor Steel Band Assembly onto the Wheel

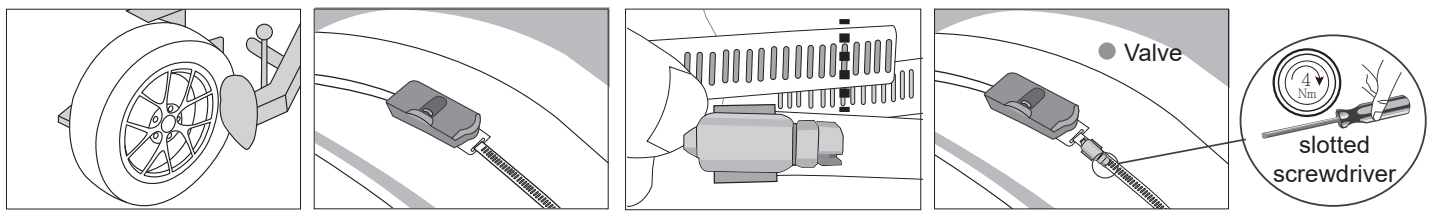


Fig1.

Fig2.

Fig3.

Fig4.

(Fig 1) Remove the tire from the wheel.

(Fig 2) Thread the steel band through both gaps on the bottom of the cradle bracket and wrap the steel band around the inner rim of the wheel.

(Fig 3) Align the hex screw head with the other end of the steel band. If necessary, cut off any excess length of the steel band that passes the top of the screw head with an appropriate shearing tool and insert the end of the steel band into the gap underneath the screw head.

(Fig 4) Move the cradled sensor near the valve stem hole on the wheel. The section of the steel band under the cradled sensor must be solid, NOT slotted. Clean the section of the inner rim where the cradled sensor will be affixed to by wiping the area clean with isopropyl alcohol and a clean rag. Peel off the 3M double-sided adhesive backing and affix the cradle bracket to the selected location on the inner rim near the valve stem hole. Now use a 8mm hex socket torque driver or flat head torque screwdriver to tighten the hex screw head of the band onto the inner rim of the wheel to 36 in-lbs (4 Nm) of torque.

Note: After completing the TPMS sensor steel band installation, mount the tire back onto the wheel, then balance the wheel to achieve good rotational balance for the completed wheel assembly.

TPMS SENSOR STEEL BAND KIT

QUICK INSTALLATION GUIDE

Customer Service

All product support is provided by the distributor that your product was purchased from. Please contact the distributor who originally sold you your Tuson product.

Or contact us:

Toll Free: 800-968-8766 Email: InfoRVBrakes@tuson.com

Tuson RV Brakes, LLC, 475 Bunker Court, Vernon Hills, IL 60061

www.tusonrvbrakes.com



Tuson RV Brakes, LLC

Limited Warranty

Tuson RV Brakes, LLC (Tuson) warrants the TPMS Sensor steel band kit(s) to be free of defects in material and workmanship for a period not to exceed TWO (2) years from the date of sale to the original consumer, or to the first retail purchaser of a trailer on which the TPMS Sensor steel band kit is installed. Original receipt(s) or other acceptable proof of purchase should be retained by the customer for verification of warranty date.

THIS WARRANTY IS NOT TRANSFERABLE.

Tuson's obligations under this warranty shall be limited to crediting the account of a direct buying distributor or OEM trailer manufacturer, replacing or repairing the TPMS Sensor steel band kit products which are determined by Tuson to be defective in material or workmanship, within 60 days of receipt of such product by Tuson. Tuson reserves the right to request the product be returned intact, freight prepaid, PRIOR to processing any claim for warranty.

Warranty claim must be received by Tuson within 30 days of the discovery of the alleged defect, or within 30 days of the expiration of the warranty, whichever is earlier. Covered repairs or replacements will be made at Tuson's expense. Shipment of replacement product or repaired product by Tuson will be via best available ground shipment carrier. Shipments other than by best available ground shipment carrier, must be requested in writing and must be paid for in advance by the customer. Returned product that is found not to be defective, will be returned at sender's expense.

This Warranty shall not include any products which have been improperly installed, installed contrary to installation instructions provided with the product, altered, tampered with or changed in any way, or utilized in a manner not approved by Tuson. This Warranty shall not extend to any defects arising from abuse, misuse, accident, improper wiring, or negligence of the installer or the consumer.

EXCEPT AS EXPRESSLY SET FORTH ABOVE, NO OTHER WARRANTY, EXPRESS OR IMPLIED, AT LAW OR IN EQUITY, IS MADE BY TUSON CORPORATION IN RESPECT OF THE PRODUCT, INCLUDING WITHOUT LIMITATION ANY IMPLIED WARRANTY OF MERCHANTABILITY, FITNESS FOR A PARTICULAR PURPOSE OR ANY OTHER WARRANTY, AND ANY SUCH WARRANTIES ARE EXPRESSLY DISCLAIMED.

IN NO EVENT SHALL TUSON BE LIABLE TO PURCHASER OR ANY THIRD PARTY FOR ANY LOST PROFITS, CONSEQUENTIAL, EXEMPLARY, INDIRECT, PUNITIVE, INCIDENTAL, OR SPECIAL DAMAGES OR COSTS (INCLUDING ATTORNEY FEES), OR LOSS OF GOOD WILL RESULTING FROM ANY CLAIM (INCLUDING BUT NOT LIMITED TO ANY CAUSE OF ACTION SOUNDING IN CONTRACT, TORT, NEGLIGENCE, STRICT LIABILITY OR PRODUCT LIABILITY) REGARDING THIS AGREEMENT, EVEN IF THE COMPANY HAS BEEN ADVISED OF THE POSSIBILITY OF SUCH DAMAGES.

Some states do not allow the exclusion or limitation of implied warranties, incidental or consequential damages, so the above limitations or exclusions may not apply to you. This Warranty gives you specific rights. You may have other rights, which vary from state to state.