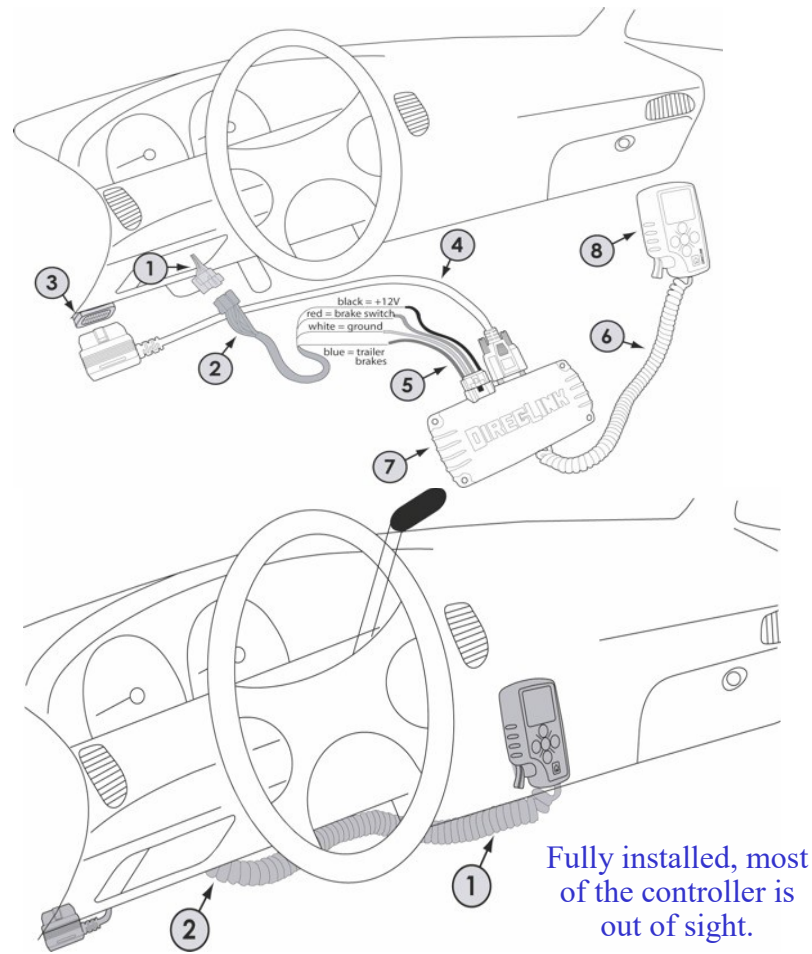


DirecLink— Easy To Install



The required electrical connections are indicated by the numbers in the diagram above:

1. Vehicle specific trailer wiring connector (already in vehicle or can be purchased)
2. Vehicle specific trailer wiring harness (must buy separately)
3. Vehicle OBDII connector (already in vehicle)
4. OBDII to DB9 Cable (included with DirecLink)
5. Delphi 4 Wire Harness (included with DirecLink)
6. Spiral Cable (included with DirecLink)
7. DirecLink Control Module
8. DirecLink Command Module

Three Models

DirecLink-100

For use with electric brakes and all types of electric-hydraulic trailer brake systems

DirecLink-200NE

NE is the network enhanced version of DirecLink. Can be used with Tuson's ActuLink Actuator and ABS system

DirecLink-50

Tuson RV Brakes is proud to announce the new DirecLink-50 trailer brake controller to be launched end of 2017. The DirecLink-50 is an affordable proportional brake controller for use with electric and electric-hydraulic brakes.



For more information about DirecLink and all of Tuson towable products, visit our website
www.tusonrvbrakes.com

Tuson RV Brakes, LLC
475 Bunker Court
Vernon Hills, IL, 60061
800-968-8766

inforvbrakes@tuson.com

DirecLink

Trailer Brake Controller

DirecLink-50 **NEW**
DirecLink-100



TUSON

Tuson RV Brakes, LLC

The Leader in Towable Safety Technology

DirecLink

Trailer Brake Controller and Diagnostic Tool

Plugs directly into your tow vehicle's computer network linking your trailer brakes to provide the smoothest, most reliable trailer braking you've ever experienced.

PART NO.	DESCRIPTION	HIGHLIGHT
DL-50	For 1 to 4 Axle, Proportional, Trailer Brake Controller	Coming Soon
DL-100	For 1 to 4 Axle, Proportional, Trailer Brake Controller	HD Truck Module Available

- 1-4 Axle Trailer
- Proportional Brake Control
- Trailer Size Adjustable
- Powerful Diagnostics Capability
- Display in Clear Plain Language, incorporated in Large Color Display
- Plug & Play, Humanized Design features make DirecLink easy to install and use
- Automatically Configures to your Tow Vehicle
- Automatically Configures to your Trailer Brake System
- Limit Lifetime Warranty

Color Display

The large 1.8" inch color display makes it easy to read information on the DirecLink. Also user-friendly interface displays in clear, plain language.



Powerful Diagnostics Capability

DirecLink-50 **NEW**

Tuson RV Brakes is proud to announce the new DirecLink-50 trailer brake controller to be launched in 2017. The DirecLink-50 is an affordable proportional brake controller for use with electric and electric-hydraulic brake actuators.

- Trailer Connection
- Tow Vehicle Battery Voltage
- OBDII Network Connection Integrity
- Brake Controller Ground Connection
- Brake Controller Power Connection
- Brake Switch Voltage
- Blue Wire Voltage Output
- Blue Wire Current Output
- Blue Wire Short
- Engine RPM

DirecLink-100

- Trailer Connection
- Tow Vehicle Battery Voltage
- OBDII Network Connection Integrity
- Brake Controller Ground Connection
- Brake Controller Power Connection
- Brake Switch Voltage
- Blue Wire Voltage Output
- Blue Wire Current Output
- Blue Wire Short
- Engine RPM
- Low Speed Brake Adjustment
- Transmission Temperature (Ford & GM early to mid 2000's models)

HD Truck Module Now Available for

Peterbilt
Freightliner
Kenworth
International
Volvo
and others.

(For DL-100, 200NE ONLY)



It's A Network Computer

It links with your tow vehicle's computer network and uses multiple data parameters in a proprietary way to create amazingly proportional trailer braking.

Proven Technology

DirecLink uses exactly the same computer network that controls your car, truck or SUV so you can count on this proven technology. By linking the data of your tow vehicle to your trailer brake system, both vehicles work seamlessly together.

Stop relying on brake controllers that use devices to sense what's happening. DirecLink gets its information direct from the source—your tow vehicle.

Real Time Data

DirecLink maintains complete situational awareness because it continuously monitors your tow vehicle's computer network. When you apply the brakes, it has a complete picture of what is happening. DirecLink creates precise braking curves to match the rapidly changing demands of your trailer brakes.

Electric Drum or Hydraulic

DirecLink works with electric drum brakes and electric-hydraulic brake actuators, automatically configuring to match your trailer's brake type.

DirecLink Brake Controller Works with:

1997 to Present
Ford
General Motors
Chrysler

2008 to Present
Nissan
Toyota
Mercedes-Benz
Volkswagen
BMW
Porsche
Land Rover

HD Truck Module Now Available for

Peterbilt
Kenworth
Volvo

Freightliner
International
and others.

(For DL-100, 200NE ONLY)