

User Guide of Cub TPMS Ball Sensor

FCC Statement

FCC Caution: Any changes or modifications not expressly approved by the party responsible for compliance could void the user's authority to operate this equipment.

This device complies with Part 15 of the FCC Rules. Operation is subject to the following two conditions:

- (1) This device may not cause harmful interference, and
- (2) This device must accept any interference received, including interference that may cause undesired operation.

IC Statement

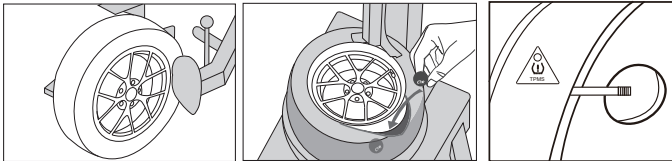
This device complies with Industry Canada license-exempt RSS standard(s). Operation is subject to the following two conditions:

- (1) This device may not cause interference, and
- (2) This device must accept any interference, including interference that may cause undesired operation of the device.

Caution

1. The sensor is designed to be used in commercial truck and bus, over 3.5 tons, with tubeless tires or trailer/Class A or C motorhome.
2. The sensor is NOT intended to be used where vehicle speed exceeds 120 km/h (75 mph).

Installation



1. Dismount the tire from the rim. If applicable, take out any existing TPMS sensors.
2. (For 433 MHz type) Before inserting the ball sensor into the tire, take note of the sensor ID (printed on the sensor surface) for reference.

If the manual sensor ID learning feature is available on the TPMS receiver, the sensor ID can be keyed-in to pair each sensor to the receiver.

If the TPMS receiver does NOT have the manual sensor ID learning feature, bring the receiver close to the wheel whose sensor ID you would like to pair and perform one of the following methods:

- Deflate the tire after inserting the sensor into the tire to wake the sensor
- Trigger the sensor to wake up by using the TPMS Sensor Activation Tool (aka Trigger Tool, sold separately).

(For 2.4 GHz type) Use the Cub Retrofit truck tool to program the correct wheel position ID to the sensor, then throw it into the corresponding tire. Please check the user manual of the product kit to know the relationship between wheel ID and tire location for different types of vehicle.

3. Clean the surface of the wheel near the valve stem with isopropyl alcohol and allow to dry completely. Write the wheel position ID with a paint marker pen on the TPMS sticker label included with the ball sensor. Adhere the sticker to the clean surface near the valve stem. This will serve as an indicator that a sensor is present in the wheel and of the wheel position ID.

Warranty

CUB warrants that the TPMS sensor shall be free from defects in workmanship and material during warranty period. CUB does not assume any liability in case of faulty, incorrect installation of the product, or by using other products causing TPMS sensor malfunction on the part of customer or user.



Limited Warranty

Tuson RV Brakes, LLC (Tuson) warrants the CUB TPMS Ball Sensor to be free of defects in material and workmanship for a period not to exceed TWO (2) years from the date of sale to the original consumer, or to the first retail purchaser of a trailer on which the CUB TPMS Ball Sensor is installed.

Original receipt(s) or other acceptable proof of purchase should be retained by the customer for verification of warranty date. THIS WARRANTY IS NOT TRANSFERABLE.

Tuson's obligations under this warranty shall be limited to crediting the account of a direct buying distributor or OEM trailer manufacturer replacing or repairing the CUB TPMS Ball Sensor products which are determined by Tuson to be defective in material or workmanship, within 60 days of receipt of such product by Tuson. Tuson reserves the right to request the product be returned intact, freight prepaid, PRIOR to processing any claim for warranty.

Warranty claim must be received by Tuson within 30 days of the discovery of the alleged defect, or within 30 days of the expiration of the warranty, whichever is earlier. Covered repairs or replacements will be made at Tuson's expense. Shipment of replacement product or repaired product by Tuson will be via best available ground shipment carrier. Shipments other than by best available ground shipment carrier, must be requested in writing and must be paid for in advance by the customer. Returned product that is found not to be defective, will be returned at sender's expense.

This Warranty shall not include any products which have been improperly installed, installed contrary to installation instructions provided with the product, altered, tampered with or changed in any way, or utilized in a manner not approved by Tuson. This Warranty shall not extend to any defects arising from abuse, misuse, accident, improper wiring, or negligence of the installer or the consumer.

EXCEPT AS EXPRESSLY SET FORTH ABOVE, NO OTHER WARRANTY, EXPRESS OR IMPLIED, AT LAW OR IN EQUITY, IS MADE BY TUSON CORPORATION IN RESPECT OF THE PRODUCT, INCLUDING WITHOUT LIMITATION ANY IMPLIED WARRANTY OF MERCHANTABILITY, FITNESS FOR A PARTICULAR PURPOSE OR ANY OTHER WARRANTY, AND ANY SUCH WARRANTIES ARE EXPRESSLY DISCLAIMED.

IN NO EVENT SHALL TUSON BE LIABLE TO PURCHASER OR ANY THIRD PARTY FOR ANY LOST PROFITS, CONSEQUENTIAL, EXEMPLARY, INDIRECT, PUNITIVE, INCIDENTAL, OR SPECIAL DAMAGES OR COSTS (INCLUDING ATTORNEY FEES), OR LOSS OF GOOD WILL RESULTING FROM ANY CLAIM (INCLUDING BUT NOT LIMITED TO ANY CAUSE OF ACTION SOUNDING IN CONTRACT, TORT, NEGLIGENCE, STRICT LIABILITY OR PRODUCT LIABILITY) REGARDING THIS AGREEMENT, EVEN IF THE COMPANY HAS BEEN ADVISED OF THE POSSIBILITY OF SUCH DAMAGES.

Some states do not allow the exclusion or limitation of implied warranties, incidental or consequential damages, so the above limitations or exclusions may not apply to you. This Warranty gives you specific rights. You may have other rights, which vary from state to state.

Customer Service

All product support is provided by the distributor that your product was purchased from. Please contact the distributor who originally sold you your Tuson product.

Or contact us:

Toll Free: 800-968-8766 Email: InfoRVBrakes@tuson.com

Tuson RV Brakes, LLC, 475 Bunker Court, Vernon Hills, IL 60061

www.tusonrvbrakes.com
