

KEY FEATURES

Performance

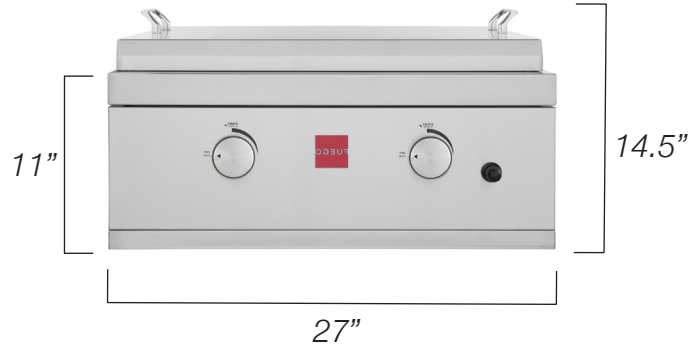
- Two U Shaped 304 SS Burners
- Combined 40,000 BTU/hr
- 400 sq. in. griddle surface
- Overall temperatures range from 250F to 650F
- Heats up to 400F in just 5 minutes

Features & Benefits

- All 304 Stainless Steel Construction
- LED Backlit Control Knobs (Battery Operated)
- Fully Assembled Packaging
- Completely Welded Firebox
- Push Button Electronic Ignition
- Easy-To-Clean Hidden Residue Tray
- Heavy Duty 8mm Solid 304SS Cooking Griddle
- Easy To Remove Griddle Top Cover
- NG and LP Options Available
- Limited Lifetime Warranty

Optional Accessories

- FSAOC3 - Outdoor Cover (2 Color Choices)



Sleek Front Panel Design



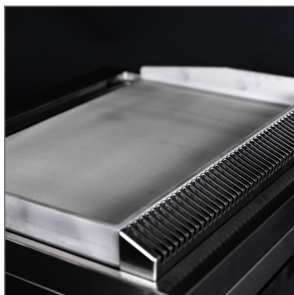
Heavy Duty 8mm Griddle



Premium Burners



LED Backlit Knobs



Rear Top Vents



Meat, Veggies & More



Griddle Top Cover



Easy Mount Side Brackets



TECHNICAL SPECS

Dimensions:	27" W 24" D 23" H (Lid Closed) 27" W 29" D 36" H (Lid Open)
Package Dimensions:	34" W 30" D 32" H
Package Weight:	119 Pounds
Gas Requirements:	40,000 BTU/hr Natural Gas and Propane Options
Grill Type:	Built-In
Clearance To Combustibles:	Sides: 24" Rear: 24"
Cutout Dimensions	Width: 27 3/8" (A) Depth: 23 7/8" (B) Height: 11 1/8" (C)
Island Dimensions (Recommended)	Depth: 30" (D) Height: 36" (E)
Mounting Brackets	Each built-in grill comes with a set of mounting brackets that allows the unit to suspend on top of the countertop opening for a flush mount look and feel.

