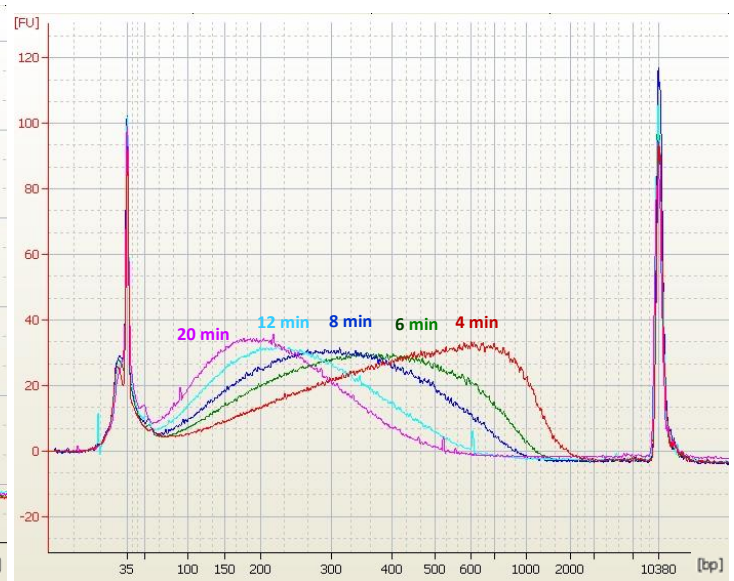
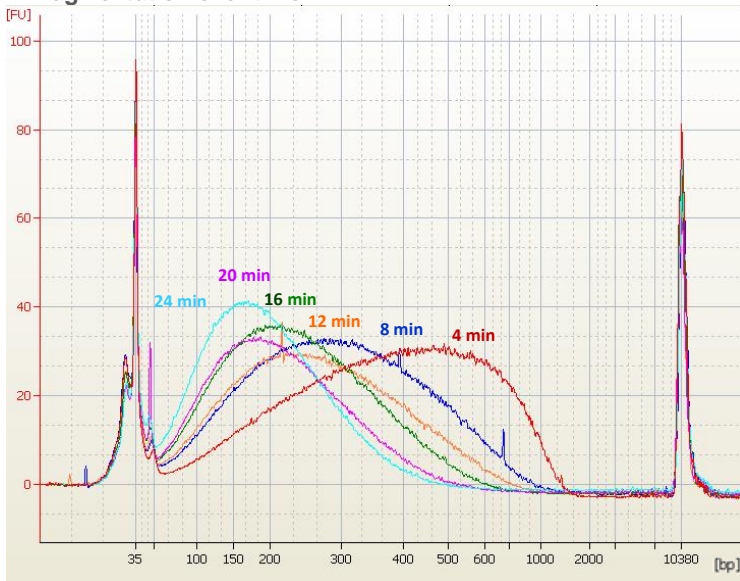


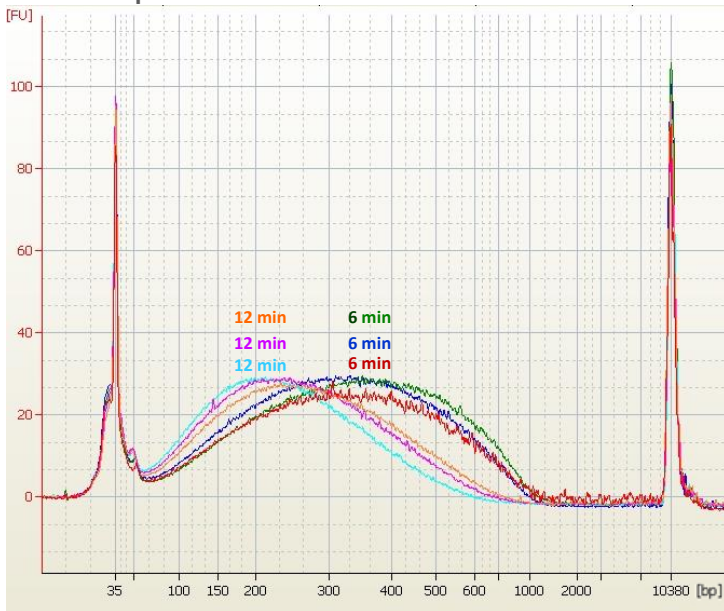
Bacterial Genomic DNA Shearing

Example protocols and results are based on customer feedback.

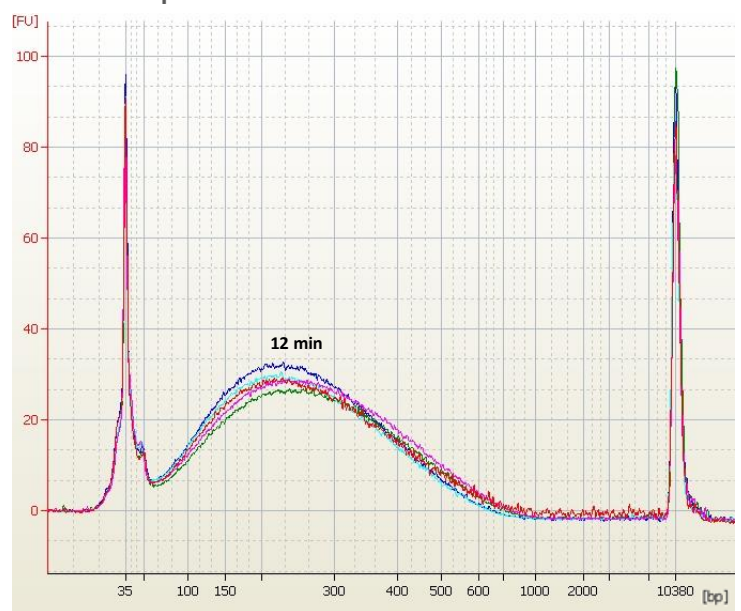
Fragmentation over time



E. coli Triplicates



E. coli 5 Replicates



Protocol Information

Cell Type: *E. coli* genomic DNA

Total Sample Volume: 200ul (250ng of DNA) in Brand Tech 0.5 ml tubes

Sonicator Amplitude Setting: 20%

Sonication Pulse Rate: 15 seconds On, 15 seconds Off

Total Sonication On Time: As indicated on each bio-analyzer image

Sample Process Temperature: 3°C

Customer Notes: The size distributions were consistently moving towards smaller sizes and the replicate-to-replicate reproducibility was very good

E. coli 6 Minute and 12 Minute 5 Replicates

