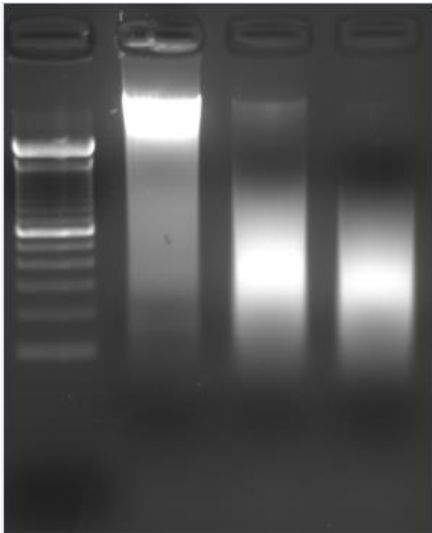


Bacterial Genomic DNA Shearing

Example protocols and results are based on customer feedback.



Sonication Conditions:

Lane 1 – unsheared

Lane 2 – 5min Total Sonication

Lane 3 – 10min Total Sonication

**Samples run on 1% agarose gel, 100bp ladder.*

Protocol Information

Cell Type: Bacterial Genomic DNA, 1ug/ml

Total Sample Volume: 500ul

Sonicator Amplitude Setting: 60%

Sonication Pulse Rate: 10 seconds On, 10 seconds Off

Total Sonication On Time: 5min or 10min. Desired fragment size dependent. See resulting gel image above

Sample Process Temperature: 3°C

Customer notes:

-Sonicated in 1.5ml microcentrifuge tube – polypropylene (commercially available).

-Sample was in TE buffer

-We use Illumina for all sequencing. NEB next gen kits work well with sonicated DNA using the Q800R.

-System worked very well.