

TUFFBLOCK

SPECIFICATION GUIDE

PRODUCT DESCRIPTION

TuffBlock is an ultra-lightweight, 100% recycled polymer block used to create an instant foundation system for projects such as low profile, raised, variable height decks/patios, wooden bases to hold sheds, and hybrid footing alternatives.

STANDARDS

Compliance with the following codes and per ICC-ES Evaluation Report (ESR-4628):

- ✓ 2021 and 2018 International Building Code (IBC)
- ✓ 2021 and 2018 International Residential Code (IRC)

SPECIFICATION

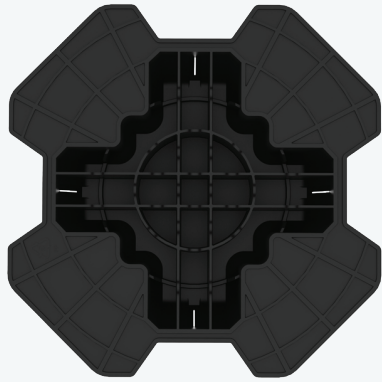
MODEL NAME: Tuffblock Instant Foundation System

MODEL NUMBER: 1401001

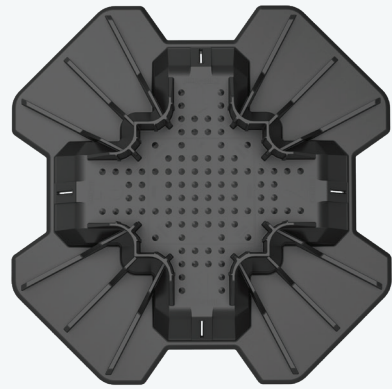
DIMENSIONS: 300mm W x 90mm H x 300mm L (11 13/16" Width x 3 35/64" Height x 11 13/16" Length)

WEIGHT: 680grams (1.49 oz)

MATERIAL: 100% recycled polypropylene (PP)



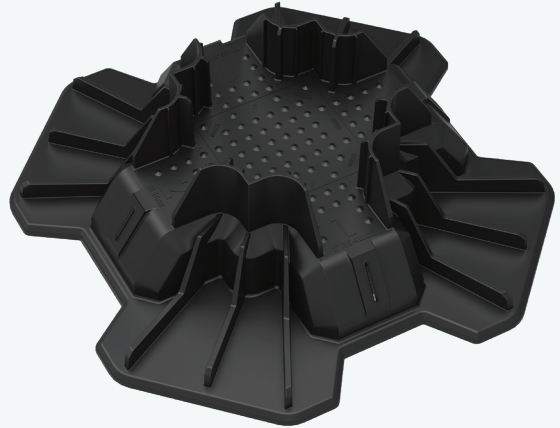
Bottom View



Top View



Side View



Iso View

TUFFBLOCK

SPECIFICATION GUIDE

COMPARISON CHART

The following chart shows the comparison of TuffBlock features in relation to Concrete Deck Blocks.

FEATURES	TUFFBLOCK	CONCRETE DECK BLOCKS
Lightweight	✓ 680g (2lbs)	✗ 18 kg (40lbs)
Load Test Rated	✓ 770kg (1770lbs)	✗
ICC Certified	✓ AC49 ICC Approved	✗
Stackability	✓ + fits 304/pallet	✗ fits 64/pallet
Versatile Slot Sizes	✓	✗ requires chiselling
Warranty	✓ 25 Years	✗ 10 Years
Lowest Profile	✓	✗
Environmentally Friendly	✓ 100% recycled polymer	✗
Circular Product Design	✓	✗

TUFFBLOCK FEATURES

Features specific to TuffBlock that Concrete Deck Blocks don't have.



POSTS
Accepts Posts from 90-100mm



JOISTS + BEARERS
Accepts Joists & Bearers from 35-47mm



LIGHTWEIGHT
Each TuffBlock Weights only 680 grams



STRONG
Each TuffBlock can support 770kg



DETERS PESTS
Including Termites, Ants, Silverfish & more



LONG LASTING
Made from UV Stabilised Polyolefin



WATER CHANNELS
Designed to prevent moisture build up



ECO FRIENDLY
100% Recycled and Recyclable