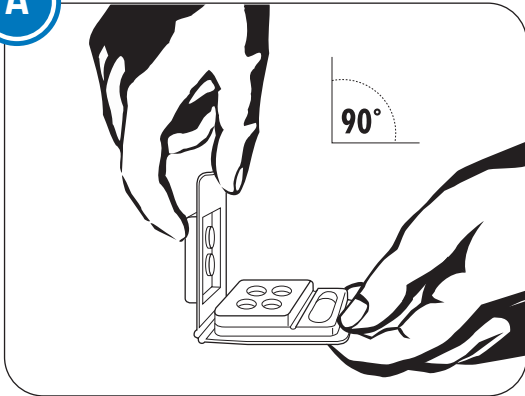


Instructions for Use PureBond Dispenser®

A



Hold dispenser with lid at 90° to base.

If lid does not fully lock upon first attempt, adjust hinge as shown in figures A-C.

The Pure Bond Dispenser is designed to hold bonding agents, composites and sealants in four storage wells.

The large oval well can also be used for this purpose, and is ideal for storing applicator sponges, cotton balls and finishing burs.

Materials can be placed for extended storage with the lid closed. The light lock lid prevents any light from contaminating agents.

The narrow channels are designed to store applicator brushes prior to, or during procedures.

- Self-contained light lock lid protects against light contamination of photosensitive materials.

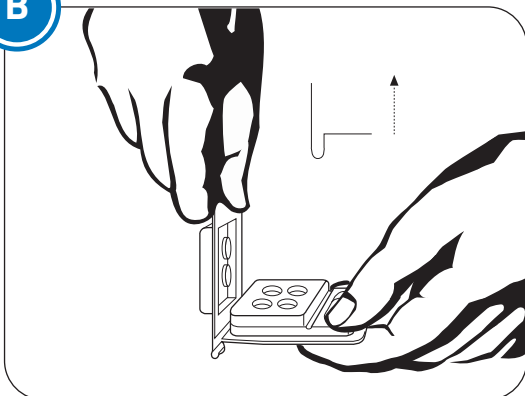
- Durable molded resin is compatible with dental composites, bonding agents and primers.

- Single use helps reduce cross contamination.

- Safe storage of materials before use.

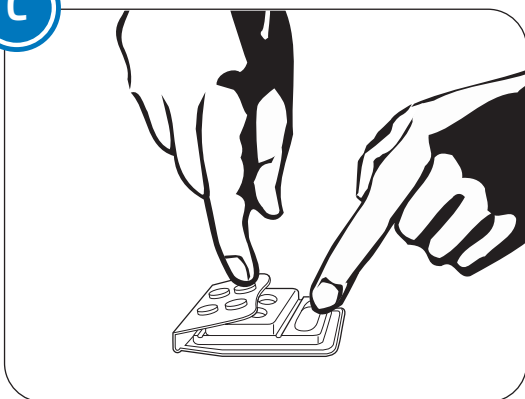
- Properly dispose of following local regulations.

B



Press base upward to form a "U" with base and lid.

C



Fold lid over to engage lock to wells.

2 DO NOT REUSE

Always use a new single use Pure Bond Dispenser for each procedure. Do **not** autoclave the dispenser because they will deform and or melt. Dispose of after each use. To disinfect, always use an FDA approved High Level Disinfectant and follow the manufacturer's instructions.

PURE BOND® DISPENSERS

Please read before using the Pure Bond Dispensers.



Jordco, Incorporated

Beaverton, Oregon USA 97006

503/531-3904 TEL, 503/531-3757 FAX, 800/752-2812 toll free USA

www.jordco.com



1



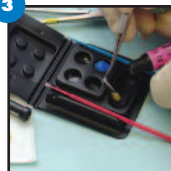
With the Pure Bond Dispenser lid open, bonding agents can be conveniently placed into any of five wells. Bonding agents can be pre-loaded prior to each procedure helping reduce contamination of bonding agent syringes and small bottles.

2



Avoid cross contamination of syringes by dispensing etchants directly into the well.

3



The larger utility well is ideal for holding composites, cotton balls or sponges. Micro-tip brushes can be stored in the channels located to the side of the wells.

4



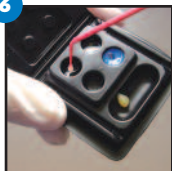
After expensive light sensitive bonding agents have been loaded, the lid can be gently closed to protect them from light contamination until use.

5



Save valuable time by pre-loading several Pure Bond Dispensers earlier in the day prior to bonding appointments.

6



During the procedure, the lid is opened and the assistant can pass the Pure Bond Dispenser to the doctor for use. The lid can be closed between applications.