

## Library Single Swing Arm Wall Light Installation & Care Sheet



### Safety Information - Read Before Installation

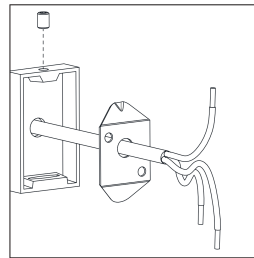
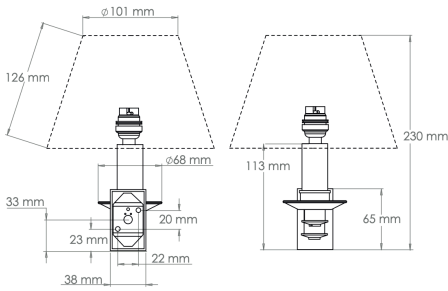
After choosing a suitable location that meets all the requirements of the safety information install the unit following the steps overleaf.

- Carefully unpack all parts and check for damage or missing parts before commencing installation.
- Installation of this product must be carried out by a qualified electrician.
- Luminaire is for indoor use only
- Disconnect the electrical supply before installation. Switch off the electricity at the fuse box by removing the relevant fuse or switching off the circuit breaker before proceeding with the installation.
- Install should be carried out in accordance with the wiring regulations and building codes applicable to the country of installation.
- Before making any fixing hole(s), check that there are no obstructions hidden beneath the mounting surface such as pipes or cables.
- Ensure that the support for the light is of sufficient structural strength and that any fixing screws do not interfere with the connecting cables.
- The unit can get very hot during use. Switch the product off and allow to cool before handling or changing bulbs.
- Ensure adequate ventilation space is allowed between the unit and any object above, in front or to either side of the unit. Suggested minimum space is 0.5m above and 0.5m on all sides.
- To prevent tarnishing, it is advisable to wear gloves at all times when handling the product.
- Mains connector must be a lever slicing connector; with a minimum of 3 terminals; rated to 240v 16A.

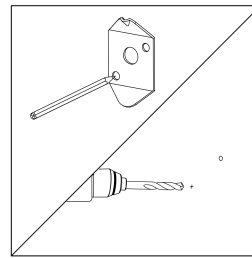
### Care Instructions - Read Before Installation

- This box contains fragile and valuable goods that have been carefully packed. Please take utmost care in unpacking the parcel as damage can occur in this process.
- Please be sure you have received the correct number of boxes i.e. 1 of 2, 2 of 2 etc.
- Under no circumstances should the product be lifted out by the neck or light fitting.
- If you have received any damaged goods or are missing any part of your order, please contact our sales office as soon as possible.

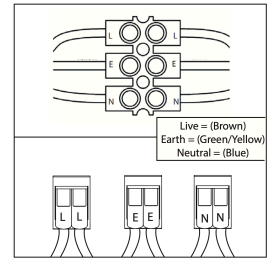
<b>Dimensions</b>	113mm High - 180mm Wide - 191mm deep
<b>Weight</b>	Approx 0.9kg
<b>Material</b>	Cast Brass
<b>Lamp Holder</b>	B22 230V Mains dimmable - 60W Max
<b>Manufactured</b>	United Kingdom



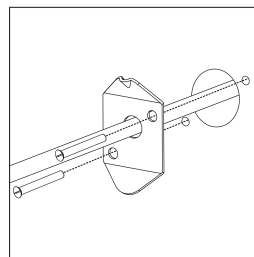
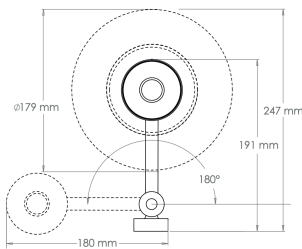
1. Straighten the product wiring, remove the grub screw and the backplate from the product.



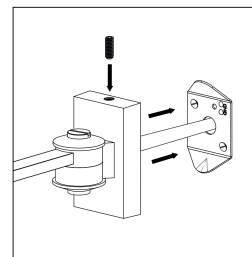
2. Using the back plate as a guide, mark & drill mounting holes into the mounting surface.



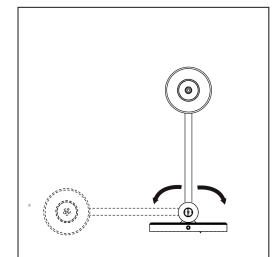
3. Having identified the household wiring, connect the building supply and the product wires together in the terminal block as shown above.



4. Attach the backplate onto the wall using suitable fixings.



5. Reattach the product to the backplate by engaging the lower tabs, align with top ledge of backplate and secure with the grub screw.



6. Manoeuvre the arm into the desired position.

### Cleaning Instructions

Brass - all types: Use a soft dry lint free cloth

Bronze, Nickel, Silver & Chrome: Use a dry cloth only, no chemical cleaners

Glass: We recommend using a strong alcohol such as isopropyl alcohol. Note: some modern cleaning solutions can contain chemicals that can leave a greasy film on glass.

Gilt Wood: Use a dry cloth only

Ceramic: Use a damp cloth only

Wood: Wax polish i.e. Antique wax

Alabaster: Dust with a soft brush or a clean dry cloth. Avoid water or water-based cleaners. Any marks that cannot be removed by dusting must be cleaned by a specialist.

Lacquered Furniture: Furniture polish

Crystal: Damp cloth

Card/Laminated Shades: Use a Feather duster only Silk Shades: Gently tap to lift dust

Needlework: Dry-clean

-Any decorative parts made from other materials must be removed and cleaned separately to avoid damage - e.g. alabaster.