

England's Stove Works, Inc.

Pellet, Corn, Gas and Wood Stoves

P.O. Box 206 Monroe, VA 24574

www.englishstoves.com

Phone: (800) 516-3636

Fax: (434) 929-4810

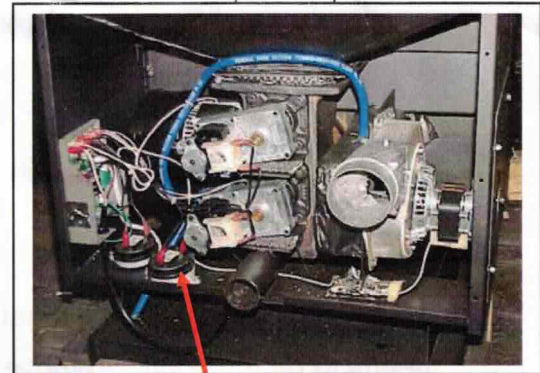
REPLACING THE VACUUM SWITCH (pre-2006)

To change out a Vacuum Switch for improved performance on pre-2006 models, simply perform the following steps:

Ill. 1

1. First, remove the rear access panel from your pellet unit; this may be done using a 5/16" socket or wrench.

2. Examine the labels on each of the Vacuum Switches that are fastened to the bottom of the unit. You will want to leave the switch marked .17" alone. (NOTE: If you have two .17" switches and one of them has failed, you will simply use these instructions to replace the failed .17" switch).



3. Remove the two screws that fasten the switch that is closest to the Auger Motors (this may be done with a 5/16" socket or wrench). The switch that you are removing will have either .60" or 1.10" on its label. Remove the Vacuum Hose from the switch, and also remove the two wires that are attached to the switch.

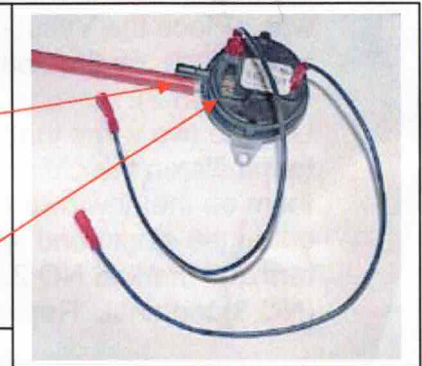
IMPORTANT: Some models are arranged like this and some are slightly different. Be sure to replace the switch closest to the Auger Motors (marked .60" or 1.10"). You will have two switches marked .17" when you are finished.

4. Replace the old (.60" or 1.10") switch with the new replacement (.17") switch. Using the two screws that held the old switch, fasten the new switch where the old switch was. Place the Vacuum Hose on the new switch, on the bottom nipple (see Illustration 2). Use the two wires that went to the two terminals on the old switch and place them on the new switch (see Illustration

Replace existing .60" or 1.10" with new .17" switch

Place Vacuum Hose on bottom nipple (top nipple will remain open).

Place wires on C1 and NO2 terminals (NC3 will remain vacant).



Ill. 2

2). One wire will go on the single end terminal (C1), and the other wire will go on the terminal marked NO 2...no wire will go on the opposite (NC 3) terminal. **NOTE:** At this point you should have two .17" switches in your stove, and no .60" or 1.10" switch. Replace the rear access panel onto your pellet unit.

IMPORTANT: For these switches to work correctly, the Vacuum Hoses must be firmly attached, and the wires (the silver wire "heads" inside the plastic jackets) must be firmly in place on the terminals at the switch and the Control Board end.

WARNING: STOVE MUST BE OUT (NO FIRE), COOLED DOWN, AND UNPLUGGED BEFORE ANY MAINTENANCE. ALWAYS FOLLOW ALL CODES.

WARNING: ELECTRICAL SHOCK CAN OCCUR IF UNIT IS NOT UNPLUGGED.

Technical Support: (800) 245-6489
Web Site: www.englishstoves.com