

Green Mountain 40 - 8640 Baffle Replacement

Kit #96-76400

INCLUDED IN KIT:

2ea. 3070-020: Ceramic Baffles

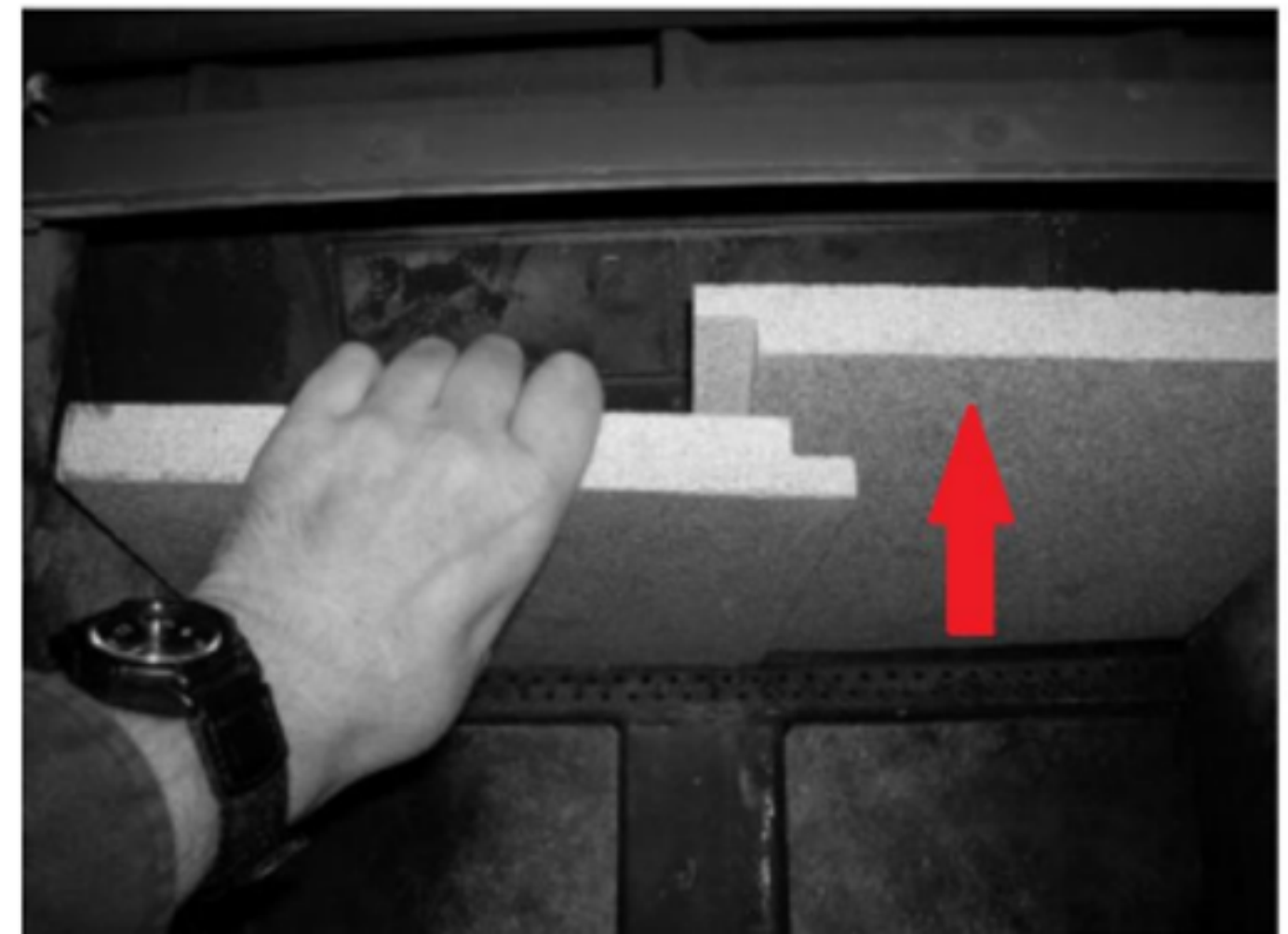
TOOLS REQUIRED:

Safety Glasses
Work Gloves

BEFORE YOU BEGIN: Check to make sure you have all the components listed in the kit. Read the instructions all the way through. Always work on a cool stove.

PROCEDURE:

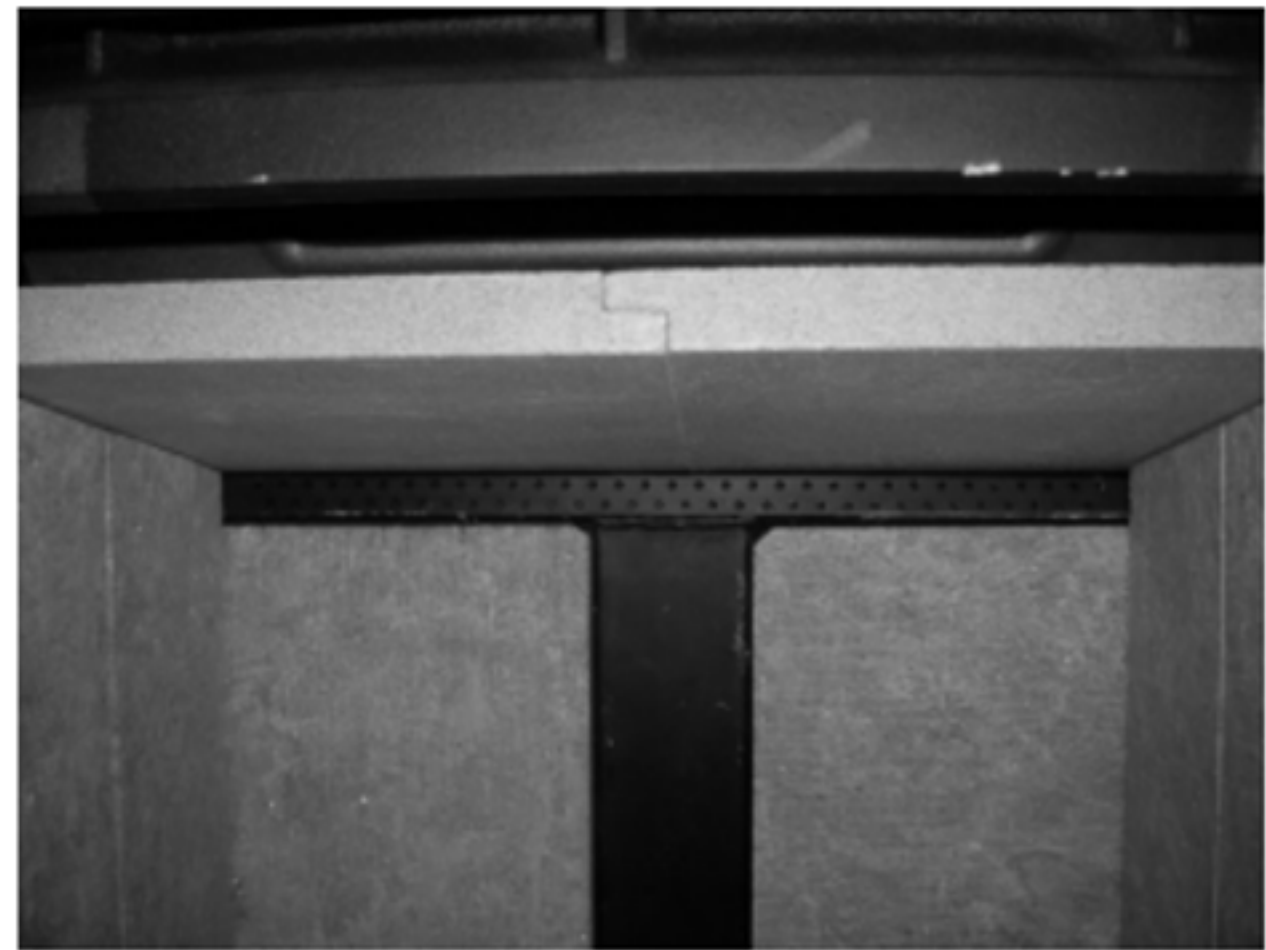
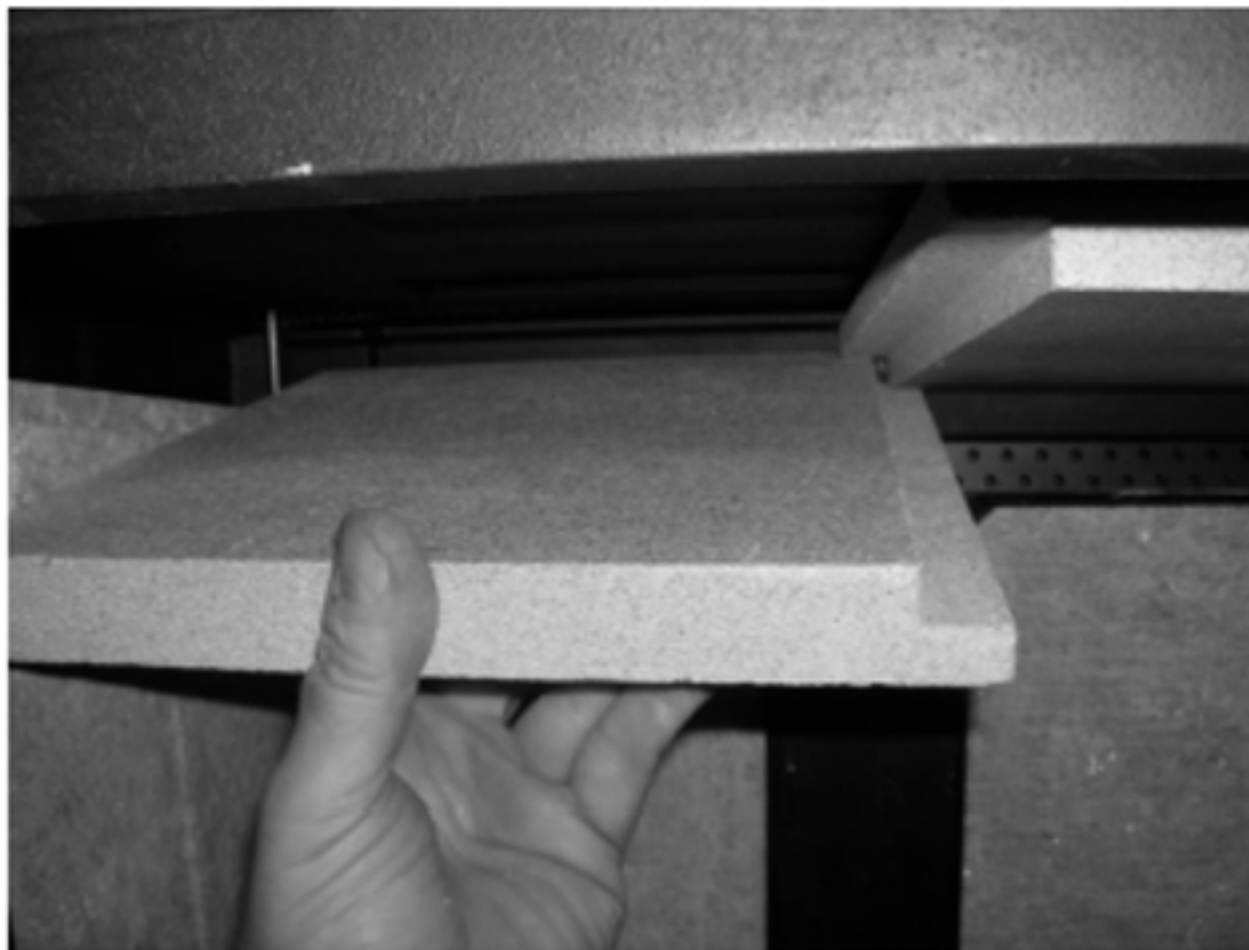
1. Remove the metal baffle protector by sliding it to the left or right, and then rotating it towards you.
2. Lift up on the right side baffle and gently pull the left side baffle down and out of the stove.
3. Remove the right side baffle.
4. Set the new right side baffle in place with the notched edge positioned toward the center of the firebox.
5. While gently lifting up on the notched side of the right side baffle, position the new left side baffle in the stove so that the notched edges overlap and can lay snugly together.
6. Lower the now mated baffles into their final position and reinstall the metal baffle protector as it was removed in step 1.



- 6) Place the right baffle into the stove. Push it fully to the right so that it sits on the cutout in the side stone.



- 7) While lifting the rear portion of the right baffle, insert the left baffle by engaging the rear and tipping up the front. **IMPORTANT** – do not force the pieces as they could break or crack – they will fit together without forcing them into place. The two baffles will overlap at the center joint and sit in the grooves of the left and right stones.



- 8) Place the baffle guard over the front edge of the baffles. Push it as far back as it will go, onto the baffle plates.



- 9) Place the bottom refractory stones into the stove.

