

Set Up Instructions

WLTCCM

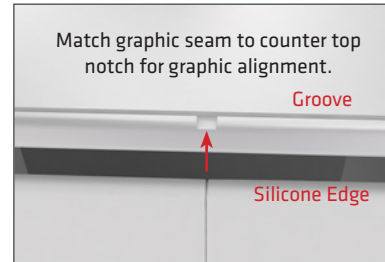
Step 1: Open bag and place display with countertop up. Remove countertop from display. Twist open the plastic cap(s) to reveal air valve(s).



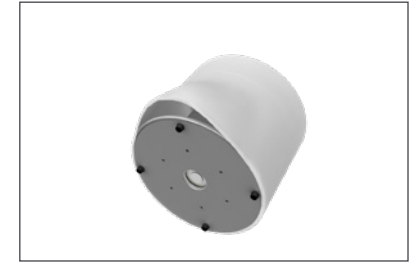
Step 2: Connect air pump to valve(s). **Important! Do not twist when inserting and removing air pump.** Pump up the inner core(s) to about 80% capacity.



Step 3: Graphic install. Match the seam of graphic with the notch in the top counter top. Push silicone edge of graphic into the groove



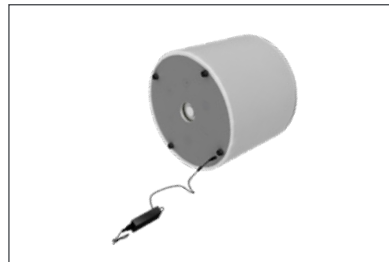
on top of the counter board until securely fastened all around. **Step 4:** Repeat this process to install graphic on bottom of counter.



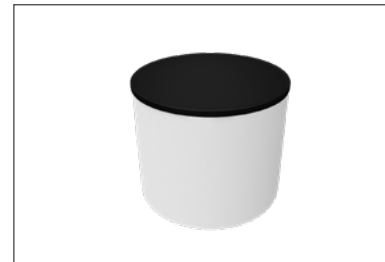
Step 5: Insert air pump and pump inner core until fabric graphic is tight. Note: Do not leave unattended and overfill.



Step 6: Connect Power Supply or optional Rechargeable Lithium-Ion Battery.



Step 7: Add countertop back onto display. (if using the power cord, plug into outlet to light counter.)



Step 8: Repacking. Deflate the counter and leave the fabric graphic and countertop attached to the display.



WARNING: To avoid breaking or damaging the top or bottom edge groove of your display, lower gently onto ground when assembling and disassembling. Do not drop counter or tip over any time.



AIR LOSS THROUGH VALVE: The most common reason for loss of air is the valve has not been properly closed or was accidentally opened with the pump nozzle during inflation. To close air valve press down on valve and turn left or right to closed position. To open air valve and deflate the counter, press down on valve and hold. To keep open, press down and turn valve left or right to open position.