

HOW TO MAKE BADGES AND PATCHES

Video at: https://www.youtube.com/watch?v=X_GcjsdvPCo



You will need: **Twill fabric**, **Ultra Solvy**, **Spray Adhesive** and **Thermofix** and **Teflon Sheet** (if you will be making Iron On Patches), *optional **Mylar Sheets***.

Tackle Twill - we provide a tightly woven poly-cotton patch material which is backed with a non-woven material for additional stability. We stock Yellow, Red, Blue, Green, White and Black. Size is one yard by 30" wide.

Part numbers: TX42361369-YELLOW, TX42361147-RED, TX42361535-BLUE, TX42361051- GREEN, TX42361002-WHITE, TX42361005-BLACK

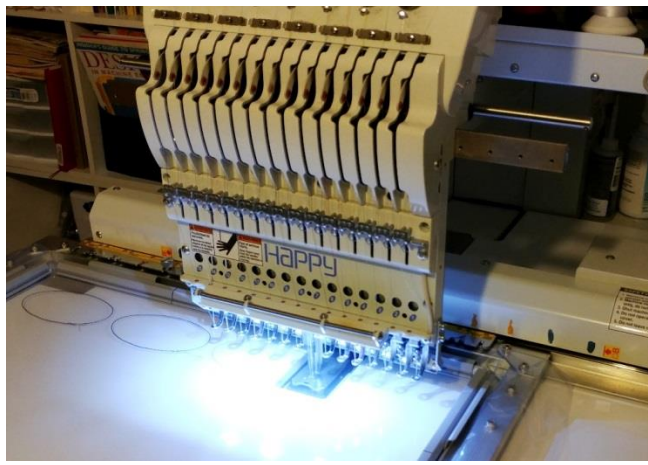
Spray Adhesive - we carry a variety of adhesives to temporary bond patch material to the Ultra-Solvly.
Part numbers: KK100, 505 large, 505 small and 1076

Ultra Solvy - is a 80 mil thick dissolvable backing that is ideal for applique, patches and free standing lace, it disappears after exposure to water. Just hoop the Ultra-Solvly in your hoop and place the item to be embroidered on the solvy, stitch the design and pop the item out of the solvy. Available in 20" x 16 yard roll. **Part number:** TX40425

Thermofix - to create a patch that can be directly attached to a garment with an iron or heat press, we have available the Thermofix polyamide low melt Heat Seal fusible which must be applied to the back side of the finished patch. It permanently bonds patches and applique materials to your projects. **Part numbers:** TX412010 - 16" x 10 yard continuous roll, TX41225 - 16" x 25 yard continuous roll

Teflon sheet- Non-Stick 16" x 20" Teflon Sheets for use with heat press or hot iron. Curing printed t-shirts or applying fusible webs to garments to prevent adhesive from sticking. **Part number:** TS3MM16X20

Mylar sheet- this is optional addition. It is a shiny thin film that can provide extra color, reflection and sparkle to the project. **Part Numbers:** MYLAR-BLACK, MYLAR-GOLD, MYLAR OPALESCENT, MYLAR-RED AND MYLAR-SILVER, all supplied in 18" X 20" Sheets.



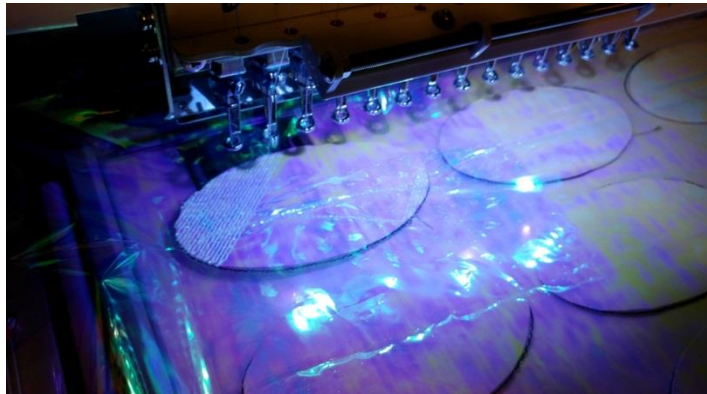
Step 1: Begin by hooping Ultra Solvy in a size that accommodates the number of patches you want.

Step 2: Embroider a placement stitch for the patches. (photo)

Step 3: Pre- cut the twill in the size, quantity and dimensions you need.

Step 4: Spray the Pre-Cut Twill with Temporary Spray Adhesive –a light spritz is all you need to keep the fabric from shifting. Place inside the Placement Stitch and press lightly to adhere.

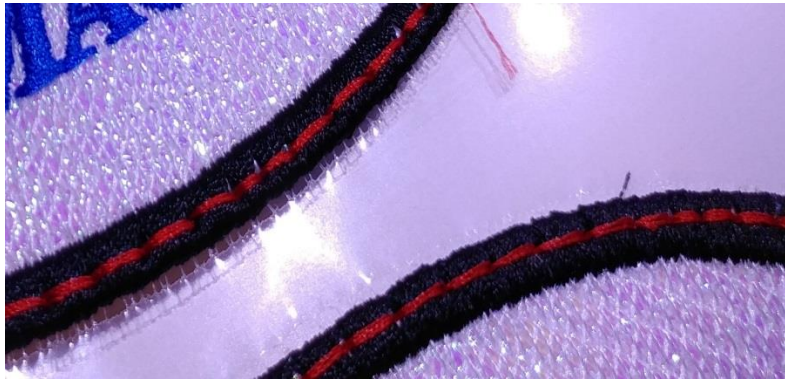
Step 5: * Optional* For extra Bling – Lay a sheet of Opalescent Mylar over the Twill. Otherwise skip to Step 7.



Step 6: *Optional – If you are using Mylar* Stitch an open weave, widely spaced Knock-down Stitch over the Mylar and Twill. This secures the Mylar but allows it to shine through and add sparkle to the Twill in the background.(photo) Otherwise skip to Step 7.



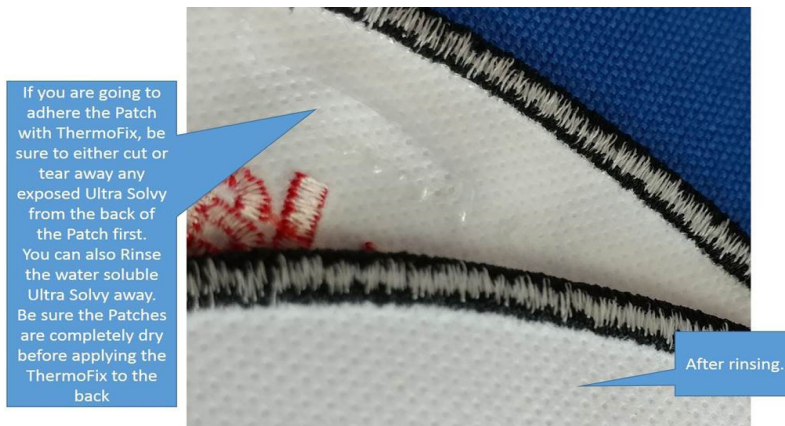
Step 7: Stitch the Satin Stitch Border that finishes the edges of the patches(photo).



Tip: You can add a Long Running Stitch on top of the center of the Satin Stitch. This is only a decorative element but can help secure the Satin Stitch and makes it less likely to snag. You can use a contrasting color for an additional design element or use the same color as the Satin Stitch and it will disappear and simply secure the edges(photo)

Step 8: Stitch the center elements of the Patch – logo, text, decorative designs. The edges are secured so the stitching in the center doesn't pull the edges out of place and cause the edges not to align properly.

Step 9: Break the edges of the Patches free from the Ultra Solvy and apply the Patch to the garment by sewing.



Step 9a: If making Iron On Patches please be sure to remove ALL excess Ultra Solvy by immersing patch in water until it dissolves. Dry the Patch after Ultra Solvy is gone, then:

Step 10: Apply Thermofix by cutting a piece of the Thermofix the same size as the patch, place this on the back of the patch. Place your Teflon sheet next so it's between the iron or heat press and the Thermofix.

Step 11: Fuse the Thermofix directly to the back of the finished patch. With a heat press, apply heat source to the TOP of the finished patch. Temperature should be 140°C (285°F), for about 10-15 seconds, medium pressure of 45 psi. With a regular iron, use a high heat setting for about 15 seconds, applying the iron to the TOP of the finished patch, pressing firmly. Trim any excess after cooling if needed.

Step 12: Fuse the patch on to the garment (when ready) -Place the embroidered patch onto the desired area. With Heat press, 140°C (285°F) for about 10- 15 seconds, medium pressure of 45 psi. With regular iron – use a high heat setting for about 15 seconds, pressing firmly.

Tip: For maximum bond strength, iron the garment on both sides/ front and back.

Tip: Full bond strength will be achieved after 48 hours.

TEXMAC DIRECT

www.texmacdirect.com Contact Information:

1-855-373-6929 Parts@texmacusa.com