



Vantage Vector®

The power of video and radar sensor fusion

Benefits of the Vantage Vector



Dilemma zone detection



Enhanced data information includes vehicle volume, speed and distance



Single-sensor for stop bar and advanced detection



The proven power of video... and more

Vantage Vector® is an all-in-one vehicle detection sensor with a wide range of capabilities: stop bar detection, advanced-zone detection and sensing that enables advanced safety and adaptive control applications.

Vector includes all of the proven benefits of Iteris video detection:

- High Accuracy
- High-resolution video image for remote viewing
- No trenching or pavement cutting for installation
- SmartCycle® technology for bicycle differentiation
- PedTrax™ technology for pedestrian tracking
- VantageLive!™ compatibility

Enhanced dilemma-zone precision

Vantage Vector offers high precision for dilemma zone detection by integrating the video field-of-view with radar sensing. Enhanced information includes the number of vehicles, speed, and distance in user configurable zones, that can be used for special applications.

Extended range for higher speed approaches

The extended range of the advanced zone includes enhanced count, speed, and occupancy (CSO) measurements, where data from advanced detection zones is desired.

Vantage Vector®

The power of video and radar sensor fusion

More Benefits

- Performs in the most challenging lighting conditions
- Advanced self-cleaning camera lens ensures lower maintenance
- Provides for advanced intersection safety features such as Dilemma Zone and all Red Protect with compatible signal controllers
- Advanced radar detection to over 500 feet from sensor head
- Available for both Edge 2 and Vantage Next platforms

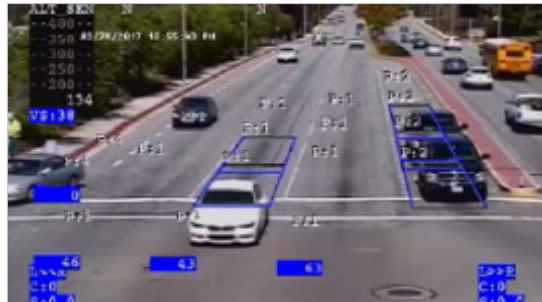
SPECIFICATIONS

Vector Sensor

Image Sensor	1/4" CCD
	380,000 effective pixels
	550 Horizontal TV lines
	> 50 dB S/N ratio
	1.0 lux minimum illumination
	2D/3D Noise Reduction
	Automatic white balance
	1 Vpp (sync negative)
	I2x optical zoom lens
	f=3.7 mm (wide) to 44.4 mm (tele)
Lens Heater	Indium Tin Oxide, proportional power
Radar	Frequency - 24GHz (K-band)
	Accuracy - Speed 0 to 150 mph ± 1 mph (240 kph ± 1.5 kph)
	Tracked objects - Up to 20
	Detection - Across 4 lanes of traffic
Physical	Weight - 10lbs (4.55 kg)
	Size - 14"H x 15"W x 17"D (35.6cm x 38.1 cm x 43.2 cm)
	EPA - Less than 1.5 sq.
	IP67 rated enclosure
Operating Temp.	-35°F to +165°F (-37°C to +74°C)
Humidity	0 - 100% RH
Vibration	0.5G, 3 axes, 5-30Hz
Shock	10G in all 3 axes
Regulatory	FCC part 15, Class A NEMA TS-2 compliant
Communications	Via data embedded on video signal
Warranty	3 years limited warranty

Vector on Edge 2 Platform

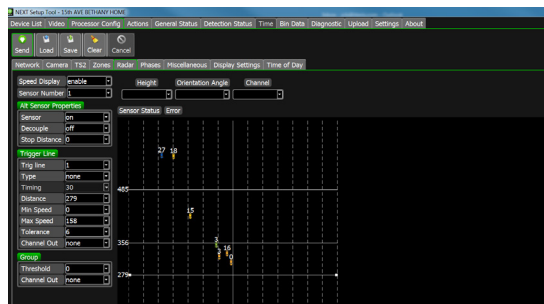
Electrical	110/220 VAC, 10W (typical), 20W (peak)
Radar	Tracked Objects - up to 20
Comms	Via data embedded on video signal
Connections	Terminal Block
Setup/Config	Mouse & Monitor or VRAS
Processor	Edge2



Vector on Edge2 Platform

Vector on Next Platform

Electrical	48VDC 10W(typical), 20W (peak)
Radar	Tracked Objects - up to 60
Comms	RS485
Connections	Terminal Block or RJ45 option
Setup/Config	Next Setup Tool
Processor	Next with CCU



Vector on Next Platform (Setup Tool)



Copyright © 2018 Iteris, Inc. All rights reserved.

NOTICE: Iteris, Inc. reserves the right to change product specifications without notice. Information furnished is for informational purposes only. This information may not be complete or the latest revision. For the most up-to-date information, please contact Iteris, Inc.

iteris®