

An aerial night view of a city skyline, likely New York City, featuring prominent skyscrapers like the Empire State Building and the Freedom Tower. The image is overlaid with a white geometric network of lines and glowing nodes, suggesting a digital or data-driven theme. The city lights are reflected in the water in the background.

SIEMENS

Ingenuity for life

TACTICS™

**Central Advanced Traffic
Management System**

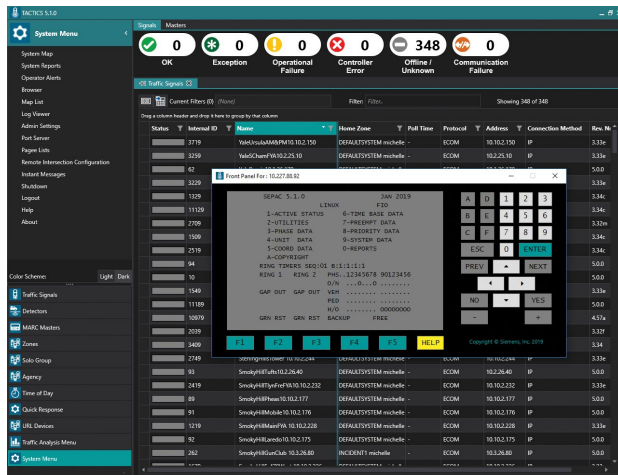
usa.siemens.com/intelligenttraffic

At a glance

TACTICS™ brings the latest technology for advanced traffic management for smart cities of today and the future

TACTICS™ 5 provides a powerful, scalable, resilient and easy-to-use traffic management system with a modern user interface that allows the user to

- Manage on-street traffic equipment through a single user interface
- Simplify configuration download/upload powered by YAML technology
- Monitor the overall system status through a summary dashboard
- Configure devices remotely
- Download controller software to field devices remotely
- Analyze the data by running reports and creating diagrams
- Create strategies and quick responses to react to pre-defined events automatically
- Easily search and quickly filter information throughout the system
- Quickly manage intersections using a map view
- Logically group controllers independent of signal control grouping



TACTICS™ Front Panel



Build resilience with automated traffic control via Quick Response

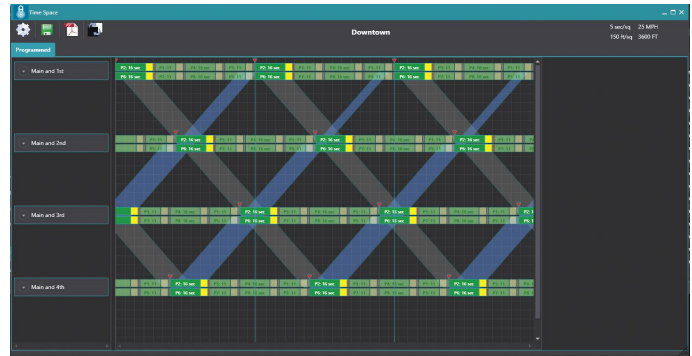
TACTICS™ 5 offers support for the creation and management of triggers and actions for pre-defined events through the Quick Response module. These configurable responses add a level of automation to the system that can help in planned and unforeseen situations, increasing resilience and adding robustness when managing traffic.

Installation made easy with a redesigned installer

The latest TACTICS™ has a completely redesigned installer with simplified user interface that allows engineers to install and upgrade TACTICS onto servers, workstations and standalone systems quickly using a small number of button clicks. The installer also provides support for patch updates to be deployed without having to reinstall TACTICS™ every time, making it easy for new features and patches to be deployed as they become available.

Seamless integration with Siemens SEPAC 5

The system is backwards compatible with older versions of SEPAC and offers full support to the latest Siemens SEPAC 5 traffic controller software, allowing users to benefit from traffic control features that include system banks, import/export facilities for configuration data and NTCIP compliance.



Time Space

Status	Name	Plan	Mode	Ex. Mode	Act. Zone	Home Zone	Authority	Comm.	MARC	System	Control
OK	Anaheim	1/1/1	Pattern	Normal	California Zone	California Zone	Default	Online	-	Local	Zone
OK	Chicago	1/1/1	Pattern	Normal	Illinois Zone	Illinois Zone	Default	Online	-	Local	Zone
OK	Cypress	1/1/1	Pattern	Normal	California Zone	California Zone	Default	Online	-	Local	Zone
OK	Los Angeles	1/1/1	Pattern	Normal	California Zone	California Zone	Default	Online	-	Local	Zone
OK	W 6th Ave and Goodhope St	1/1/1	Pattern	Normal	Austin Downtown	Austin Downtown	Default	Online	-	Local	Zone
OK	W 6th St and M Lamar Blvd	1/1/1	Pattern	Normal	Austin Downtown	Austin Downtown	Default	Online	-	Local	Zone
OK	W 6th St and West Ave	1/1/1	Pattern	Normal	Austin Downtown	Austin Downtown	Default	Online	-	Local	Zone
OK	Evansville	1/1/1	Standby	Normal	Internal Standby	Illinois Zone	System Admin	Online	-	Local	Zone
OK	Orange	1/1/1	Standby	Normal	Internal Standby	California Zone	System Admin	Online	-	Local	Zone

List Groups

TACTICS™ View

Designed for portable use, ideal for consultants and engineers who wish to manage intersection data and edit the controller database

TACTICS™ Marc

A closed-loop for field masters using SEMARC controller software that connects masters on the street for uploads/downloads with simple analysis and map displays

TACTICS™ smartGuard

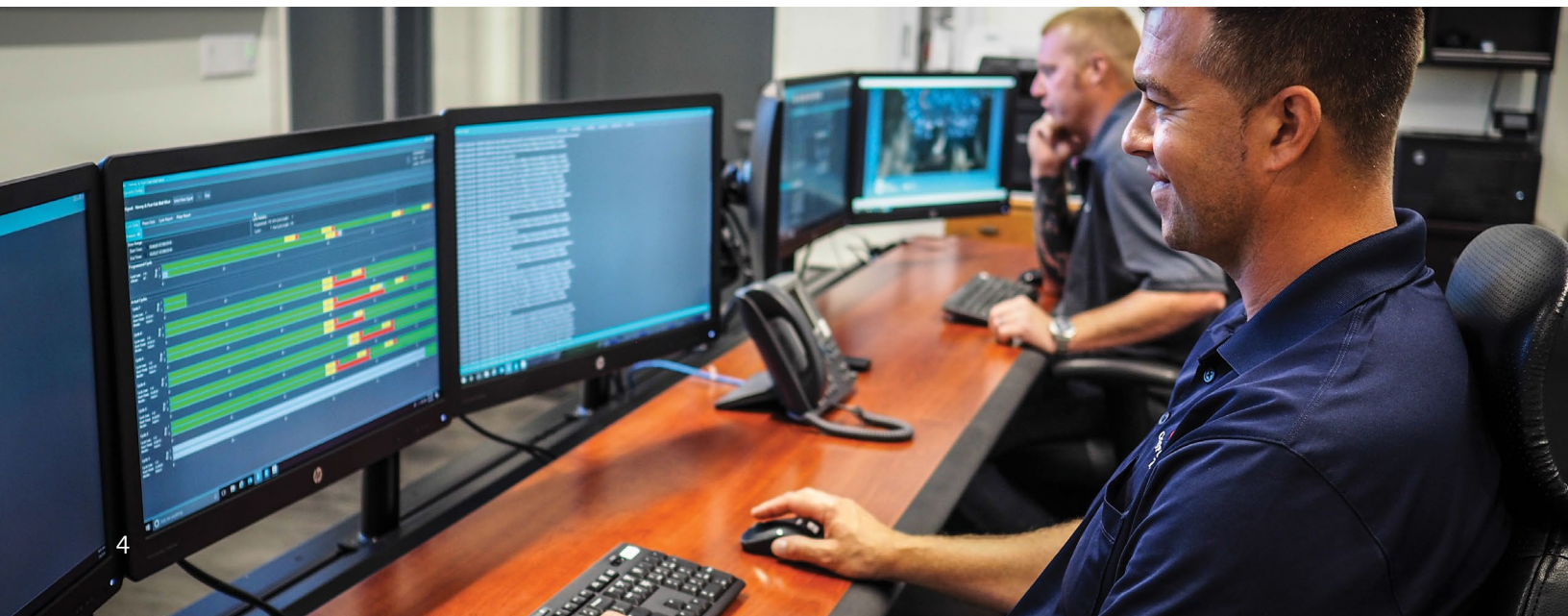
Web-based traffic management solution that allows remote system management from any Internet-connected browser

TACTICS™ Central

Full signal control and traffic management features ideal for smaller cities or areas with a limited number of intersections

TACTICS™ Enterprise

Full signal control and traffic management features plus advanced functionality such as quick response, perfect for larger volumes of traffic equipment



Feature	TACTICS			
	View	Marc	Central	Enterprise
Password-protected access	x	x	x	x
Controller status	x	x	x	x
Controller database upload	x	x	x	x
Controller database download	x	x	x	x
Dial-up connection support	x	x	x	x
Serial connection support	x	x	x	x
IP connection support	x	—	x	x
OSM-based map	x	x	x	x
Selectable themes	x	x	x	x
SEPA ECOM Support	x	x	x	x
SEPA NTCIP Support	x	x	x	x
Configurable logging	x	x	x	x
Communication server	—	x	x	x
Multi-user controller access	—	x	x	x
Permissions control	—	x	x	x
Agency and jurisdictional permissions	—	x	x	x
Dashboard	—	x	x	x
Intersection Status	—	x	x	x
System detector status	—	x	x	x
Active alarm status	—	x	x	x
Port server and client status	—	x	x	x
List and compare database controller to central	—	x	x	x
Parameter history and rollback	—	x	x	x
MARC Master Support	—	x	x	x
Standard and custom reports	—	x	x	x
Synchro support	—	x	x	x
System maps	—	x	x	x
Custom map labels	—	x	x	x
Traffic responsive	—	x	x	x
Time of day	—	x	x	x
Light Rail Transit support	—	x	x	x
Laptop workstation	—	o	x	x
Zone/Group Broadcasts	—	o	x	x
Quick response	—	o	o	x
Quick response status	—	o	o	x
Time-space diagram	—	o	x	x
Split monitoring	—	o	x	x
Serial connection support (including Serial over IP)	—	—	x	x
Logical grouping of controllers independent of signal control	—	—	x	x
Scalability with multiple communication servers	—	—	x	x
Upload/download from a controller to another	—	—	x	x
Virtual ports for 3 rd party applications	—	o	o	o
Second-per-second monitoring	—	—	o	o
Center-to-center	—	—	o	o

Where: x Standard o Optional — Not available

Siemens Mobility, Inc.

9225 Bee Cave Road
Building B, Suite 101
Austin, TX 78733

1.512.837.8300

Subject to change without prior notice

Order No.: TAC-TICS-1219

Printed in USA

© 2019 Siemens Mobility, Inc.

The technical data presented in this document is based on an actual case or on as-designed parameters, and therefore should not be relied upon for any specific application and does not constitute a performance guarantee for any projects. Actual results are dependent on variable conditions. Accordingly, Siemens does not make representations, warranties, or assurances as to the accuracy, currency or completeness of the content contained herein. If requested, we will provide specific technical data or specifications with respect to any customer's particular applications. Our company is constantly involved in engineering and development. For that reason, we reserve the right to modify, at any time, the technology and product specifications contained herein.