

SANCTUS ESSENCE

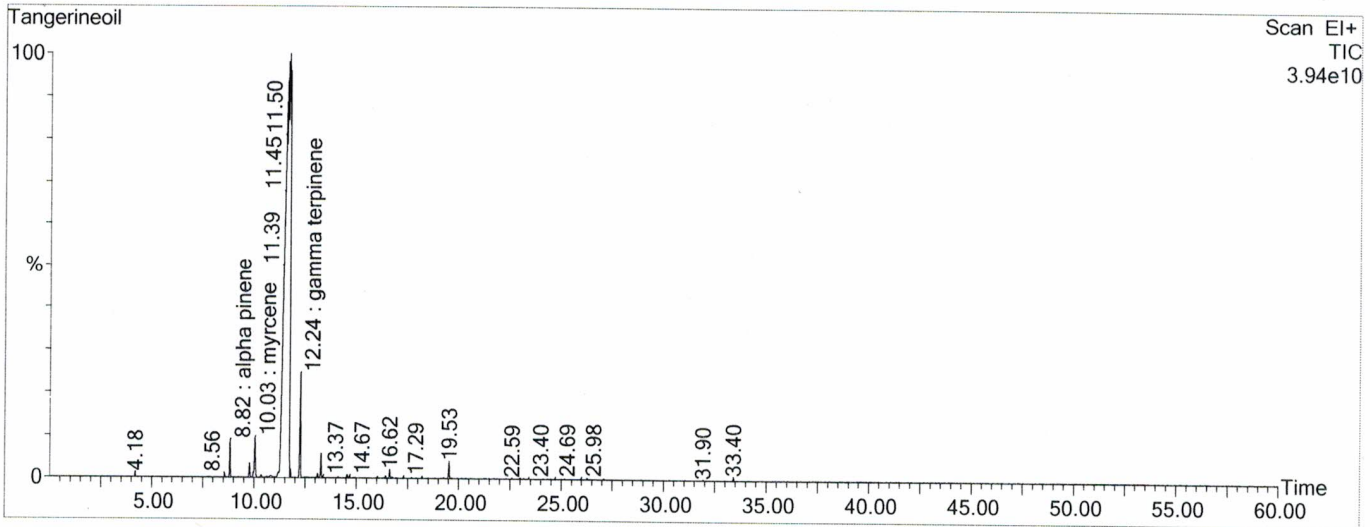
GCMS Analysis Report

File: C:\TURBOMASS\DEFAULT.PRO\Data\Tangerineoil.raw
 Acquired: 04-Nov-19 10:52:39 AM

Printed: 07-Nov-19 04:30 PM

GC/MS Method: GC: LemonMS.mth MS: LemonMS.EXP

Page 1 of 1
 Vial Number: 55



#	RT	Area	Area %	Name
1	8.317	128,816,088.0	1.006	alpha pinene
2	10.032	234,114,000.0	1.828	myrcene
3	11.663	11,330,614,272.0	88.461	limonene
4	12.243	454,206,400.0	3.546	gamma terpinene
5	13.274	94,793,536.0	0.740	linalool

ACQUISITION PARAMETERS

Oven: Initial temp 75°C for 0 min, ramp 4°C/min to 220°C, hold 30 min, InjAauto=250°C, Volume= 1µL, Split=100:1, Carrier Gas=He, Solvent Delay=0.00 min, Transfer Temp=210°C, Source Temp=200°C, Scan: 50 to 300Da, Column 60.0m x 250µm Elite-5 Column

Percentages are only indicative of relative peak ratios on the chromatogram and not of their concentration in the sample. Products may contain non-volatile materials. Furthermore, GCMS response factors vary more than for responses measured in GCFID and ratios comparisons should be considered carefully.