

SANCTUS ESSENCE

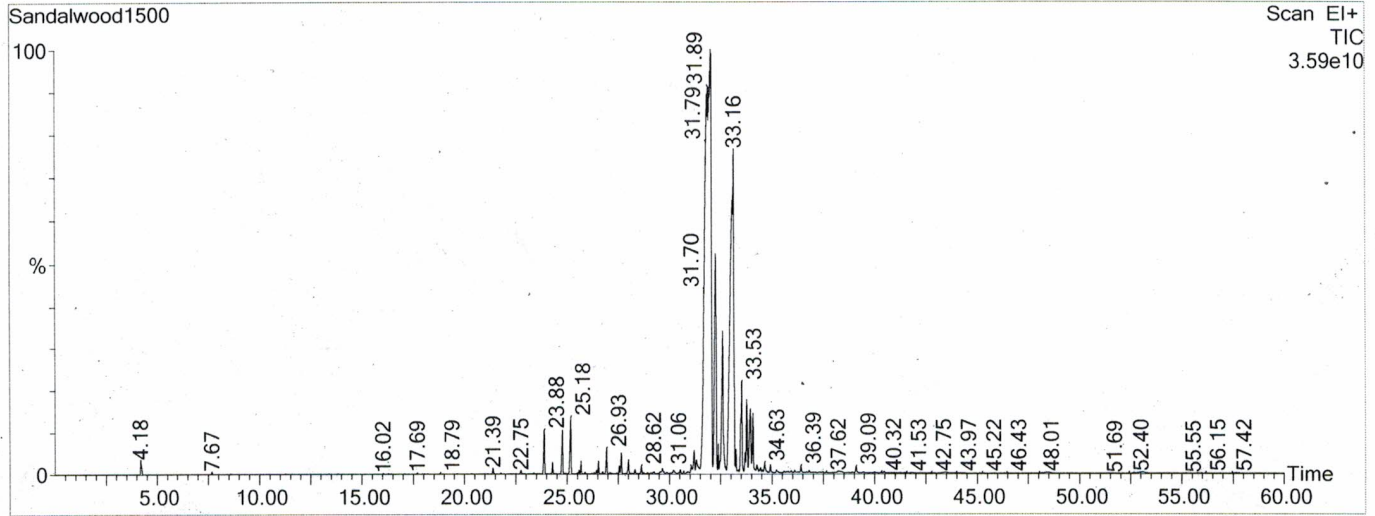
GCMS Analysis Report

File: C:\TURBOMASS\DEFAULT.PRO\Data\Sandalwood1500.raw
 Acquired: 09-Sep-19 11:38:33 AM

Printed: 09-Oct-19 09:26 AM

GC/MS Method: GC: LemonMS.mth MS: LemonMS.EXP

Page 1 of 1
 Vial Number: 73



#	RT	Area	Area %	Name
1	32.041	11,238,441,984.0	48.964	alpha beta Santalol
2	32.256	1,657,802,752.0	7.223	cis lanceol
3	32.606	1,051,653,824.0	4.582	b santalene
4	33.162	4,864,099,840.0	21.192	nuciferol
5	33.527	552,769,792.0	2.408	santalene

ACQUISITION PARAMETERS

Oven: Initial temp 75°C for 0 min, ramp 4°C/min to 220°C, hold 30 min, InjAauto=250°C, Volume= 1µL, Split=100:1, Carrier Gas=He, Solvent Delay=0.00 min, Transfer Temp=210°C, Source Temp=200°C, Scan: 50 to 300Da, Column 60.0m x 250µm Elite-5 Column

Percentages are only indicative of relative peak ratios on the chromatogram and not of their concentration in the sample. Products may contain non-volatile materials. Furthermore, GCMS response factors vary more than for responses measured in GCFID and ratios comparisons should be considered carefully.