

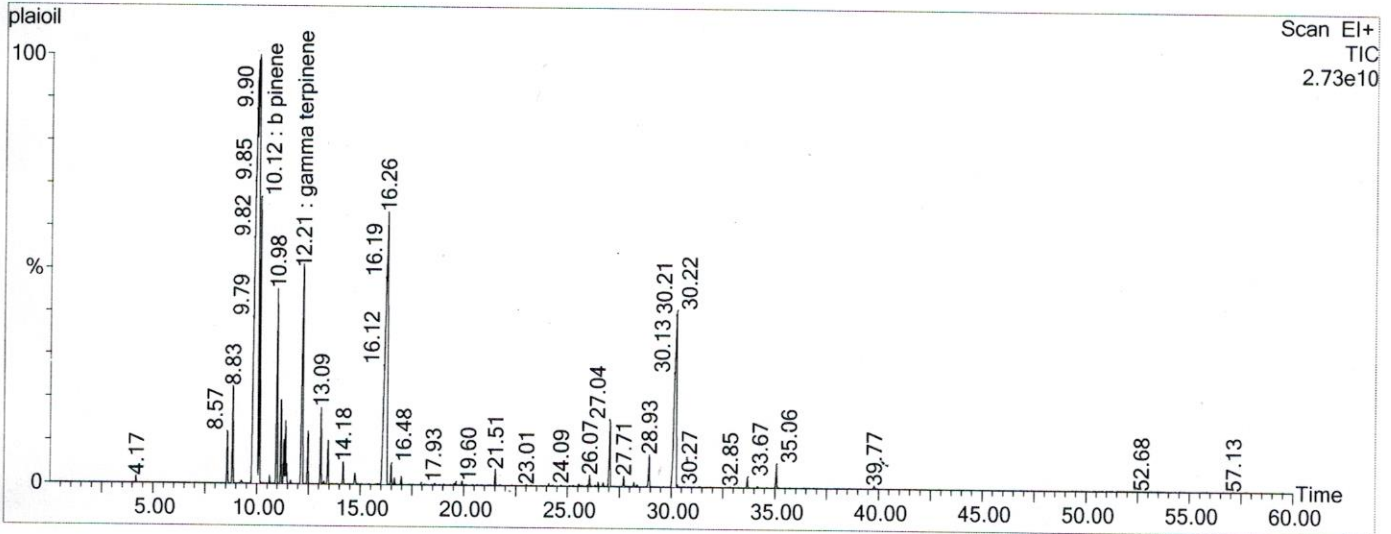
SANCTUS ESSENCE

GCMS Analysis Report

File: C:\TURBOMASS\DEFAULT.PRO\Data\plaioil.raw
 Acquired: 15-Nov-19 01:16:51 PM
 GC/MS Method: GC: LemonMS.mth MS: LemonMS.EXP

Printed: 20-Nov-19 02:55 PM

Page 1 of 1
 Vial Number: 97



#	RT	Area	Area %	Name
1	10.027	5,258,762,752.0	39.442	alpha pinene
2	10.117	674,752,832.0	5.061	b pinene
3	12.208	928,192,832.0	6.962	gamma terpinene
4	16.265	2,283,086,848.0	17.124	terpinene-4-ol
5	30.220	1,220,858,752.0	9.157	triquinacene

ACQUISITION PARAMETERS

Oven: Initial temp 75°C for 0 min, ramp 4°C/min to 220°C, hold 30 min, InjAauto=250°C, Volume= 1µL, Split=100:1, Carrier Gas=He, Solvent Delay=0.00 min, Transfer Temp=210°C, Source Temp=200°C, Scan: 50 to 300Da, Column 60.0m x 250µm Elite-5 Column

Percentages are only indicative of relative peak ratios on the chromatogram and not of their concentration in the sample. Products may contain non-volatile materials. Furthermore, GCMS response factors vary more than for responses measured in GC/FID and ratios comparisons should be considered carefully.