

SANCTUS ESSENCE

GCMS Analysis Report

File: C:\TURBOMASS\DEFAULT.PRO\Data\PetitgrainPETO0118AA.raw

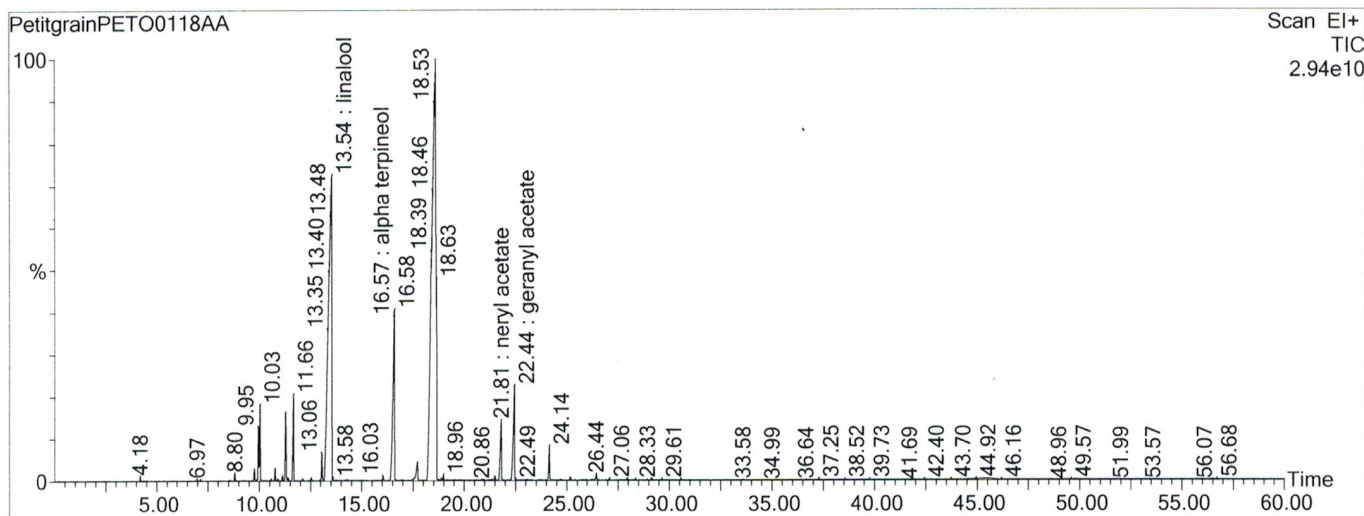
Acquired: 09-Sep-19 12:51:18 PM

Printed: 27-Sep-19 03:22 PM

GC/MS Method: GC: LemonMS.mth MS: LemonMS.EXP

Page 1 of 1

Vial Number: 74



#	RT	Area	Area %	Name
1	13.539	3,867,941,632.0	26.750	linalool
2	16.585	1,099,003,520.0	7.601	alpha terpineol
3	18.606	6,998,821,376.0	48.403	linalyl acetate
4	21.807	279,400,768.0	1.932	neryl acetate
5	22.442	498,034,432.0	3.444	geranyl acetate

ACQUISITION PARAMETERS

Oven: Initial temp 75°C for 0 min, ramp 4°C/min to 220°C, hold 30 min, InjAauto=250°C, Volume= 1µL, Split=100:1, Carrier Gas=He, Solvent Delay=0.00 min, Transfer Temp=210°C, Source Temp=200°C, Scan: 50 to 300Da, Column 60.0m x 250µm Elite-5 Column

Percentages are only indicative of relative peak ratios on the chromatogram and not of their concentration in the sample. Products may contain non-volatile materials. Furthermore, GCMS response factors vary more than for responses measured in GCFID and ratios comparisons should be considered carefully.