

SANCTUS ESSENCE

GCMS Analysis Report

File: C:\TURBOMASS\DEFAULT.PRO\Data\OrgRosalinaJF20573.raw

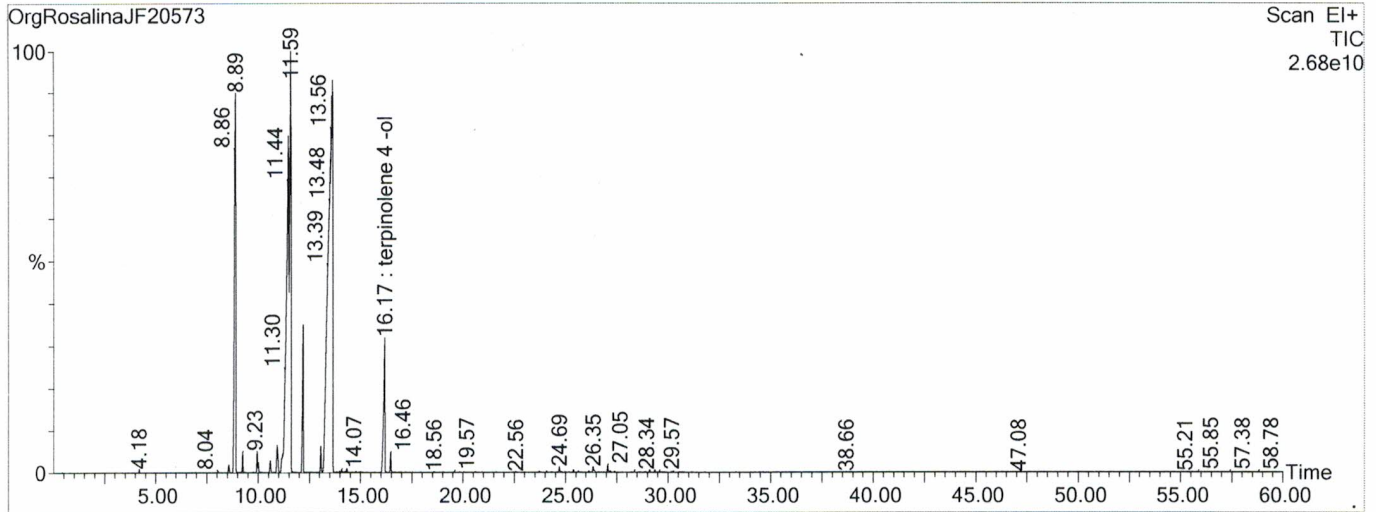
Acquired: 09-Sep-19 11:44:40 PM

Printed: 08-Oct-19 03:13 PM

GC/MS Method: GC: LemonMS.mth MS: LemonMS.EXP

Page 1 of 1

Vial Number: 83



#	RT	Area	Area %	Name
1	8.892	1,919,619,712.0	13.203	terpinolene
2	11.473	2,720,808,960.0	18.713	limonene
3	11.593	2,037,996,928.0	14.017	1,8 cineole
4	13.639	5,969,452,032.0	41.056	linalool
5	16.175	614,212,032.0	4.224	terpinolene 4 -ol

ACQUISITION PARAMETERS

Oven: Initial temp 75°C for 0 min, ramp 4°C/min to 220°C, hold 30 min, InjAuto=250°C, Volume= 1µL, Split=100:1, Carrier Gas=He, Solvent Delay=0.00 min, Transfer Temp=210°C, Source Temp=200°C, Scan: 50 to 300Da, Column 60.0m x 250µm Elite-5 Column

Percentages are only indicative of relative peak ratios on the chromatogram and not of their concentration in the sample.

Products may contain non-volatile materials. Furthermore, GCMS response factors vary more than for responses measured in GCFID and ratios comparisons should be considered carefully.