

SANCTUS ESSENCE

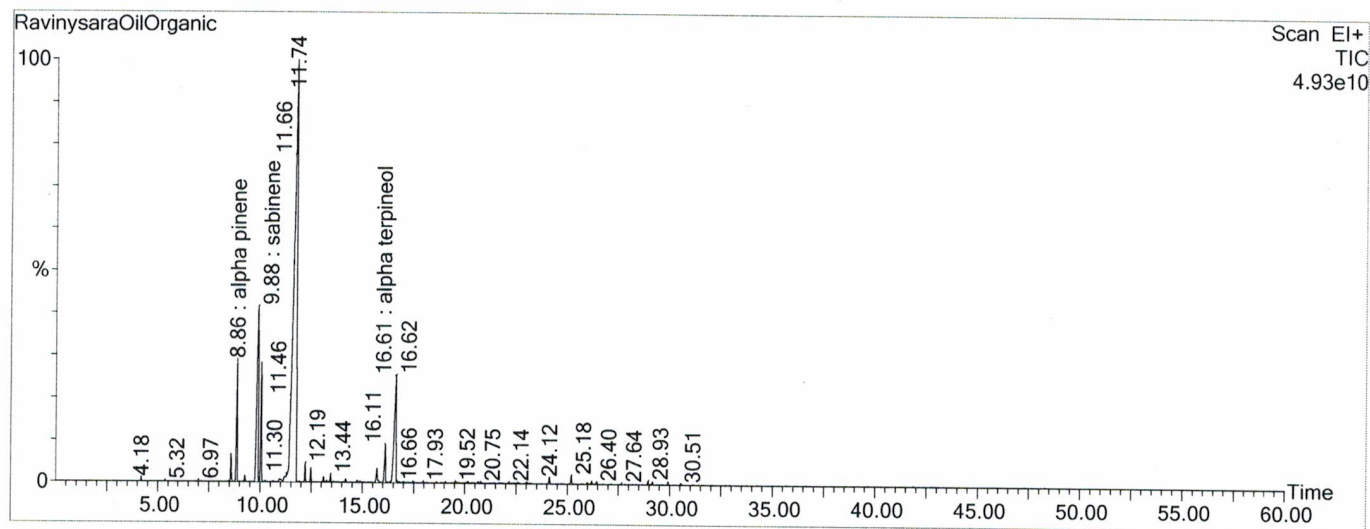
GCMS Analysis Report

File: C:\TURBOMASS\DEFAULT.PRO\Data\RavinysaraOilOrganic.raw
 Acquired: 04-Nov-19 12:04:58 PM

Printed: 07-Nov-19 04:28 PM

GC/MS Method: GC: LemonMS.mth MS: LemonMS.EXP

Page 1 of 1
 Vial Number: 56



#	RT	Area	Area %	Name
1	8.862	691,357,504.0	4.908	alpha pinene
2	9.877	1,729,932,928.0	12.281	b pinene
3	10.038	667,656,576.0	4.740	b mycene
4	11.738	8,269,958,656.0	58.710	limonene
5	16.620	1,329,364,096.0	9.437	alpha terpineol

ACQUISITION PARAMETERS

Oven: Initial temp 75°C for 0 min, ramp 4°C/min to 220°C, hold 30 min, InjAauto=250°C, Volume= 1µL, Split=100:1, Carrier Gas=He, Solvent Delay=0.00 min, Transfer Temp=210°C, Source Temp=200°C, Scan: 50 to 300Da, Column 60.0m x 250µm Elite-5 Column

Percentages are only indicative of relative peak ratios on the chromatogram and not of their concentration in the sample. Products may contain non-volatile materials. Furthermore, GCMS response factors vary more than for responses measured in GCFID and ratios comparisons should be considered carefully.