

# SANCTUS ESSENCE

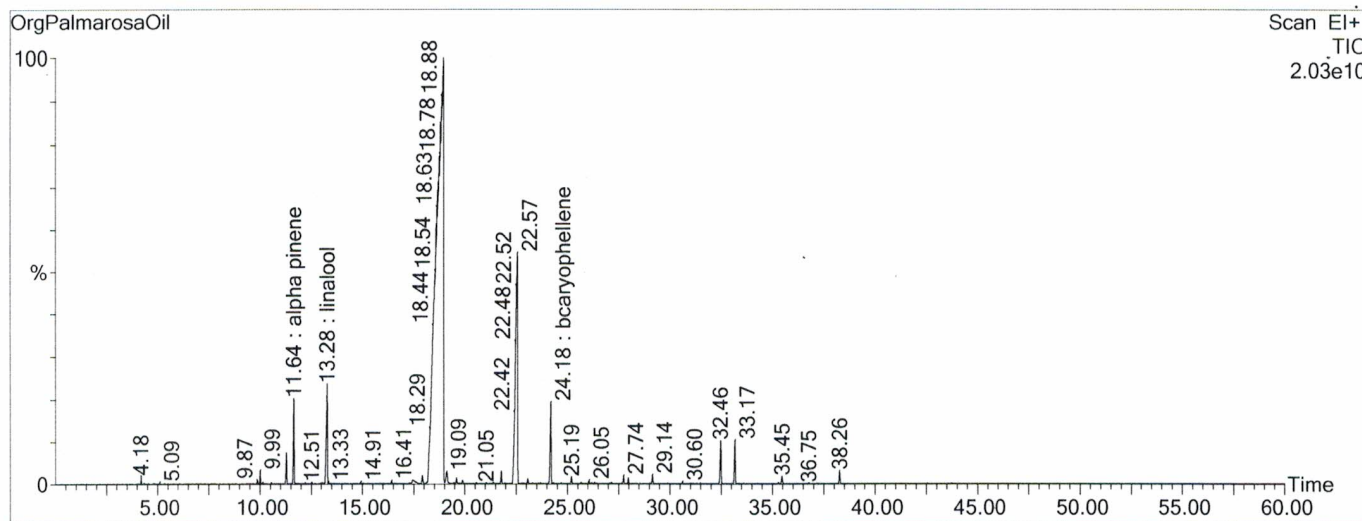
## GCMS Analysis Report

File: C:\TURBOMASS\DEFAULT.PRO\Data\OrgPalmarosaOil.raw  
 Acquired: 10-Sep-19 12:57:08 AM

Printed: 20-Sep-19 04:16 PM

GC/MS Method: GC: LemonMS.mth MS: LemonMS.EXP

Page 1 of 1  
 Vial Number: 84



#	RT	Area	Area %	Name
1	11.643	189,593,568.0	1.702	alpha pinene
2	13.284	284,265,760.0	2.551	linalool
3	18.951	8,210,588,160.0	73.686	geraniol
4	22.567	1,348,771,072.0	12.105	geranyl acetate
5	24.183	216,635,120.0	1.944	bcaryophellene

### ACQUISITION PARAMETERS

Oven: Initial temp 75°C for 0 min, ramp 4°C/min to 220°C, hold 30 min, InjAauto=250°C, Volume= 1µL, Split=100:1, Carrier Gas=He, Solvent Delay=0.00 min, Transfer Temp=210°C, Source Temp=200°C, Scan: 50 to 300Da, Column 60.0m x 250µm Elite-5 Column

Percentages are only indicative of relative peak ratios on the chromatogram and not of their concentration in the sample. Products may contain non-volatile materials. Furthermore, GCMS response factors vary more than for responses measured in GCFID and ratios comparisons should be considered carefully.