

SANCTUS ESSENCE

GCMS Analysis Report

File: C:\TURBOMASS\DEFAULT.PRO\Data\OrgOreganoOilJF20480.raw

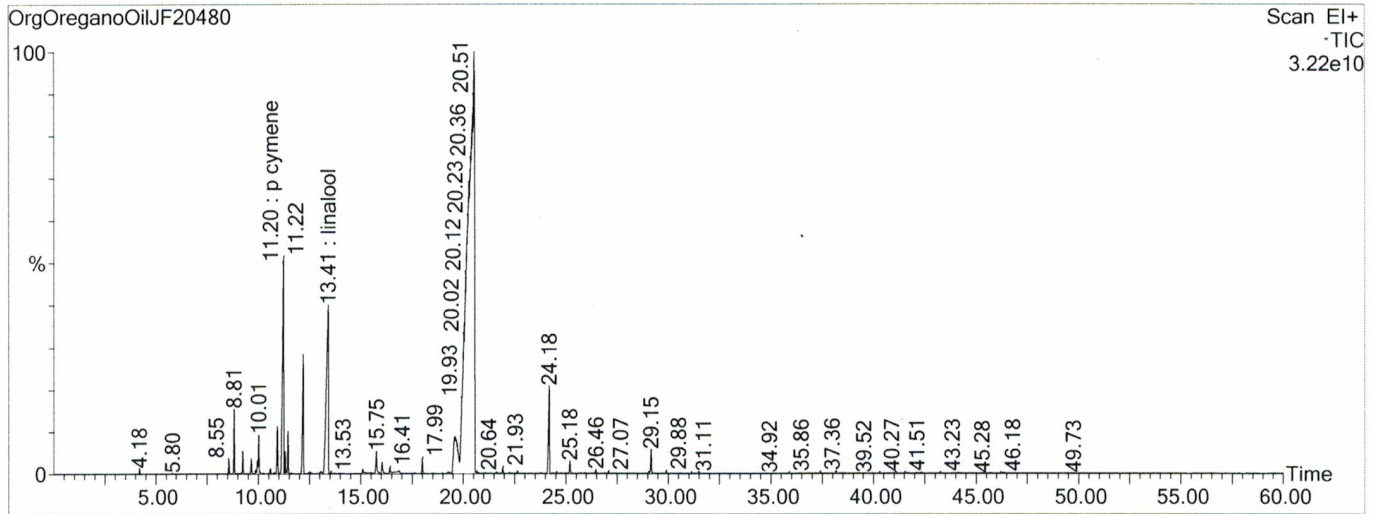
Acquired: 09-Sep-19 10:32:11 PM

Printed: 08-Oct-19 03:05 PM

GC/MS Method: GC: LemonMS.mth MS: LemonMS.EXP

Page 1 of 1

Vial Number: 82



#	RT	Area	Area %	Name
1	11.218	1,153,785,856.0	6.254	p cymene
2	12.173	508,885,664.0	2.758	gamma terpinene
3	13.409	1,420,316,288.0	7.699	linalool
4	19.586	672,353,920.0	3.645	thymol
5	20.551	12,510,425,088.0	67.813	carvacrol

ACQUISITION PARAMETERS

Oven: Initial temp 75°C for 0 min, ramp 4°C/min to 220°C, hold 30 min, InjAauto=250°C, Volume= 1µL, Split=100:1, Carrier Gas=He, Solvent Delay=0.00 min, Transfer Temp=210°C, Source Temp=200°C, Scan: 50 to 300Da, Column 60.0m x 250µm Elite-5 Column

Percentages are only indicative of relative peak ratios on the chromatogram and not of their concentration in the sample.

Products may contain non-volatile materials. Furthermore, GCMS response factors vary more than for responses measured in GCFID and ratios comparisons should be considered carefully.