

SANCTUS ESSENCE

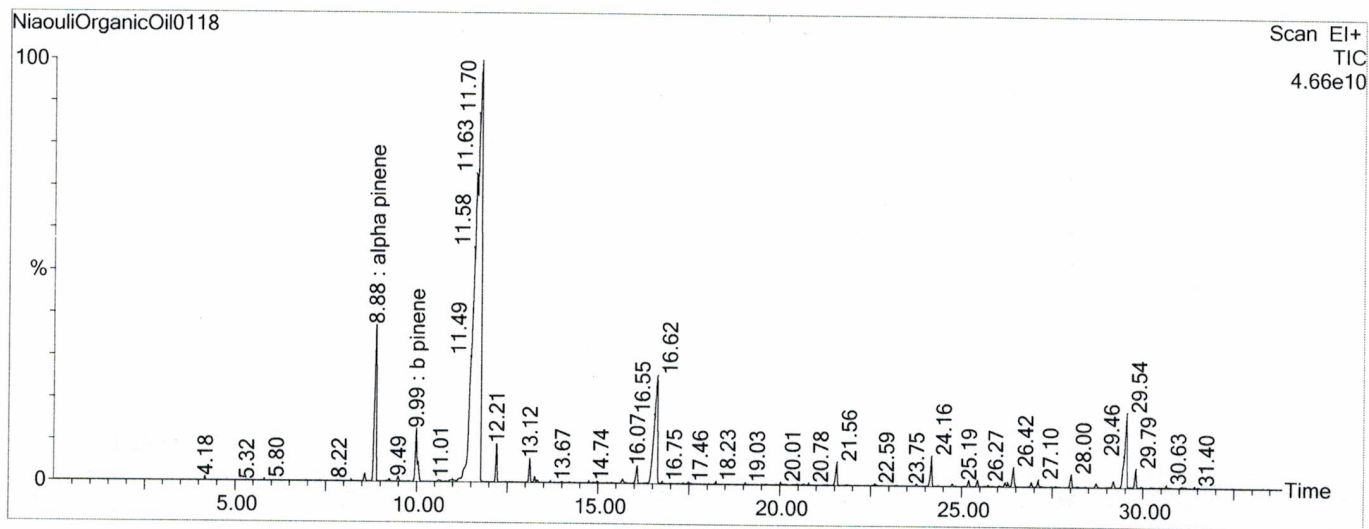
GCMS Analysis Report

File: C:\TURBOMASS\DEFAULT.PRO\Data\NiaouliOrganicOil0118.raw
 Acquired: 04-Nov-19 02:29:44 PM

Printed: 07-Nov-19 04:37 PM

GC/MS Method: GC: LemonMS.mth MS: LemonMS.EXP

Page 1 of 1
 Vial Number: 58



#	RT	Area	Area %	Name
1	8.882	1,021,878,272.0	7.338	alpha pinene
2	9.987	383,287,648.0	2.752	b pinene
3	11.763	9,045,956,608.0	64.961	18cineolelimonene
4	16.620	1,300,520,832.0	9.339	alpatherpineol
5	29.535	618,259,520.0	4.440	viridfloral

ACQUISITION PARAMETERS

Oven: Initial temp 75°C for 0 min, ramp 4°C/min to 220°C, hold 30 min, InjAauto=250°C, Volume= 1µL, Split=100:1, Carrier Gas=He, Solvent Delay=0.00 min, Transfer Temp=210°C, Source Temp=200°C, Scan: 50 to 300Da, Column 60.0m x 250µm Elite-5 Column

Percentages are only indicative of relative peak ratios on the chromatogram and not of their concentration in the sample. Products may contain non-volatile materials. Furthermore, GCMS response factors vary more than for responses measured in GCFID and ratios comparisons should be considered carefully.