

SANCTUS ESSENCE

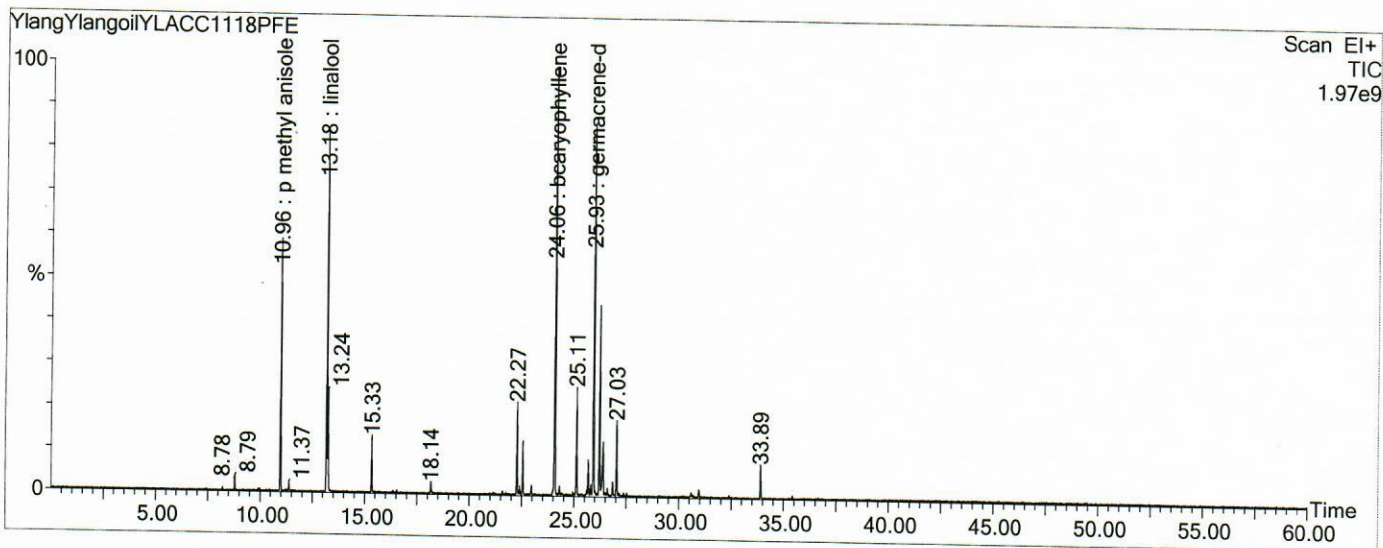
GCMS Analysis Report

File: C:\TURBOMASS\DEFAULT.PRO\Data\YlangYlangoilYLACC1118PFE.raw
 Acquired: 14-Feb-19 01:03:17 AM

Printed: 03-Apr-19 04:16 PM

GC/MS Method: GC: LemonMS.mth MS: LemonMS.EXP

Page 1 of 1
 Vial Number: 40



#	RT	Area	Area %	Name
1	10.968	42,513,776.0	7.776	p methyl anisole
2	13.179	59,802,896.0	10.938	linalool
3	24.063	86,022,616.0	15.734	bcaryophyllene
4	25.929	75,790,376.0	13.863	germacrene-d
5	26.219	32,700,788.0	5.981	famesene

ACQUISITION PARAMETERS

Oven: Initial temp 75°C for 0 min, ramp 4°C/min to 220°C, hold 30 min, InjAauto=250°C, Volume= 1µL, Split=100:1, Carrier Gas=He, Solvent Delay=0.00 min, Transfer Temp=210°C, Source Temp=200°C, Scan: 50 to 300Da, Column 60.0m x 250µm Elite-5 Column

Percentages are only indicative of relative peak ratios on the chromatogram and not of their concentration in the sample. Products may contain non-volatile materials. Furthermore, GCMS response factors vary more than for responses measured in GCFID and ratios comparisons should be considered carefully.