

# SANCTUS ESSENCE

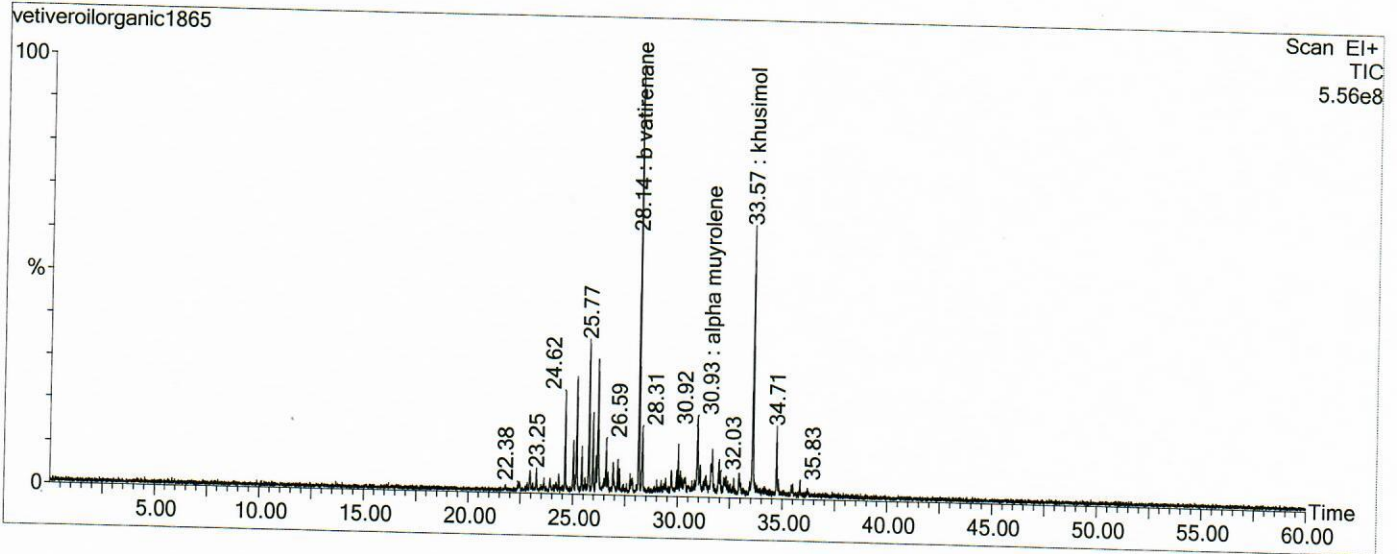
## GCMS Analysis Report

File: C:\TURBOMASS\DEFAULT.PRO\Data\vetiveroilorganic1865.raw  
Acquired: 04-Feb-19 10:25:19 AM

Printed: 03-Apr-19 04:10 PM

GC/MS Method: GC: LemonMS.mth MS: LemonMS.EXP

Page 1 of 1  
Vial Number: 24



#	RT	Area	Area %	Name
1	25.163	6,982,312.0	2.750	khusene
2	25.768	8,443,333.0	3.325	isosativene
3	26.183	7,959,117.0	3.134	b vetispirene
4	28.144	23,116,976.0	9.104	b vatirenane
5	33.571	17,578,036.0	6.922	khusimol

### ACQUISITION PARAMETERS

Oven: Initial temp 75°C for 0 min, ramp 4°C/min to 220°C, hold 30 min, InjAauto=250°C, Volume= 1µL, Split=100:1, Carrier Gas=He, Solvent Delay=0.00 min, Transfer Temp=210°C, Source Temp=200°C, Scan: 50 to 300Da, Column 60.0m x 250µm Elite-5 Column

Percentages are only indicative of relative peak ratios on the chromatogram and not of their concentration in the sample. Products may contain non-volatile materials. Furthermore, GCMS response factors vary more than for responses measured in GCFID and ratios comparisons should be considered carefully.