

SANCTUS ESSENCE

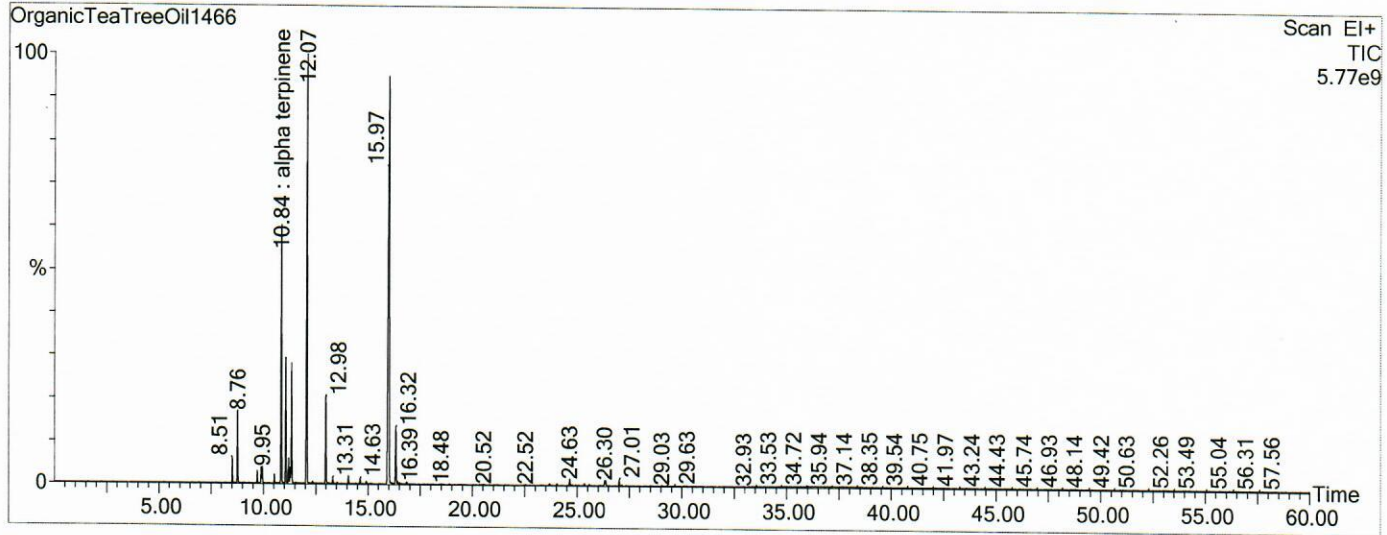
GCMS Analysis Report

File: C:\TURBOMASS\DEFAULT.PRO\Data\OrganicTeaTreeOil1466.raw
 Acquired: 22-Mar-19 12:09:38 PM

Printed: 04-Apr-19 10:54 AM

GC/MS Method: GC: LemonMS.mth MS: LemonMS.EXP

Page 1 of 1
 Vial Number: 1



#	RT	Area	Area %	Name
1	10.853	131,749,560.0	10.705	alpha terpinene
2	11.063	58,231,316.0	4.732	pcymene
3	11.343	57,832,064.0	4.699	eucalytol
4	12.073	248,356,992.0	20.180	gamma terpinene
5	16.000	372,473,120.0	30.265	terpinen-4 ol

ACQUISITION PARAMETERS

Oven: Initial temp 75°C for 0 min, ramp 4°C/min to 220°C, hold 30 min, InjAauto=250°C, Volume= 1µL, Split=100:1, Carrier Gas=He, Solvent Delay=0.00 min, Transfer Temp=210°C, Source Temp=200°C, Scan: 50 to 300Da, Column 60.0m x 250µm Elite-5 Column

Percentages are only indicative of relative peak ratios on the chromatogram and not of their concentration in the sample. Products may contain non-volatile materials. Furthermore, GCMS response factors vary more than for responses measured in GCFID and ratios comparisons should be considered carefully.