

SANCTUS ESSENCE

GCMS Analysis Report

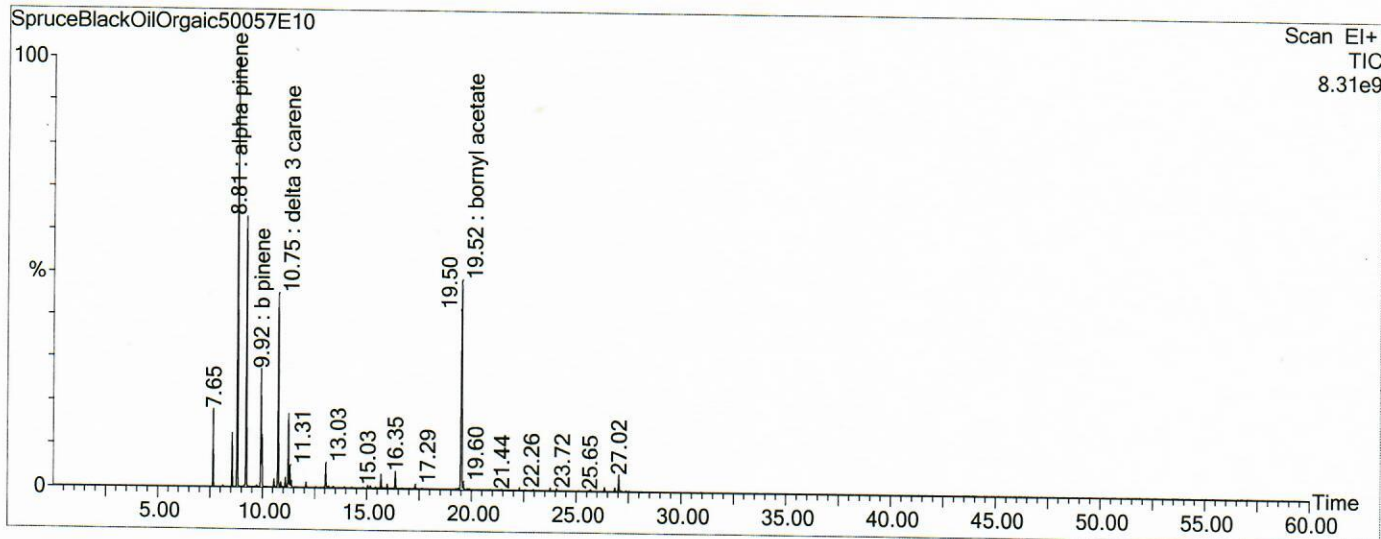
File: C:\TURBOMASS\DEFAULT.PRO\Data\SpruceBlackOilOrgaic50057E10.raw

Acquired: 13-Feb-19 12:59:41 PM

Printed: 03-Apr-19 04:10 PM

GC/MS Method: GC: LemonMS.mth MS: LemonMS.EXP

Page 1 of 1
Vial Number: 8



#	RT	Area	Area %	Name
1	8.807	309,239,360.0	22.841	alpha pinene
2	9.227	203,610,704.0	15.039	camphene
3	9.922	77,344,096.0	5.713	b pinene
4	10.753	143,522,864.0	10.601	delta 3 carene
5	19.521	199,884,000.0	14.764	bornyl acetate

ACQUISITION PARAMETERS

Oven: Initial temp 75°C for 0 min, ramp 4°C/min to 220°C, hold 30 min, InjAauto=250°C, Volume= 1µL, Split=100:1, Carrier Gas=He, Solvent Delay=0.00 min, Transfer Temp=210°C, Source Temp=200°C, Scan: 50 to 300Da, Column 60.0m x 250µm Elite-5 Column

Percentages are only indicative of relative peak ratios on the chromatogram and not of their concentration in the sample. Products may contain non-volatile materials. Furthermore, GCMS response factors vary more than for responses measured in GCFID and ratios comparisons should be considered carefully.