

SANCTUS ESSENCE

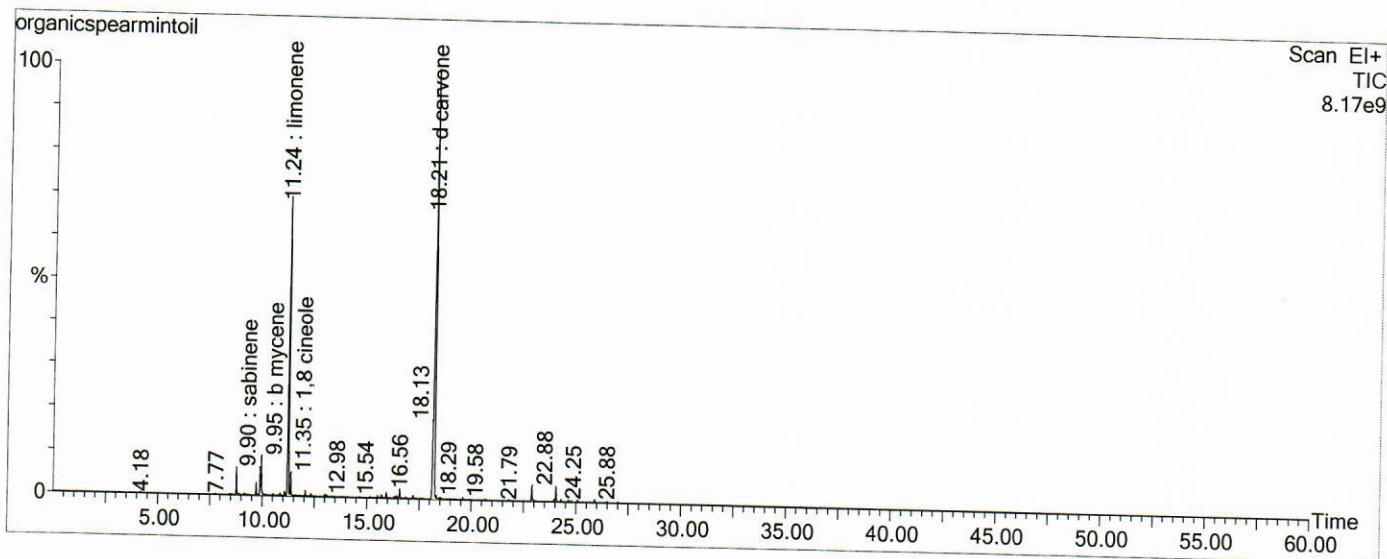
GCMS Analysis Report

File: C:\TURBOMASS\DEFAULT.PRO\Data\organicspearmintoil.raw
 Acquired: 04-Apr-19 11:18:57 AM

Printed: 04-Apr-19 12:33 PM

GC/MS Method: GC: LemonMS.mth MS: LemonMS.EXP

Page 1 of 1
 Vial Number: 25



#	RT	Area	Area %	Name
1	8.767	15,003,356.0	1.384	alpha pinene
2	9.897	14,992,909.0	1.383	sabinene
3	9.947	24,949,086.0	2.302	b pinene
4	11.238	271,932,032.0	25.090	limonene
5	11.358	14,357,897.0	1.325	1,8 cineole
6	18.211	527,173,632.0	48.639	d carvone

ACQUISITION PARAMETERS

Oven: Initial temp 75°C for 0 min, ramp 4°C/min to 220°C, hold 30 min, InjAauto=250°C, Volume= 1µL, Split=100:1, Carrier Gas=He, Solvent Delay=0.00 min, Transfer Temp=210°C, Source Temp=200°C, Scan: 50 to 300Da, Column 60.0m x 250µm Elite-5 Column

Percentages are only indicative of relative peak ratios on the chromatogram and not of their concentration in the sample. Products may contain non-volatile materials. Furthermore, GCMS response factors vary more than for responses measured in GCFID and ratios comparisons should be considered carefully.