

SANCTUS ESSENCE

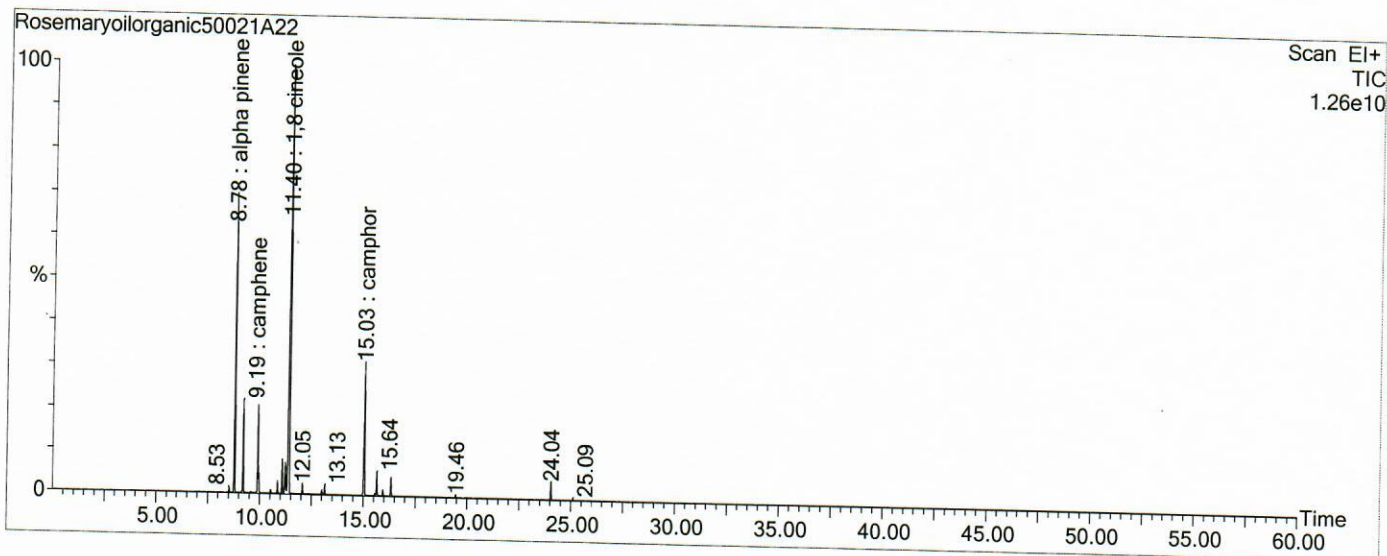
GCMS Analysis Report

File: C:\TURBOMASS\DEFAULT.PRO\Data\Rosemaryoilorganic50021A22.raw
 Acquired: 13-Feb-19 11:47:28 AM

Printed: 03-Apr-19 04:10 PM

GC/MS Method: GC: LemonMS.mth MS: LemonMS.EXP

Page 1 of 1
 Vial Number: 7



#	RT	Area	Area %	Name
1	8.777	301,740,992.0	16.730	alpha pinene
2	9.192	97,425,360.0	5.402	camphene
3	9.902	89,425,856.0	4.958	b pinene
4	11.398	688,034,432.0	38.149	1,8 cineole
5	15.034	179,070,384.0	9.929	camphor

ACQUISITION PARAMETERS

Oven: Initial temp 75°C for 0 min, ramp 4°C/min to 220°C, hold 30 min, InjAauto=250°C, Volume= 1µL, Split=100:1, Carrier Gas=He, Solvent Delay=0.00 min, Transfer Temp=210°C, Source Temp=200°C, Scan: 50 to 300Da, Column 60.0m x 250µm Elite-5 Column

Percentages are only indicative of relative peak ratios on the chromatogram and not of their concentration in the sample. Products may contain non-volatile materials. Furthermore, GCMS response factors vary more than for responses measured in GCFID and ratios comparisons should be considered carefully.