

# SANCTUS ESSENCE

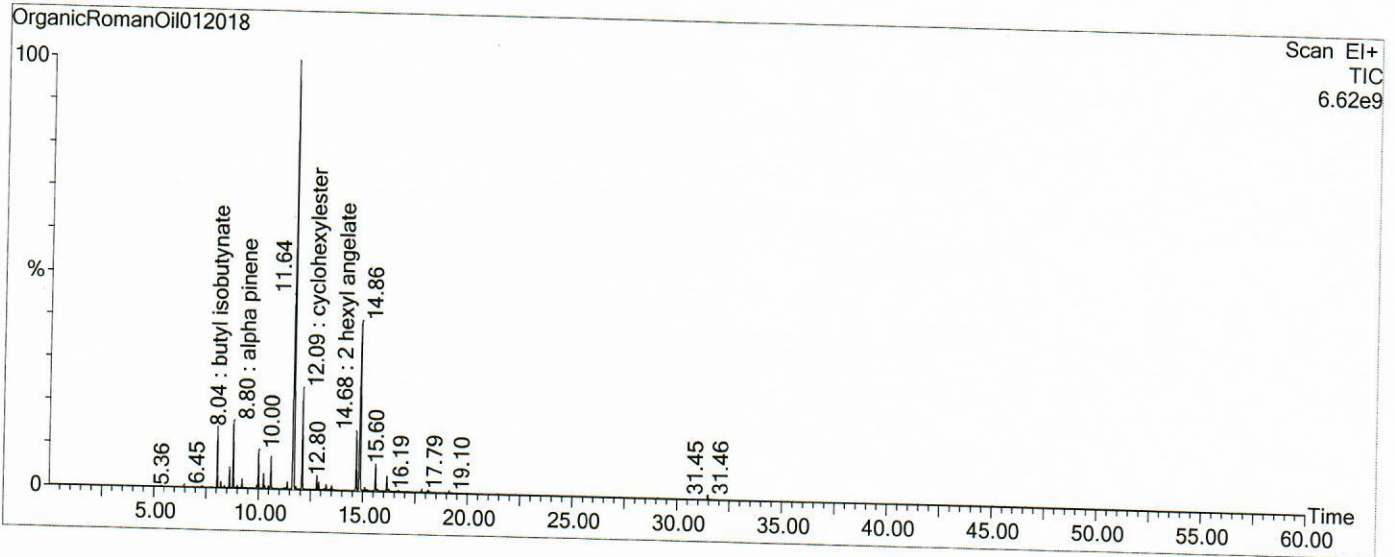
## GCMS Analysis Report

File: C:\TURBOMASS\DEFAULT.PRO\Data\OrganicRomanOil012018.raw  
 Acquired: 26-Mar-19 02:40:58 PM

Printed: 04-Apr-19 10:44 AM

GC/MS Method: GC: LemonMS.mth MS: LemonMS.EXP

Page 1 of 1  
 Vial Number: 6



#	RT	Area	Area %	Name
1	8.042	27,433,752.0	3.257	butyl isobutyrate
2	8.797	34,622,232.0	4.111	alpha pinene
3	11.683	310,372,864.0	36.852	iso butyl angelate
4	12.088	51,833,600.0	6.154	cyclohexylester
5	14.684	35,288,324.0	4.190	2 hexyl angelate
6	14.859	137,204,640.0	16.291	2methylbutylangelate

### ACQUISITION PARAMETERS

Oven: Initial temp 75°C for 0 min, ramp 4°C/min to 220°C, hold 30 min, InjAauto=250°C, Volume= 1µL, Split=100:1, Carrier Gas=He, Solvent Delay=0.00 min, Transfer Temp=210°C, Source Temp=200°C, Scan: 50 to 300Da, Column 60.0m x 250µm Elite-5 Column

Percentages are only indicative of relative peak ratios on the chromatogram and not of their concentration in the sample. Products may contain non-volatile materials. Furthermore, GCMS response factors vary more than for responses measured in GCFID and ratios comparisons should be considered carefully.