

SANCTUS ESSENCE

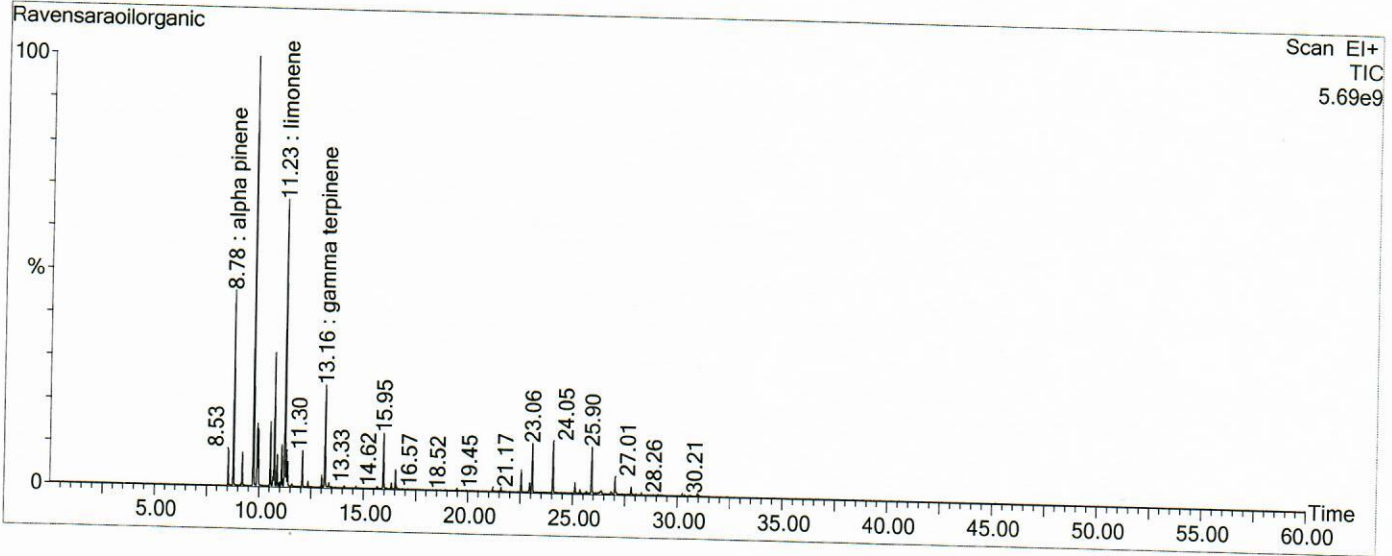
GCMS Analysis Report

File: C:\TURBOMASS\DEFAULT.PRO\Data\Ravensaraoilorganic.raw
 Acquired: 04-Apr-19 12:39:35 PM

Printed: 04-Apr-19 02:42 PM

GC/MS Method: GC: LemonMS.mth MS: LemonMS.EXP

Page 1 of 1
 Vial Number: 26



#	RT	Area	Area %	Name
1	8.782	85,473,792.0	8.096	alpha pinene
2	9.727	201,267,584.0	19.064	sabinene
3	10.728	63,424,664.0	6.008	delta3 carene
4	11.233	143,246,016.0	13.568	limonene
5	13.164	55,608,540.0	5.267	gamma terpinene

ACQUISITION PARAMETERS

Oven: Initial temp 75°C for 0 min, ramp 4°C/min to 220°C, hold 30 min, InjAauto=250°C, Volume= 1µL, Split=100:1, Carrier Gas=He, Solvent Delay=0.00 min, Transfer Temp=210°C, Source Temp=200°C, Scan: 50 to 300Da, Column 60.0m x 250µm Elite-5 Column

Percentages are only indicative of relative peak ratios on the chromatogram and not of their concentration in the sample. Products may contain non-volatile materials. Furthermore, GCMS response factors vary more than for responses measured in GCFID and ratios comparisons should be considered carefully.