

# CHEMTEX USA

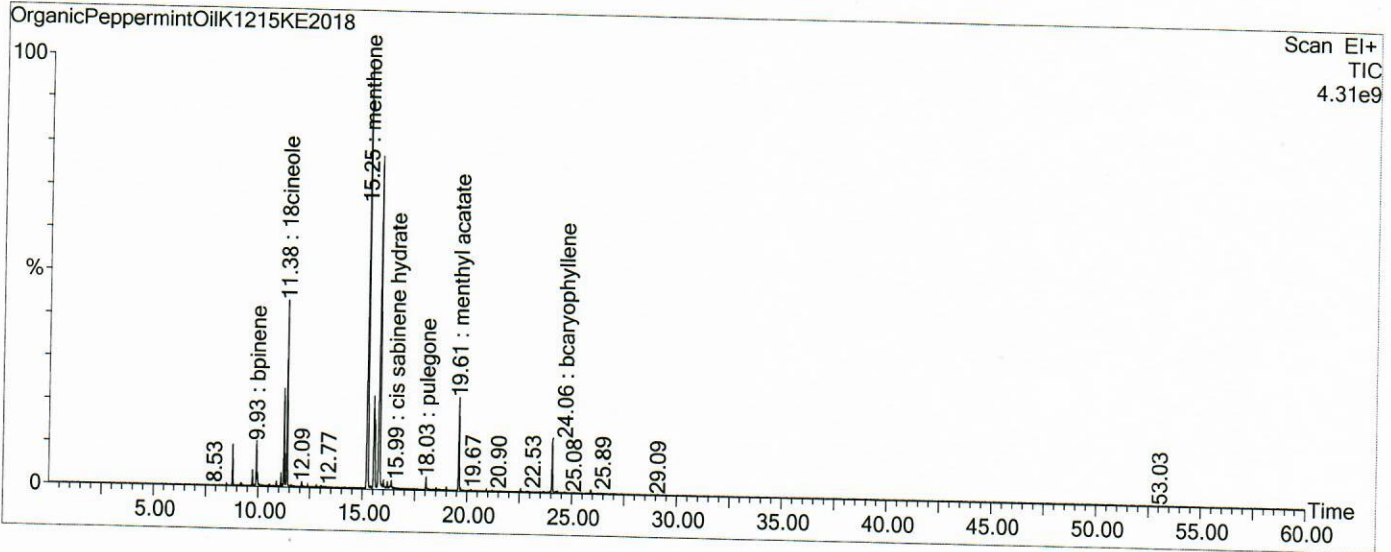
## GCMS Analysis Report

File: C:\TURBOMASS\DEFAULT.PRO\Data\OrganicPeppermintOilK1215KE2018.raw  
 Acquired: 26-Mar-19 06:17:36 PM

Printed: 03-Apr-19 04:23 PM

GC/MS Method: GC: LemonMS.mth MS: LemonMS.EXP

Page 1 of 1  
 Vial Number: 9



#	RT	Area	Area %	Name
1	11.233	36,453,516.0	4.447	limonene
2	11.383	70,005,896.0	8.539	18cineole
3	15.250	217,930,528.0	26.583	menthone
4	15.535	36,189,764.0	4.414	mentofuran
5	15.825	197,186,240.0	24.053	lmenthol
6	19.607	37,801,408.0	4.611	menthyl acetate
7	24.058	22,345,562.0	2.726	bcaryophyllene

### ACQUISITION PARAMETERS

Oven: Initial temp 75°C for 0 min, ramp 4°C/min to 220°C, hold 30 min, InjAauto=250°C, Volume= 1µL, Split=100:1, Carrier Gas=He, Solvent Delay=0.00 min, Transfer Temp=210°C, Source Temp=200°C, Scan: 50 to 300Da, Column 60.0m x 250µm Elite-5 Column

Percentages are only indicative of relative peak ratios on the chromatogram and not of their concentration in the sample. Products may contain non-volatile materials. Furthermore, GCMS response factors vary more than for responses measured in GCFID and ratios comparisons should be considered carefully.