

SANCTUS ESSENCE

GCMS Analysis Report

File: C:\TURBOMASS\DEFAULT.PRO\Data\OrganicPatchouliOilHDOPT180003.raw

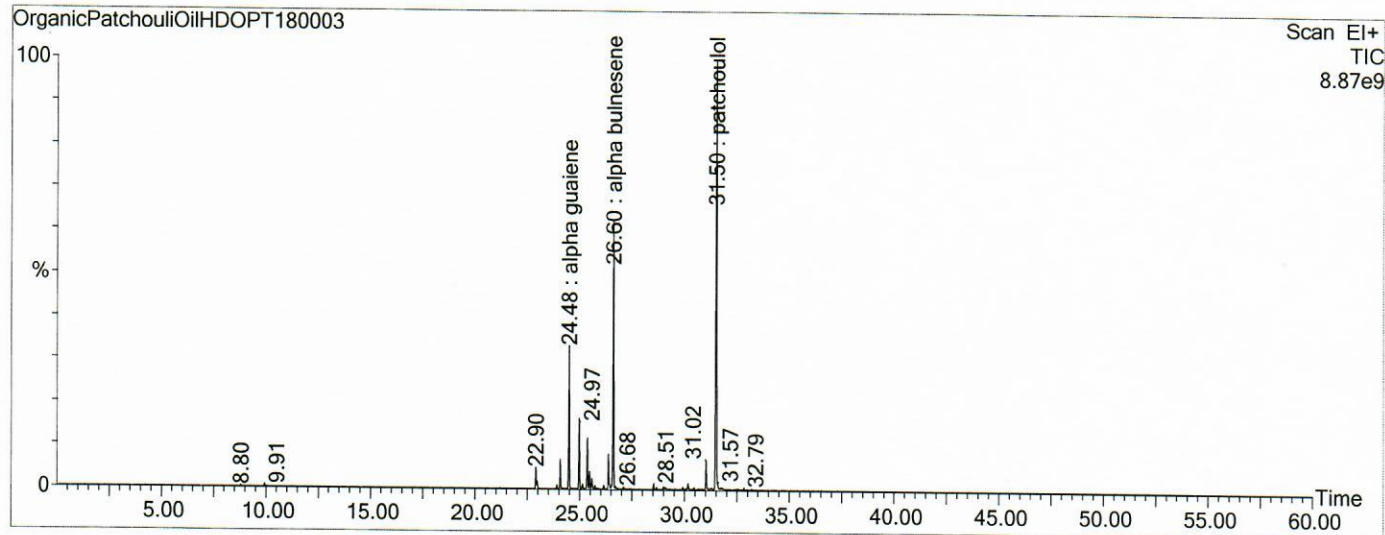
Acquired: 26-Mar-19 01:28:47 PM

Printed: 04-Apr-19 11:19 AM

GC/MS Method: GC: LemonMS.mth MS: LemonMS.EXP

Page 1 of 1

Vial Number: 5



#	RT	Area	Area %	Name
1	24.478	128,536,864.0	10.231	alpha guaiene
2	24.958	63,441,844.0	5.050	aciphyllene
3	25.348	45,580,172.0	3.628	alpha patcholene
4	26.604	244,532,128.0	19.464	alpha bulnesene
5	31.496	467,000,448.0	37.171	patchoulol

ACQUISITION PARAMETERS

Oven: Initial temp 75°C for 0 min, ramp 4°C/min to 220°C, hold 30 min, InjAauto=250°C, Volume= 1µL, Split=100:1, Carrier Gas=He, Solvent Delay=0.00 min, Transfer Temp=210°C, Source Temp=200°C, Scan: 50 to 300Da, Column 60.0m x 250µm Elite-5 Column

Percentages are only indicative of relative peak ratios on the chromatogram and not of their concentration in the sample. Products may contain non-volatile materials. Furthermore, GCMS response factors vary more than for responses measured in GCFID and ratios comparisons should be considered carefully.