

SANCTUS ESSENCE

GCMS Analysis Report

File: C:\TURBOMASS\DEFAULT.PRO\Data\Orangesweetoilorganic50018E20.raw

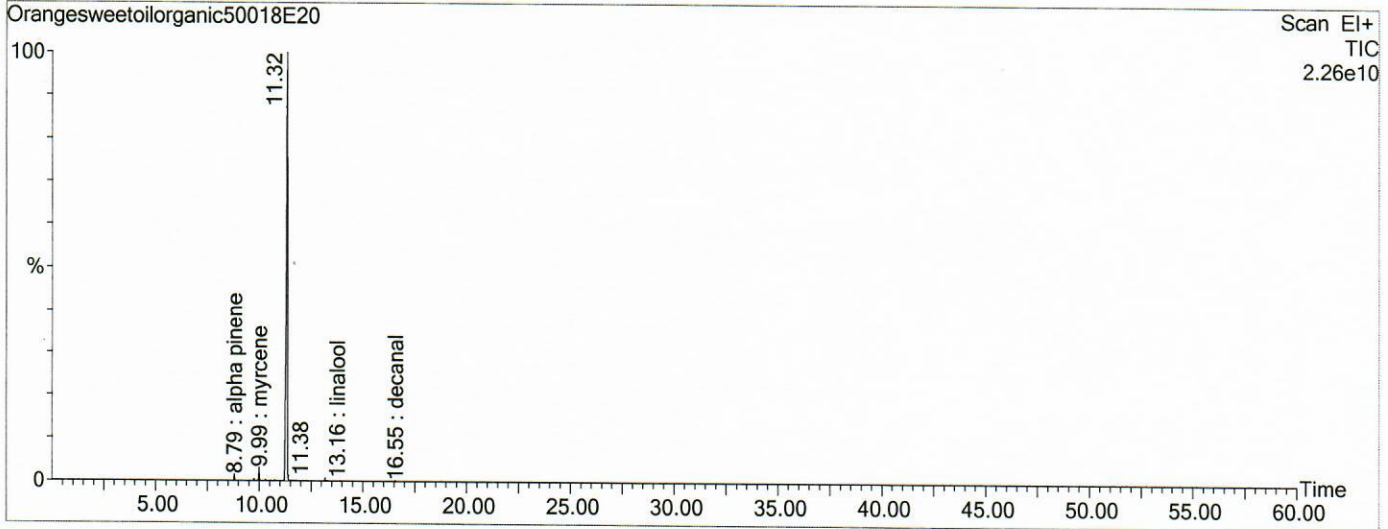
Acquired: 13-Feb-19 07:01:03 PM

Printed: 03-Apr-19 04:12 PM

GC/MS Method: GC: LemonMS.mth MS: LemonMS.EXP

Page 1 of 1

Vial Number: 13



#	RT	Area	Area %	Name
1	8.792	10,140,161.0	0.574	alpha pinene
2	9.732	3,038,431.0	0.172	sabinene
3	9.987	23,892,510.0	1.351	myrcene
4	10.297	1,878,158.0	0.106	octanol
5	10.753	1,089,192.4	0.062	alpha thujene
6	11.343	1,605,160,192.0	90.792	limonene
7	13.164	2,479,541.5	0.140	linalool
8	16.555	1,005,421.4	0.057	decanal

ACQUISITION PARAMETERS

Oven: Initial temp 75°C for 0 min, ramp 4°C/min to 220°C, hold 30 min, InjAauto=250°C, Volume= 1µL, Split=100:1, Carrier Gas=He, Solvent Delay=0.00 min, Transfer Temp=210°C, Source Temp=200°C, Scan: 50 to 300Da, Column 60.0m x 250µm Elite-5 Column

Percentages are only indicative of relative peak ratios on the chromatogram and not of their concentration in the sample. Products may contain non-volatile materials. Furthermore, GCMS response factors vary more than for responses measured in GCFID and ratios comparisons should be considered carefully.