

# SANCTUS ESSENCE

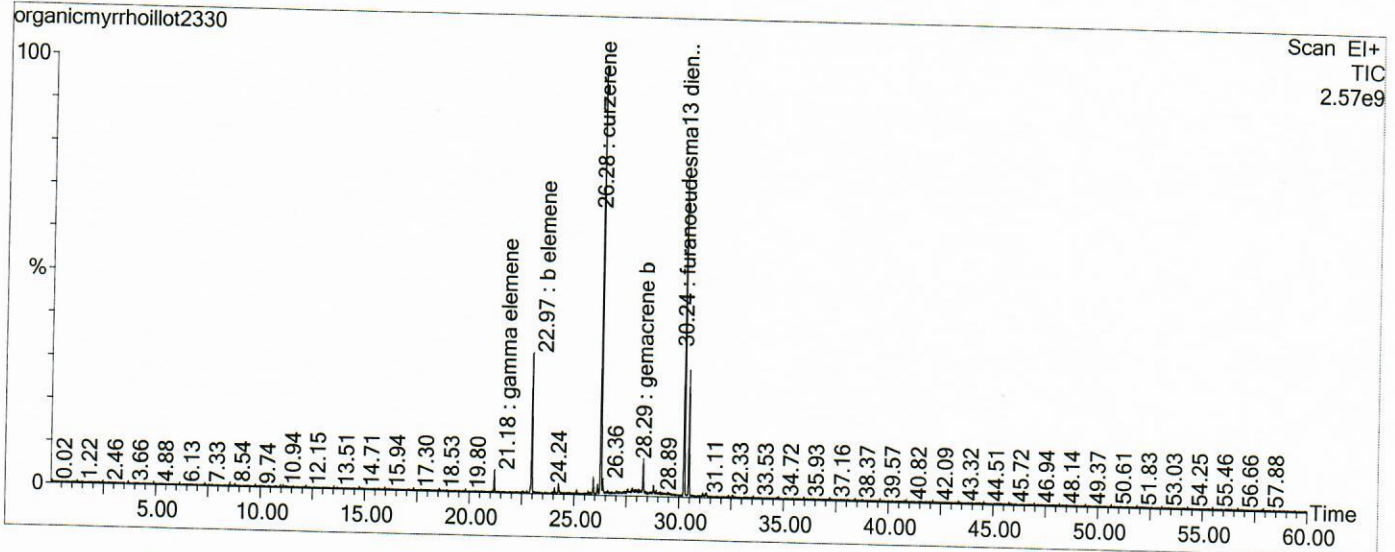
## GCMS Analysis Report

File: C:\TURBOMASS\DEFAULT.PRO\Data\organicmyrrhoillot2330.raw  
 Acquired: 28-Jan-19 11:04:08 AM

Printed: 03-Apr-19 04:09 PM

GC/MS Method: GC: LemonMS.mth MS: LemonMS.EXP

Page 1 of 1  
 Vial Number: 95



#	RT	Area	Area %	Name
1	22.968	35,946,988.0	8.168	b elemene
2	26.279	114,813,064.0	26.087	curzerene
3	28.295	9,861,172.0	2.241	gemacrene b
4	30.236	86,373,360.0	19.625	furanoeudesma13 diene
5	30.461	29,909,164.0	6.796	lindestrene

### ACQUISITION PARAMETERS

Oven: Initial temp 75°C for 0 min, ramp 4°C/min to 220°C, hold 30 min, InjAauto=250°C, Volume= 1µL, Split=100:1, Carrier Gas=He, Solvent Delay=0.00 min, Transfer Temp=210°C, Source Temp=200°C, Scan: 50 to 300Da, Column 60.0m x 250µm Elite-5 Column

Percentages are only indicative of relative peak ratios on the chromatogram and not of their concentration in the sample. Products may contain non-volatile materials. Furthermore, GCMS response factors vary more than for responses measured in GCFID and ratios comparisons should be considered carefully.