

SANCTUS ESSENCE

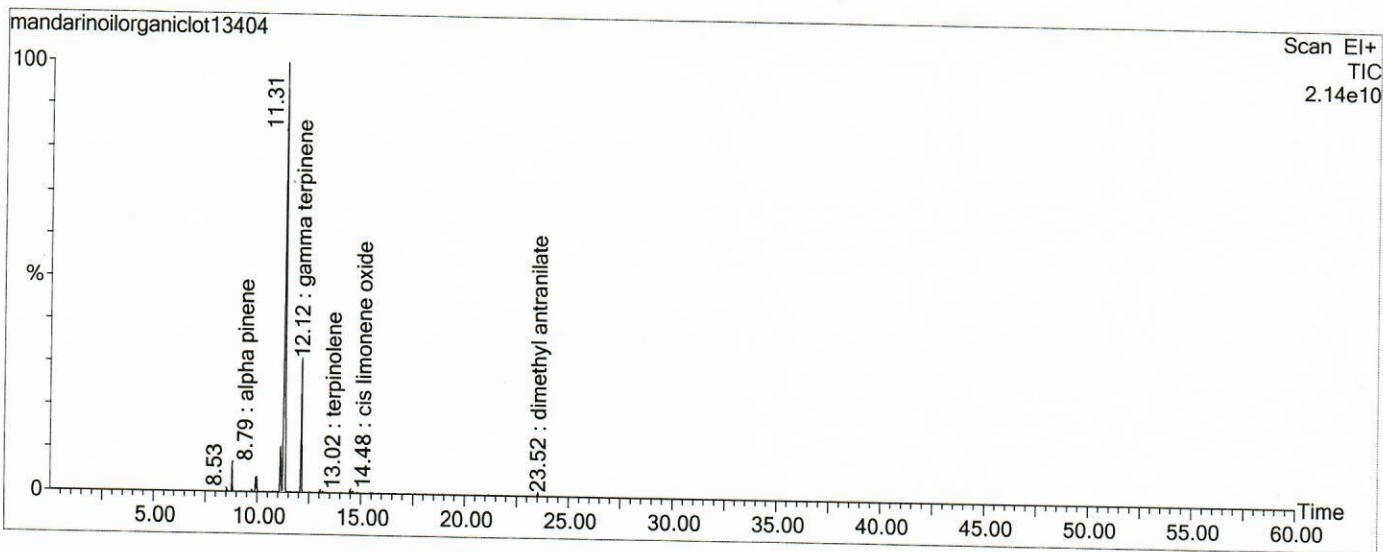
GCMS Analysis Report

File: C:\TURBOMASS\DEFAULT.PRO\Data\mandarinoilorganiclot13404.raw
 Acquired: 18-Dec-18 07:53:38 PM

Printed: 03-Apr-19 03:20 PM

GC/MS Method: GC: LemonMS.mth MS: LemonMS.EXP

Page 1 of 1
 Vial Number: 58



#	RT	Area	Area %	Name
1	8.532	4,315,094.0	0.204	alpathujene
2	8.787	46,396,040.0	2.194	alpha pinene
3	9.922	23,102,196.0	1.092	beta pinene
4	9.977	23,123,330.0	1.093	myrcene
5	11.113	127,444,712.0	6.026	pcymene
6	11.333	1,468,723,200.0	69.450	limonene
7	12.123	276,932,736.0	13.095	gamma terpinene
8	14.479	5,680,324.5	0.269	cis limonene oxide
9	14.604	3,929,490.2	0.186	limonene oxide
10	23.523	7,349,478.5	0.348	dimethyl antranilate

ACQUISITION PARAMETERS

Oven: Initial temp 75°C for 0 min, ramp 4°C/min to 220°C, hold 30 min, InjAauto=250°C, Volume= 1µL, Split=100:1, Carrier Gas=He, Solvent Delay=0.00 min, Transfer Temp=210°C, Source Temp=200°C, Scan: 50 to 300Da, Column 60.0m x 250µm Elite-5 Column

Percentages are only indicative of relative peak ratios on the chromatogram and not of their concentration in the sample. Products may contain non-volatile materials. Furthermore, GCMS response factors vary more than for responses measured in GCFID and ratios comparisons should be considered carefully.